

The CQUIN Learning Network:

Partnering to Advance Differentiated Care

Differentiated Service Delivery: Innovating for Impact

Wafaa El-Sadr, MD, MPH
ICAP at Columbia University

IAS Satellite Meeting, July 23, 2017

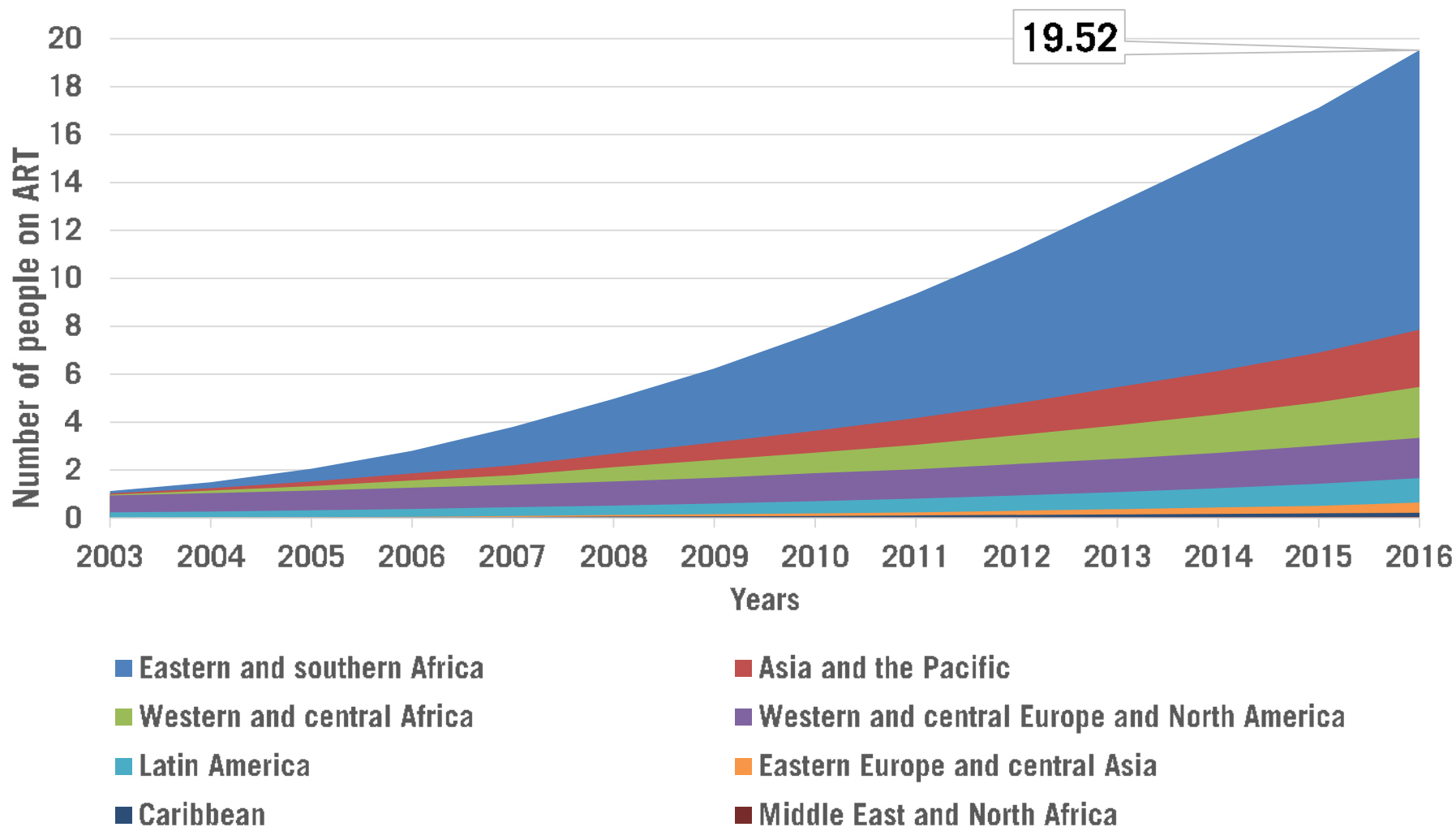


ICAP

GLOBAL. HEALTH. ACTION.

Columbia University
Mailman School of Public Health

Global Scale-up of HIV Treatment



HIV Treatment-- Global Targets By 2020

90%

**of all PLWH will
know their HIV
status**

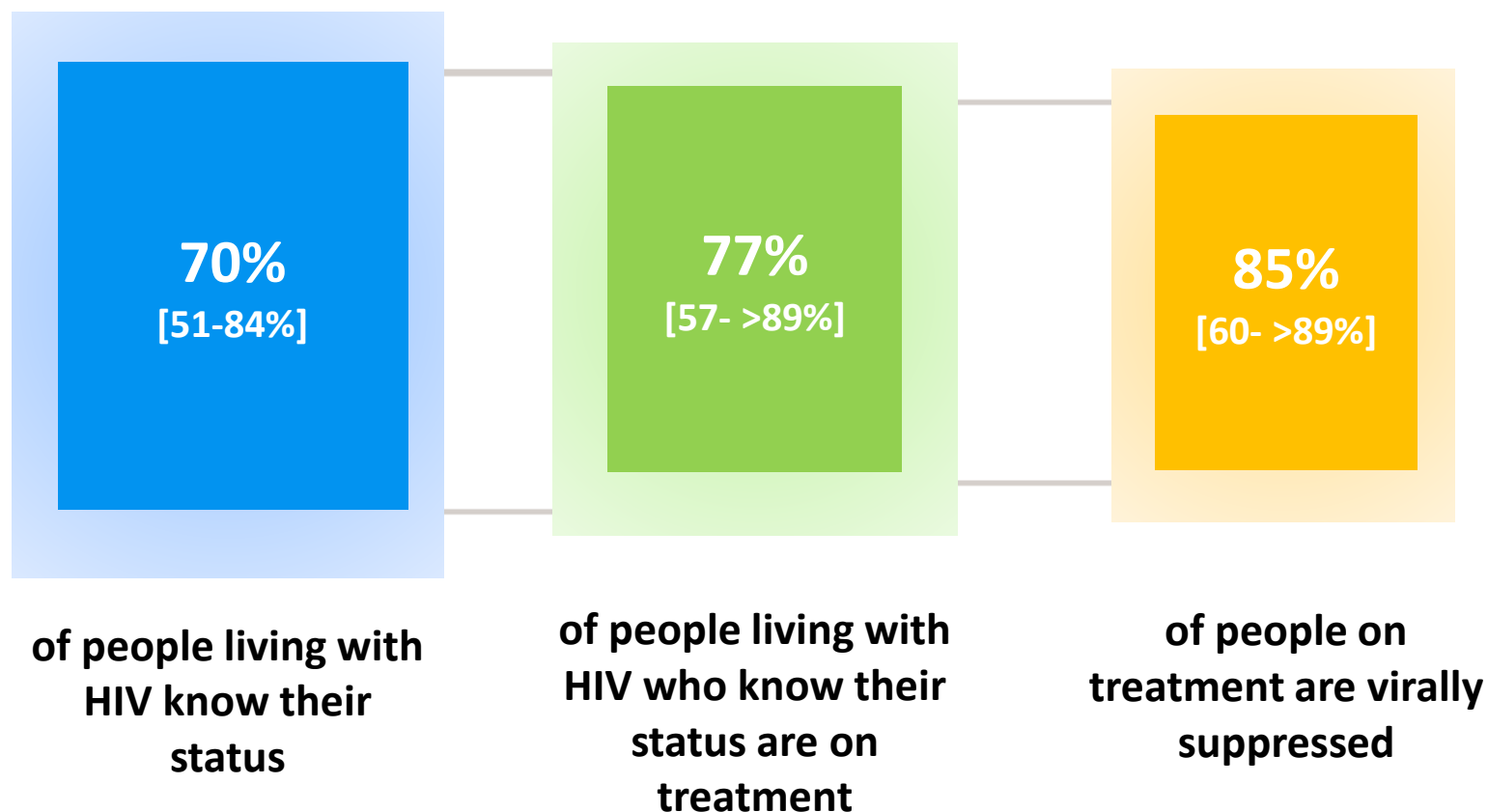
90%

**of all PLWH will
receive sustained
antiretroviral
therapy**

90%

**of all PLWH
receiving
antiretroviral
therapy will have
durable
suppression**

Reaching the 90/90/90 Targets



Stark Gaps in Continuum among Key Populations

Gay men and other men who have sex with men (Moscow)

13%

36%

64%

People who inject drugs (India)

41%

52%

83%

Gay men and other men who have sex with men (India)

30%

68%

78%

of PLHIV know their status

of PLHIV who know their status are on treatment

of PLHIV on treatment are virally suppressed

Barriers to Epidemic Control

- Coverage
 - Access (geographic, language, cultural competency)
 - Demand (uptake by communities and clients)
- Quality
 - Technical quality (safety, evidence-based)
 - Interpersonal quality (respectful care)
- Efficiency
 - For health system
 - For clients

Putting People at the Center

WHICH?

Which clinical, laboratory and supportive services are needed?

SERVICE
INTENSITY

SERVICE
FREQUENCY

WHEN?

How often are services provided?

People
Living
With HIV

SERVICE
LOCATION

SERVICE
PROVIDERS

WHERE?

Where are services being provided?

WHO?

Who is providing services?

Program Design “Control Knobs”



Service Frequency

Monthly
Bimonthly
Every 6 months
Every 12 months



Service Intensity

ART initiation and refills
OI prevention and treatment
Clinical monitoring
Laboratory monitoring
Psychosocial support



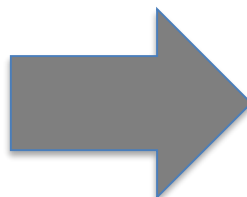
Service Location

Hospital (inpatient or outpatient)
HIV clinic
Primary care clinic
Community
Home



Service Provider

Physician	Clinical Officer
Nurse	CHW
Pharmacist	Laboratorian
Peer	Family



90:90:90

Quality of Life

Efficiency

Equity

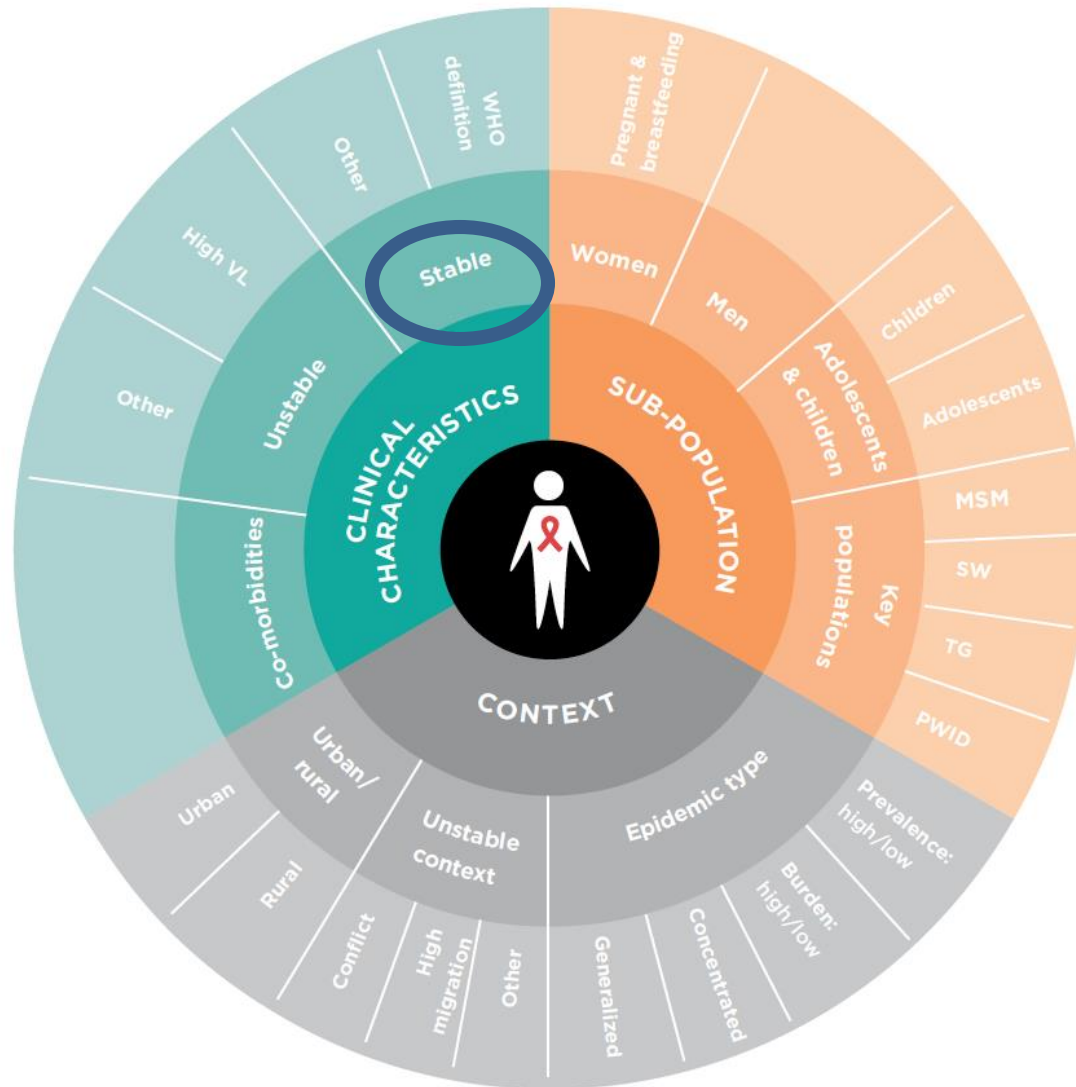
Epidemic Control

Differentiated Service Delivery to the Rescue?

In response to concerns about coverage, quality and efficiency, many global and national guidelines now recommend the use of differentiated service delivery:

“A client-centered approach that simplifies and adapts HIV services across the cascade to reflect the preferences and expectations of various groups of people living with HIV while reducing unnecessary burdens on the health system.” – IAS

Differentiating Services for Multiple Groups



Defining Stable Patients

- Receiving ART for at least 1 year AND
- No adverse drug reaction AND
- No current illnesses or pregnancy AND
- Good understanding of lifelong adherence AND
- Evidence of treatment success:
 - Two consecutive undetectable viral load
 - Rising CD4 count or CD4>200 cells/mm³ and adherence measure



FACILITY-BASED
INDIVIDUAL MODELS



HEALTH CARE WORKER-
MANAGED GROUPS



OUT-OF-FACILITY
INDIVIDUAL MODELS

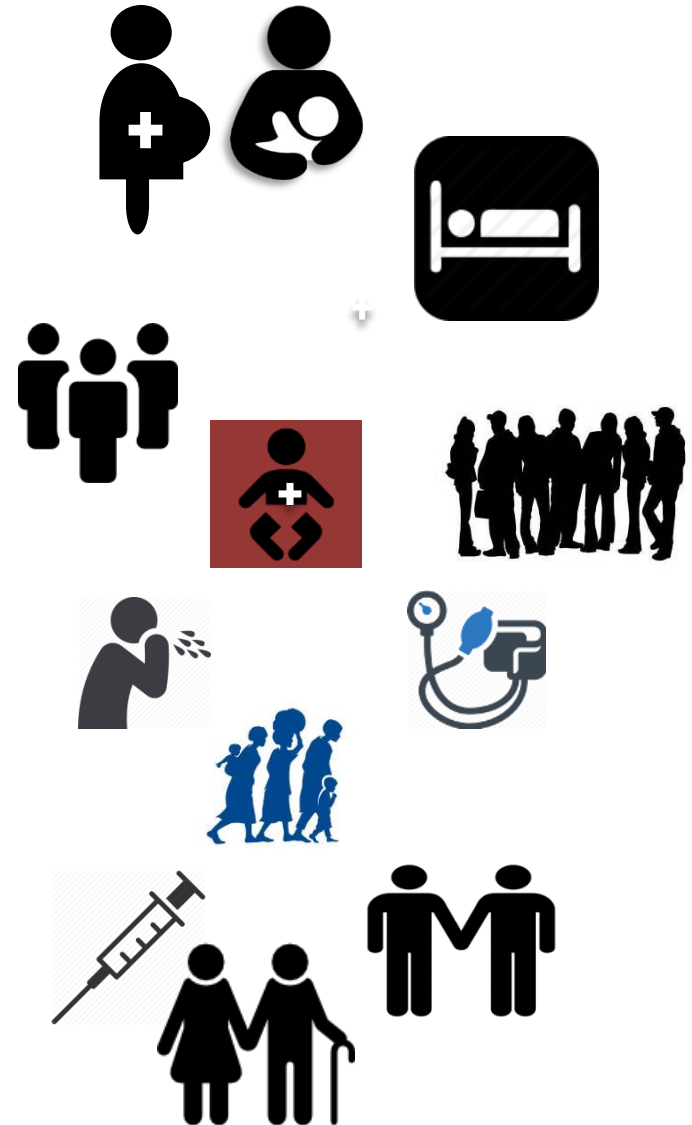


CLIENT-MANAGED
GROUPS

www.differentiatedcare.org

Beyond “Stable Patients”

- Pregnant/post-partum women
- Patients at high risk (advanced disease, unsuppressed viral load)
- Men
- Children and adolescents
- Patients with HIV and co-morbid conditions (TB, NCD)
- Migrants/mobile populations
- Key populations
- Older PLWHIV



Coverage, Quality and Impact Network (CQUIN)



Ethiopia



Kenya



Malawi



Mozambique



South Africa



Swaziland



Uganda



Zambia



Zimbabwe



The CQUIN Learning Network

Focus is on joint learning towards scale-up of differentiated service delivery models (DSDM) in order to improve coverage, quality and efficiency

- Knowledge exchange, sharing and learning
- Knowledge co-creation, especially where models, tools, resources are new and/or scarce

<https://cquin.icap.columbia.edu>



Sign up for the latest news from CQUIN

✉ GET UPDATES

Change Language ▾

HIV LEARNING NETWORK

The CQUIN Project for Differentiated Care

[ABOUT CQUIN](#)

[THE WORK](#)

[RESOURCES](#)

[NEWS & EVENTS](#)



Shaping the Future of HIV Service Delivery

[LEARN MORE ABOUT THE NETWORK >](#)

It's time to deliver differently

A client-centred approach
that simplifies and adapts HIV services

[LEARN MORE](#)



Today's Agenda

- Framing remarks: Drs. Tsitsi Apollo & Bactrin Killingo
- Introduction to CQUIN: Dr. Peter Preko
- DSD for individuals at high risk of disease progression:
Dr. Maureen Syowai
- Differentiated Monitoring & Evaluation: Dr. William Reidy
- Mozambique CAG update: Dr. Aleny Couto
- DSD for individuals w/HIV and NCDs:
Dr. Nomthandazi Lukhele
- The view from civil society: Dr. George Ayala

Thank You



ICAP

GLOBAL. HEALTH. ACTION.

Columbia University
Mailman School of Public Health