

# The CQUIN Learning Network

## Annual Meeting

### Global workshop on DSD for key populations

Anna Grimsrud  
International AIDS Society

February 13-15  
Maputo, Mozambique



**HIV LEARNING NETWORK**  
The CQUIN Project for Differentiated Service Delivery



**"If two elephants fight,  
it is the grass that gets  
trampled."**

- African proverb



## ■ The HOW: Differentiated care interventions:

- Treating people differently within a public health system



KEY CONSIDERATIONS FOR  
DIFFERENTIATED ANTIRETROVIRAL  
THERAPY DELIVERY FOR  
SPECIFIC POPULATIONS:

CHILDREN, ADOLESCENTS, PREGNANT AND  
BREASTFEEDING WOMEN AND KEY POPULATIONS

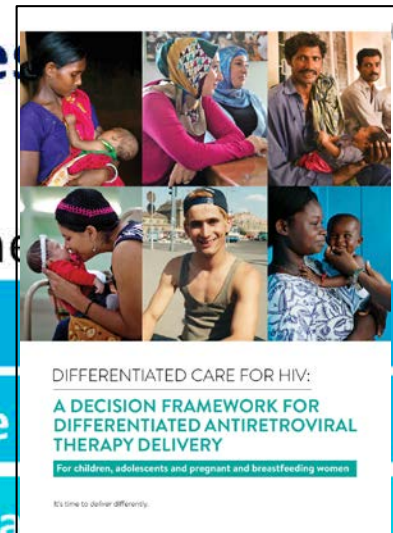


ce & retention support

clinical package

d ART

ce vs switch



DIFFERENTIATED CARE FOR HIV:

A DECISION FRAMEWORK FOR  
DIFFERENTIATED ANTIRETROVIRAL  
THERAPY DELIVERY

For children, adolescents and pregnant and breastfeeding women

It's time to deliver differently.

The Package of Care for Individuals with  
HIV and disease can include

- Rapid initiation of ART
- Systematic Cryptococcus antigen screening
- TB screening for isoniazid Preventive Therapy (if necessary)
- Screening for toxoplasmosis and cotrimoxazole prophylaxis
- Intensive follow-up



# Global Workshop on DSD for Key Populations



# Showcase highlights

## Thailand, MSM and TG



Partnership with health services and community, out-of-facility individual model

\* Expansion of CBO responsibilities

## India, PWID



Identification, linkage and referral for pre-ART key populations, out-of-facility individual model

\* Pre-ART follow up, 396 of 444 navigated clients initiated ART

## Uganda, FSW



FSW-led community ART delivery (CCLADs)

\* Adaptation from DSD pioneers

## Burundi, MSM



Expansion of drop-in centres, , out-of-facility individual model

\* Leveraging legal service platform to include service provision

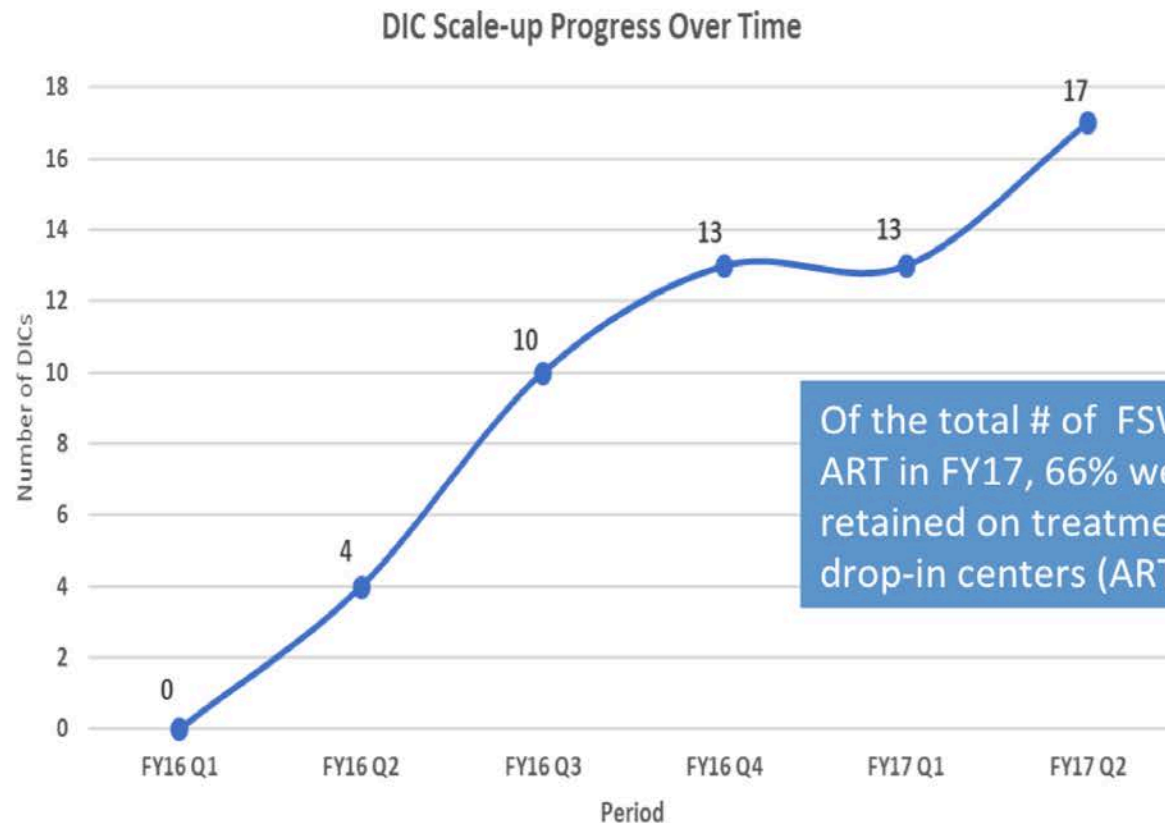


# Debate highlights



# Scale-up of DICs (Malawi)

- 17 DICs (13 for FSWs and 4 for MSM) to create a safe space for KPs and provide KP-friendly services



Of the total # of FSWs initiated on ART in FY17, 66% were initiated and retained on treatment through the drop-in centers (ART uptake at 97%)

# G-link's Thanh Danh Clinics

- MSM owned and led, for profit with social enterprise heart
- 176 ART clients enrolled to date  
80% MSM, 10% TGW, 10% other  
No rx failure to date



	ART refills	Clinical consultations	Psychosocial support
WHEN	Monthly officially (but with flex for out of town clients)	Monthly but...flexible	@ diagnosis, when initiating ART, at client request
WHERE	<ul style="list-style-type: none"><li>- @ clinic</li><li>- Home delivery</li><li>- By currier</li></ul>	<ul style="list-style-type: none"><li>- @ clinic</li><li>- By phone/online for out of town clients</li></ul>	<ul style="list-style-type: none"><li>- @ clinic</li><li>- By phone/online for out of town clients</li></ul>
WHO	Gay MD/Rx	Gay MD/RN	Gay RN/counselor
WHAT	ART refill	<ul style="list-style-type: none"><li>- Physical exam</li><li>- Rescript</li><li>- Blood draw</li></ul>	<ul style="list-style-type: none"><li>- Case management (psychosocial, financing, housing)</li><li>- Lay mental health counseling</li></ul>

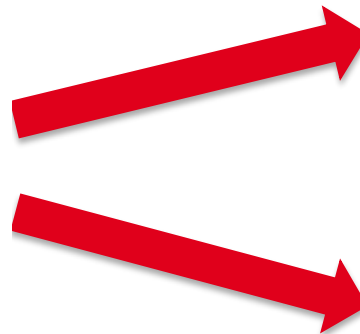




“We’re building the ship  
as we’re sailing it”



Visit [www.differentiatedservicedelivery.org](http://www.differentiatedservicedelivery.org)



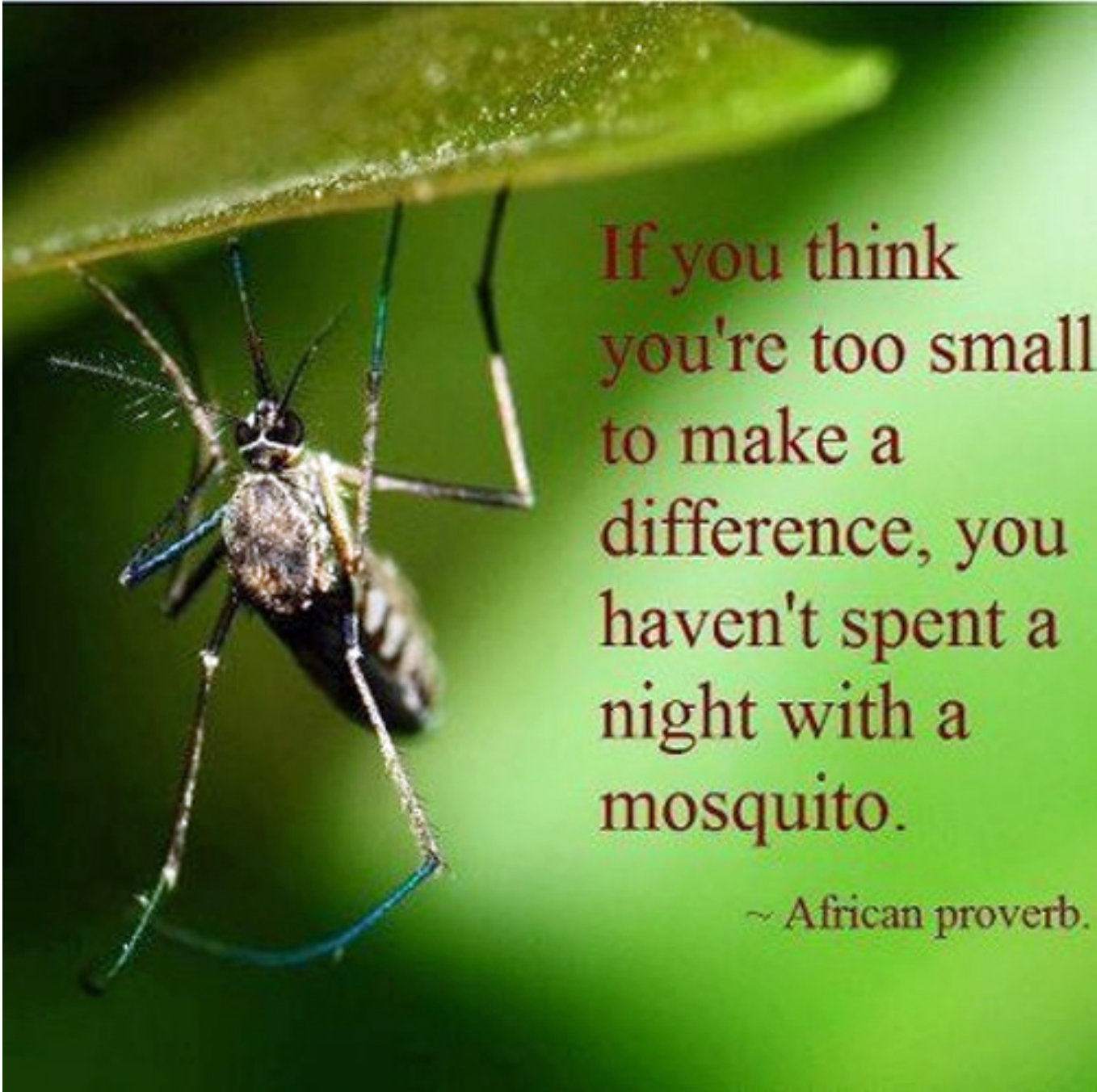
Decision  
Framework  
for key  
populations

Decision  
Framework  
for HIV  
testing and  
linkage



**"A chattering bird  
builds no nest."**

- African proverb



If you think  
you're too small  
to make a  
difference, you  
haven't spent a  
night with a  
mosquito.

~ African proverb.