

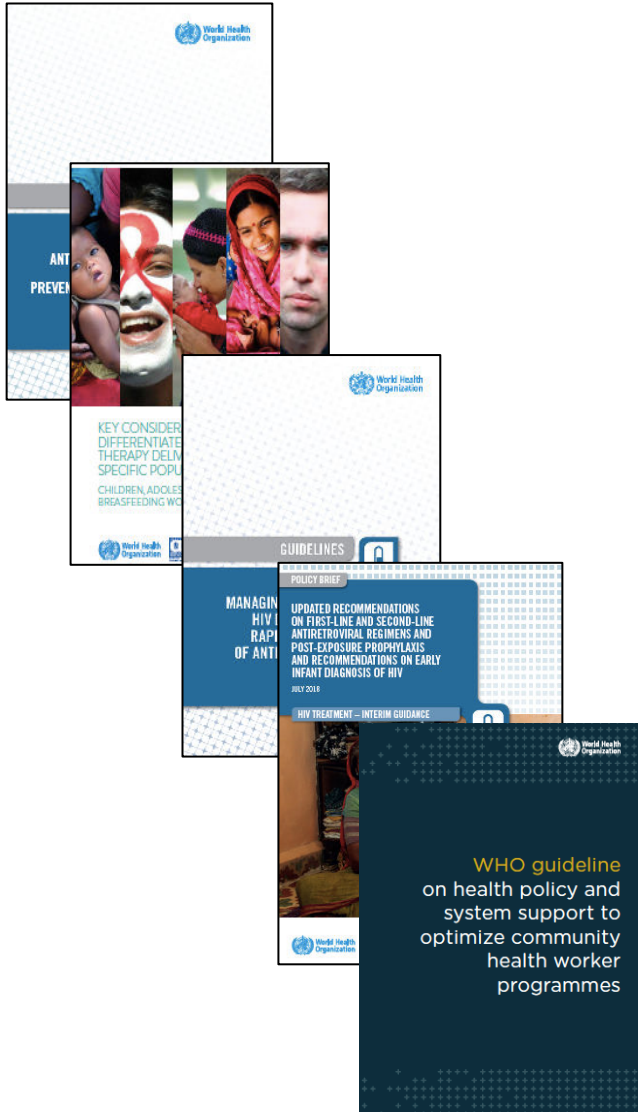
DSD: the view from WHO

Dr Nathan Ford MPH, PhD, FRCPE
Dept HIV & Global Hepatitis Programme
World Health Organization, Geneva
5 November 2018



HIV LEARNING NETWORK
The CQUIN Project for Differentiated Service Delivery

Key WHO DSD policy guidance



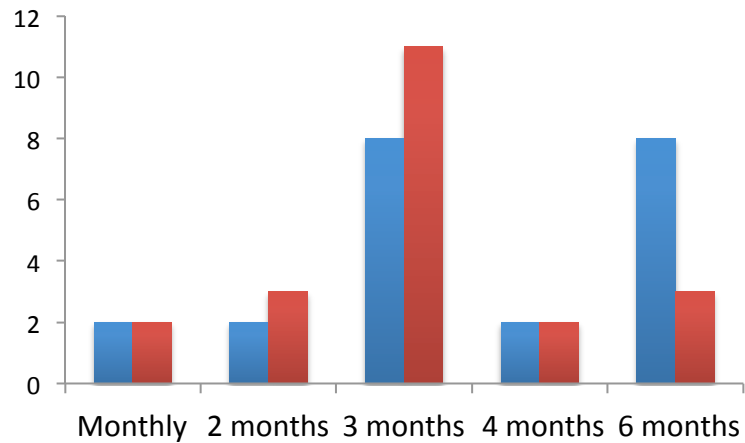
- **2016: Consolidated ART Guidelines**
 - Task sharing/peer & CHW roles
 - Frequency of clinic visits/refills
 - Community delivery
- **2016: Key considerations for differentiated antiretroviral therapy delivery for specific populations**
 - “Stability” definition expanded to include pregnancy & children >2 yrs
- **2017: Guidelines on managing advanced HIV disease and rapid initiation of ART**
 - Package of care for advanced HIV disease
 - Recommendation on rapid ART/same day start
- **2018: Updated recommendations on 1st & 2nd line ART**
 - Will DTG facilitate DSD?
- **2018: Guideline on health policy and system support to optimize community health worker programmes**
 - Recommendations to promote the role of CHWs in health programmes

Uptake of guidance

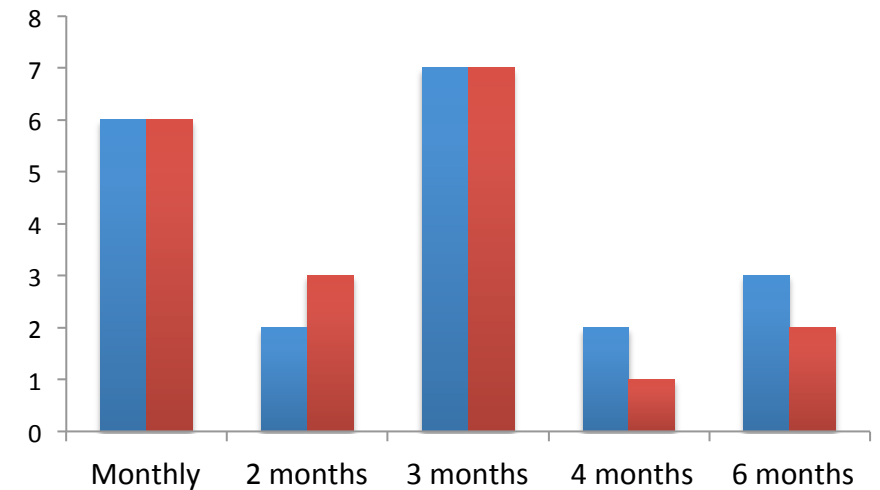
- “Treat All” almost universally adopted
- Key principles of DSD for stable clients widely taken up
 - All countries surveyed had reduced frequency of clinic visits/drug refills for adults on ART
- Multiple operational manuals developed to support national level implementation
<http://www.differentiatedcare.org>
- Implementation science continues to provide insights into optimal strategies for DSD implementation

Uptake of policy (October 2018): stable clients

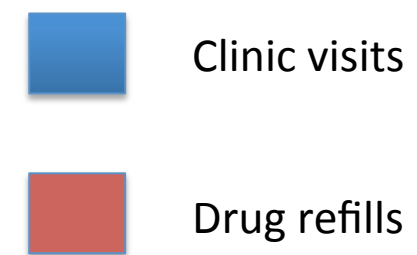
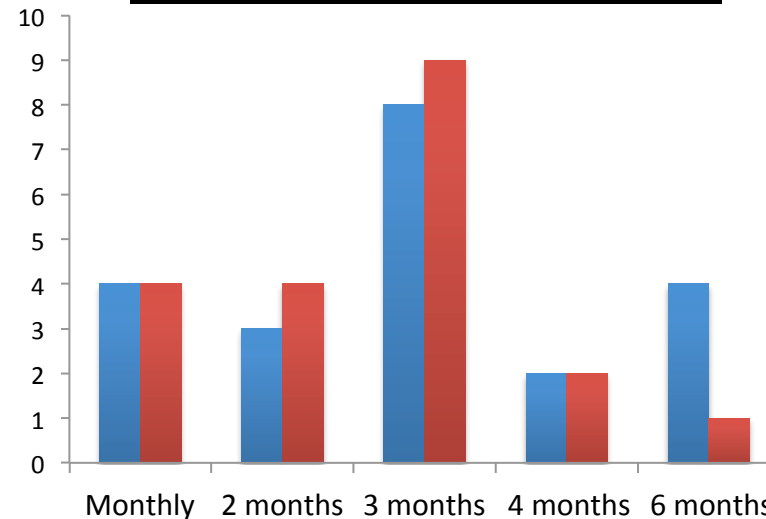
Adults: 3-6 months



Children: 1-3 months



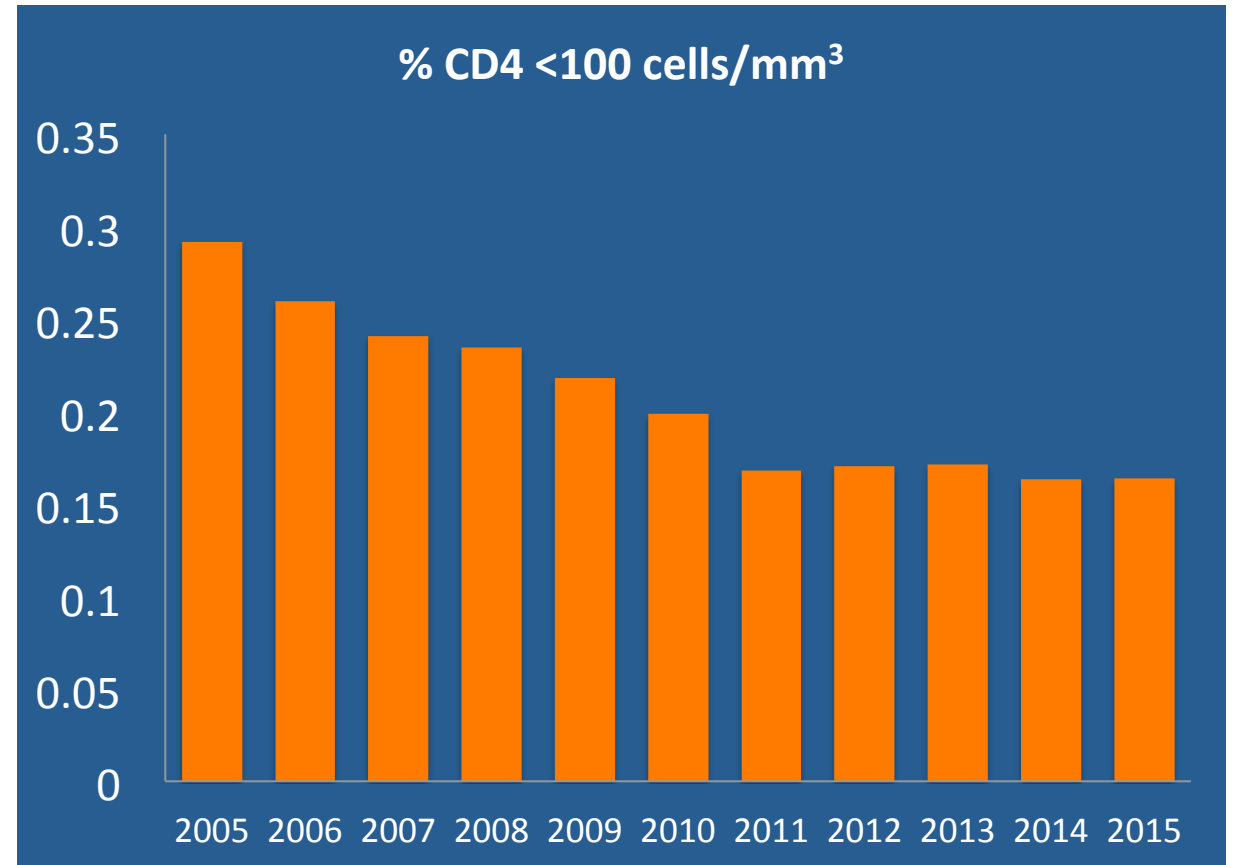
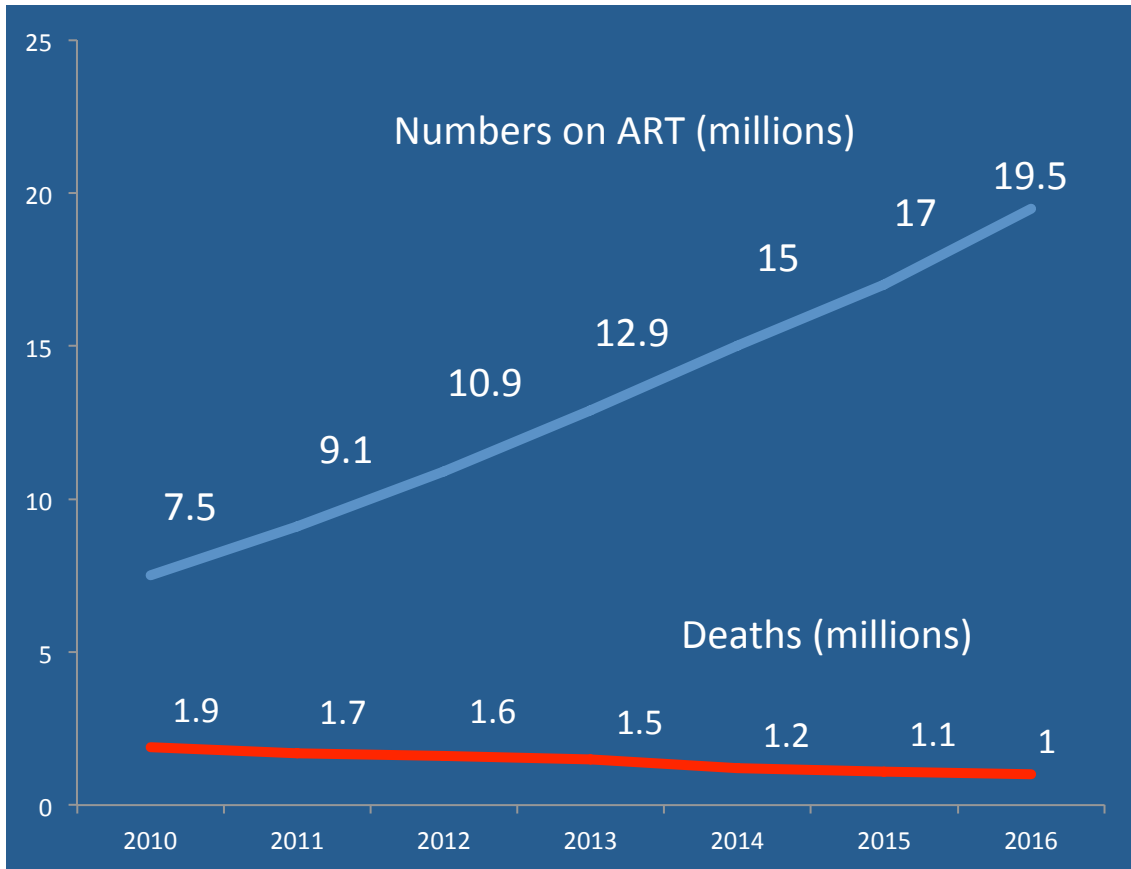
Adolescents: 3 months



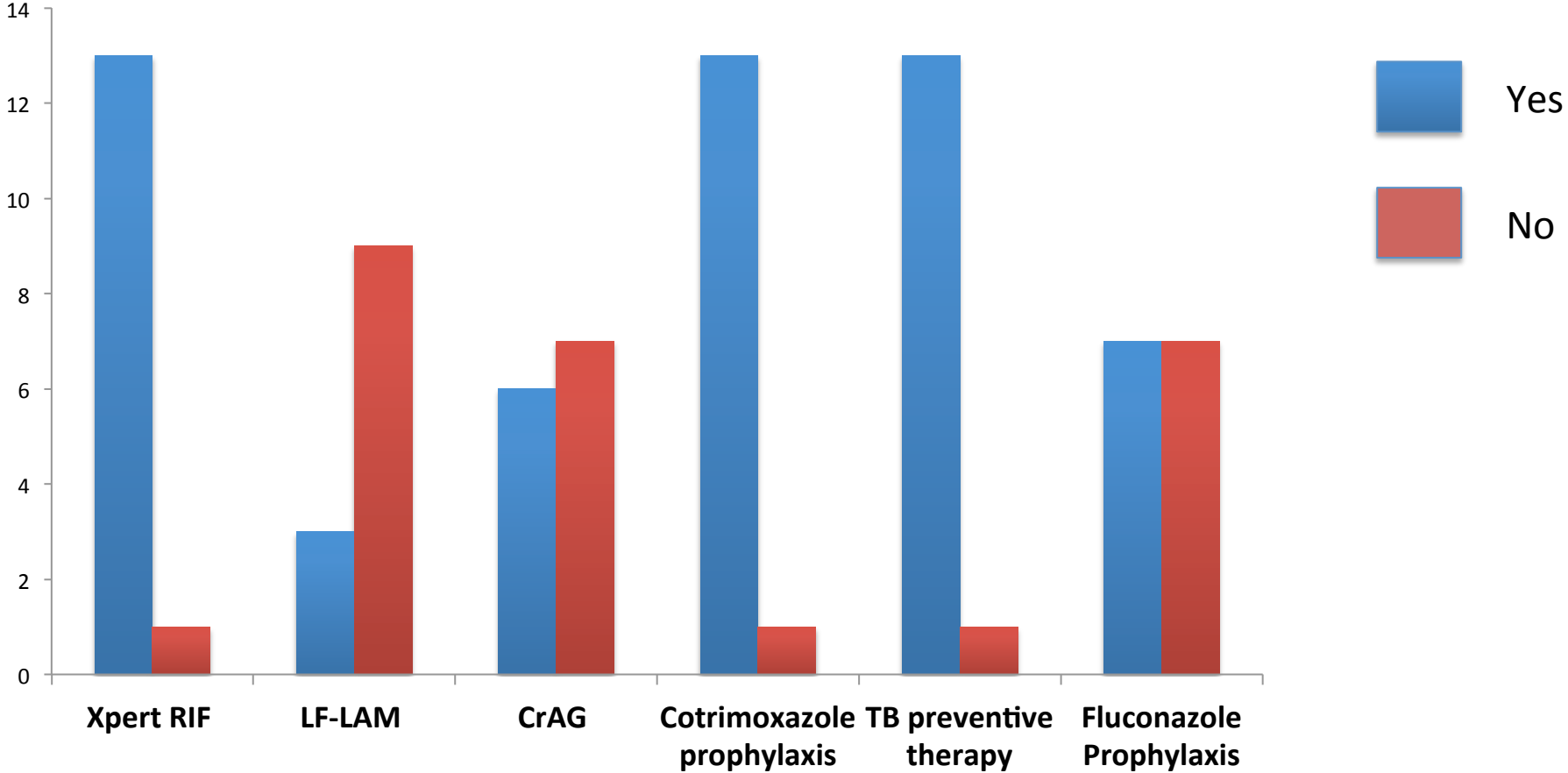
Is DSD reallocating resources?

“When a health system adopts a more responsive model of care...it can allocate resources more effectively, provide better access for underserved populations and deliver care in ways to improve quality of care and life.”

Advanced HIV disease: an enduring challenge



Uptake of policy (October 2018): advanced HIV disease



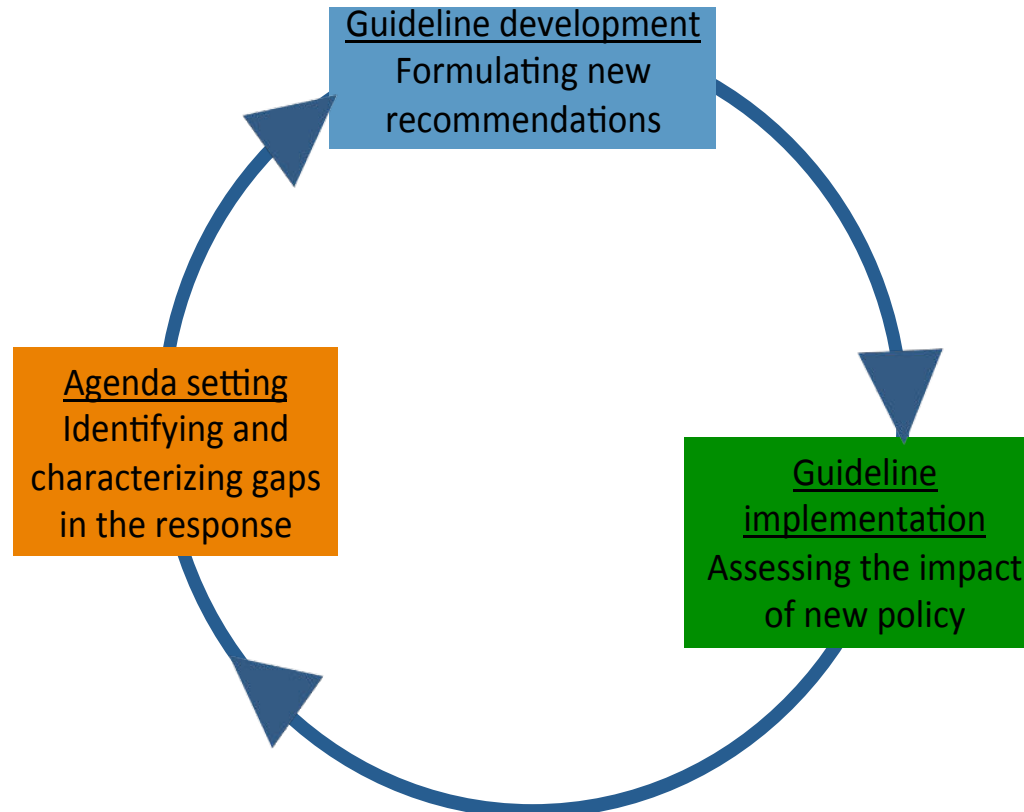
DSD: some challenges

- Advanced HIV disease
- Second-line ART
- Pregnant women, adolescents & children
- Integrating DSD across chronic diseases

What's next for WHO

- Ongoing technical support to countries
- Peer review of 2016 guideline recs on HIV service delivery
- 2019 guideline updated
 - Review of definitions (stable client)
 - Community ART delivery
 - Frequency of visits/dispensing
 - DSD & NCDs

The contribution of programme data to WHO guidance



Thank you

Āmeseginalehu

Zikomo

Merci

Waita zvako

Natotela

Ngiyabonga

Asante sana

Obrigado