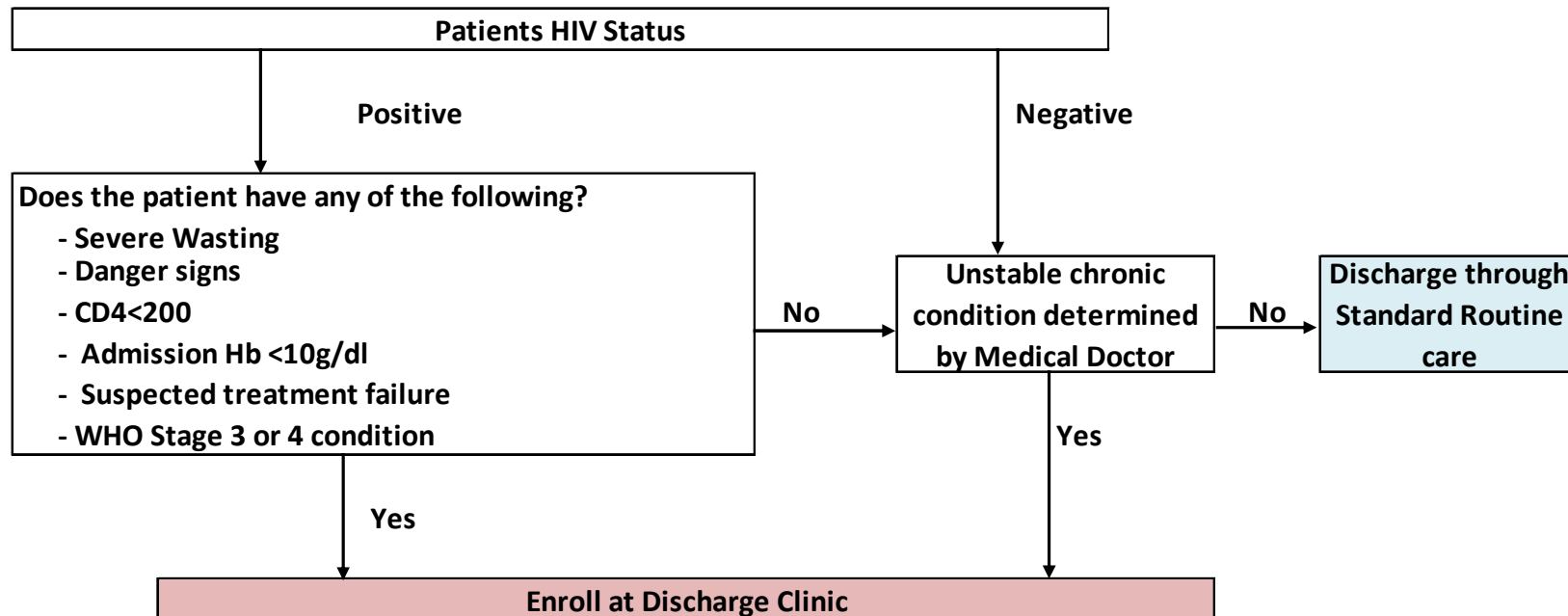


Algorithm for Enrolling Patients to Discharge Clinic



Criteria	Definition
Severe wasting	BMI \leq 16 or wasted to the point of being unable to stand for weight measurement
Danger Signs	Danger signs including any one of the following: respiratory rate $>$ 30 per minute, temperature $>$ 39 °C, heart rate $>$ 120 beats per minute, or unable to walk unaided
Suspected treatment failure	Has been on ART for $>$ than 6 months but presents with VL $>$ 1000 or AIDS defining opportunistic infection
WHO stage 3 or 4	Presents with a condition classified as such in the WHO guidelines