



Differentiated Service Delivery for Key Populations

Virtual Meeting: August 25-26 and 30-31, 2021

HIV Testing and Linkage to PrEP and Treatment for Inmates in Zambia

Linah Kampilimba Mwango-RN, Bsc-Nrs, MPH

Deputy Chief of Party-Ciheb-Zambia

26th August 2021



HIV Learning Network
The CQUIN Project for Differentiated Service Delivery



Presentation Outline

Background

Zambia Correctional Services Site

Activities Conducted

Results

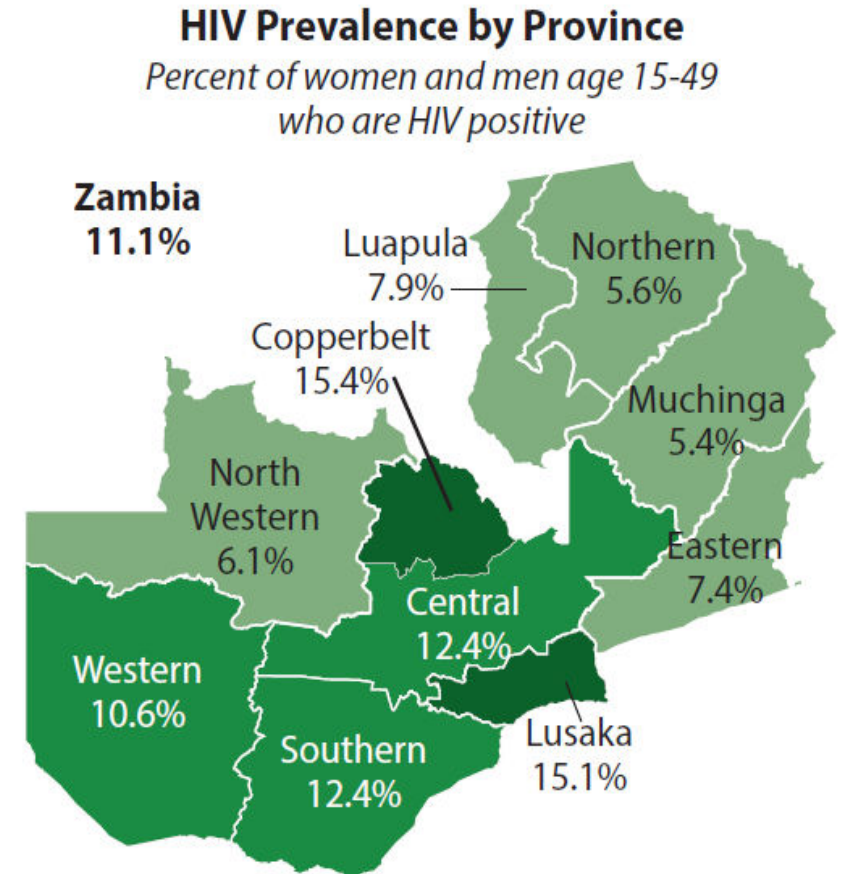
Lessons Learnt

Challenges/Recommendations



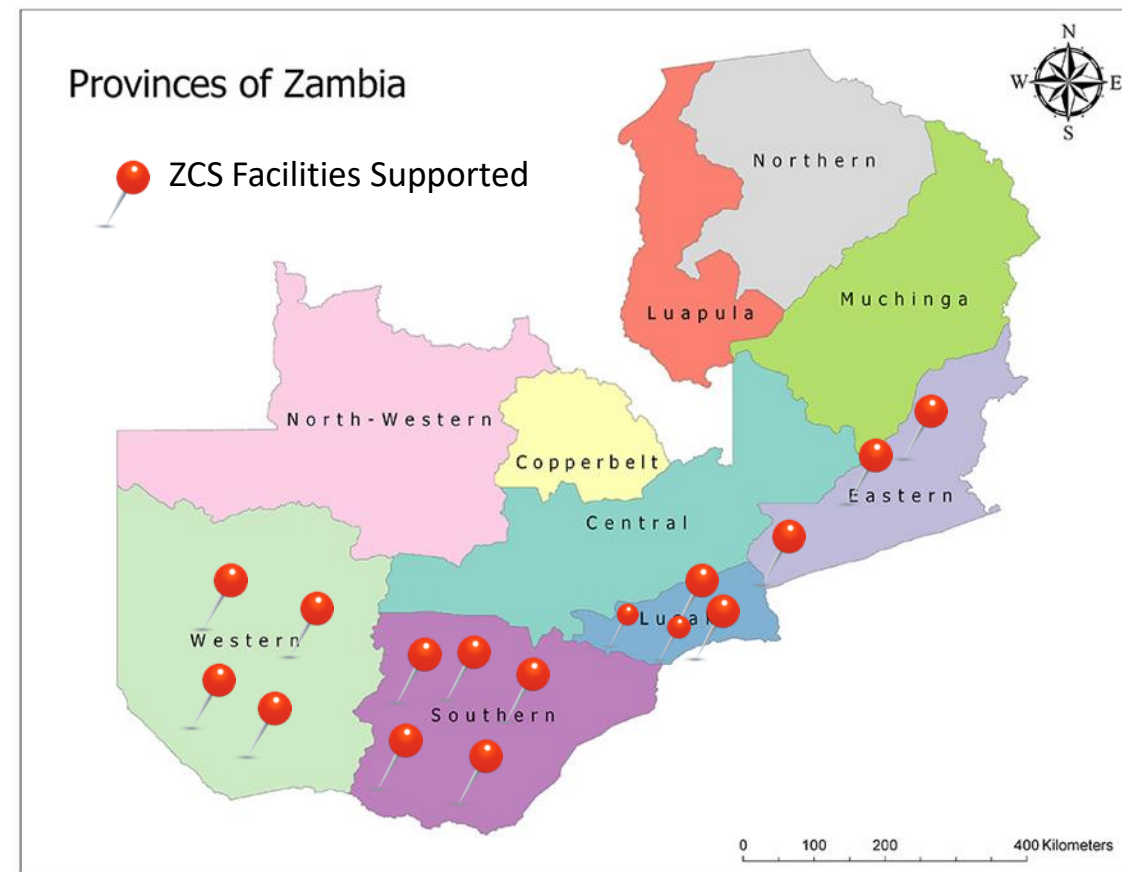
Background

- Approximately **21,078 incarcerated** persons across 87 correctional facilities with occupancy of over 300%.
- **Incarcerated persons represent a critical key population** often at risk of HIV infection during incarceration
- Inmates have limited access to HIV prevention options
- **HIV prevalence** among incarcerated people in Zambia is estimated to be 14.3%, slightly higher than the national HIV prevalence (11.1%).
- In collaboration with Zambia Correctional Services (ZCS) and Ministry of Health, **Ciheb Zambia sub-granted by UMB provides HIV prevention, testing, and linkage services**



Supported Correctional Services Facilities

	Prison Name	District	Population
1	Monze Correctional Facility	Monze	385
2	Mazabuka Correctional Facility	Mazabuka	350
3	Choma Correctional Facility	Choma	420
4	Kalomo Correctional Facility	Kalomo	180
5	Livingstone Correctional Facility	Livingstone	630
6	Senenga Correctional Facility	Senenga	250
7	Kalabo Correctional Facility	Kalabo	130
8	Mongu Correctional Facility	Mongu	550
9	Kaoma Correctional Facility	Kaoma	210
10	Namuseche Correctional Facility	Chipata	1150
11	Petauke Correctional Facility	Petauke	300
12	Lusaka Central Correctional Facility	Lusaka	1200
13	Kamwala Remand Correctional Facility	Lusaka	350
14	Mwembeshi Open Air	Chilanga	350
15	Mwembeshi Maximum	Chilanga	750
16	Lundazi Correctional Facility	Lundazi	350



Total incarcerated at supported sites 7,555 @June 21

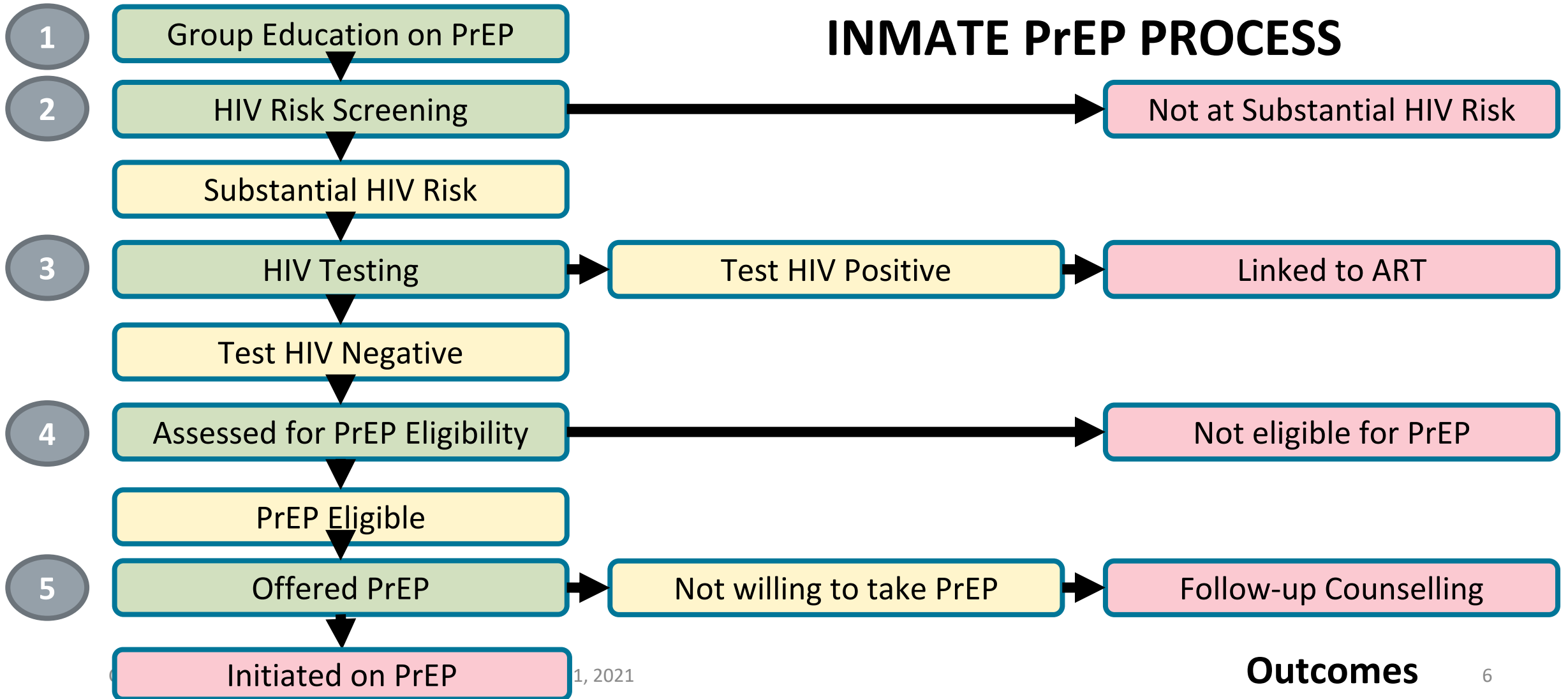
Activities Conducted

- Training and mentorship of ZCS staff in HIV prevention and treatment
- Training of inmates as peer educators in HIV prevention, testing and linkage to treatment
- Support strengthening and establishment of Prison Health Committees
- Conducting health education messages on prevention, testing and linkage to services
- Trained officers in COVID-19 infection prevention, vaccine management (Risk communication & community engagement, adverse events, cold chain)
- Provide COVID IPC supplies and equipment



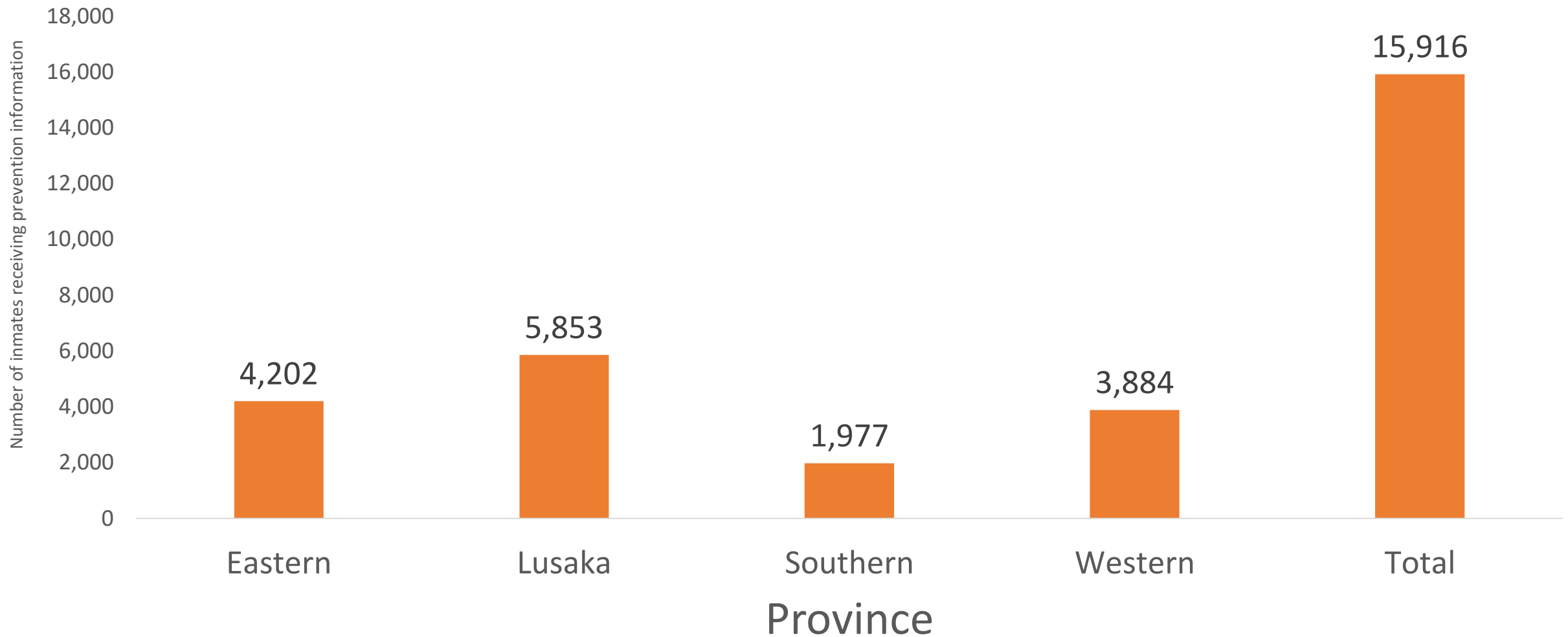
PrEP Implementation in the ZCS Facilities

INMATE PrEP PROCESS

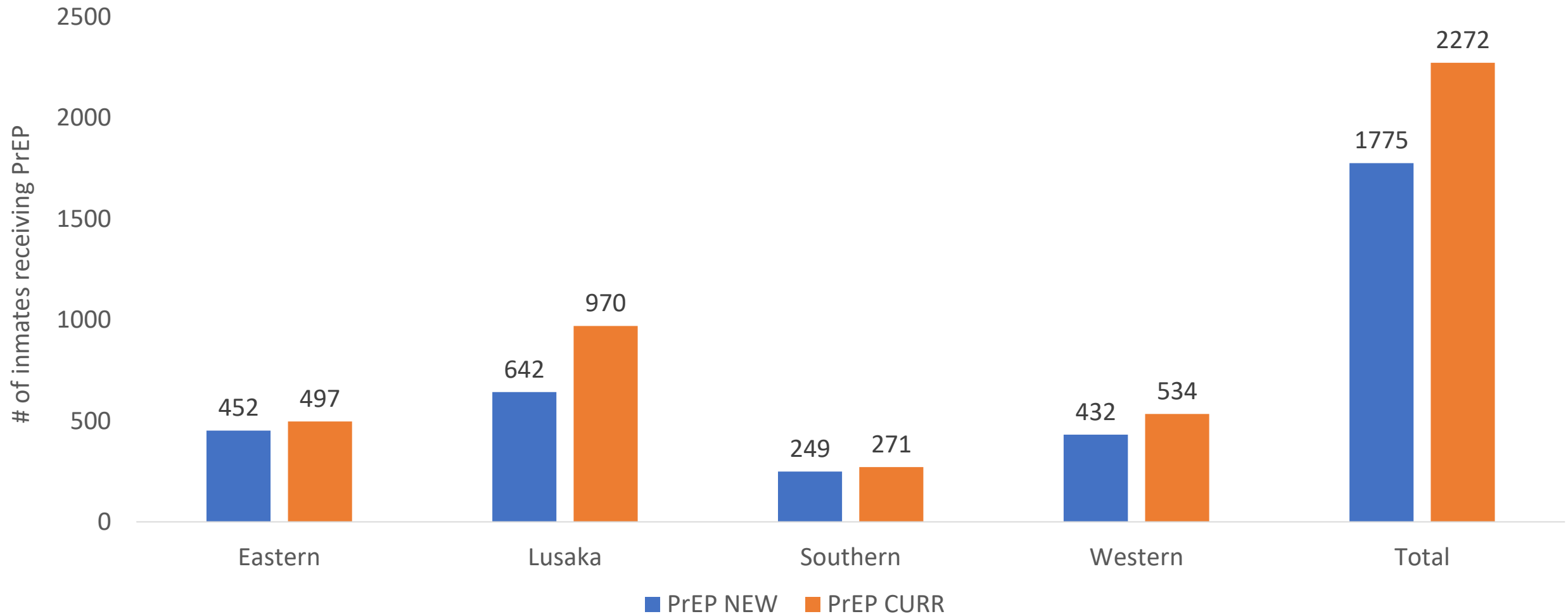


KP_PREV-Inmates

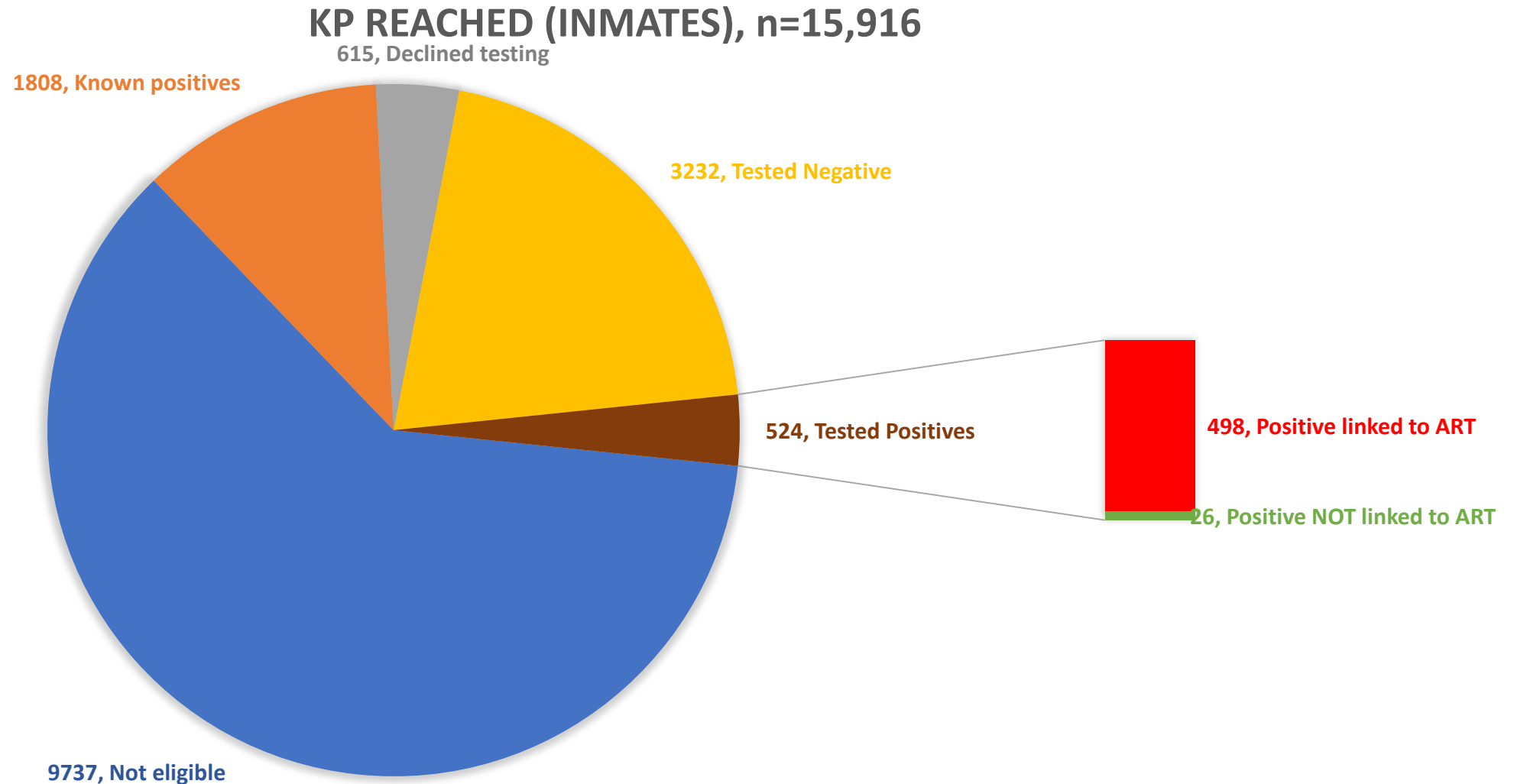
Oct 2020 - June 2021 (16 facilities)



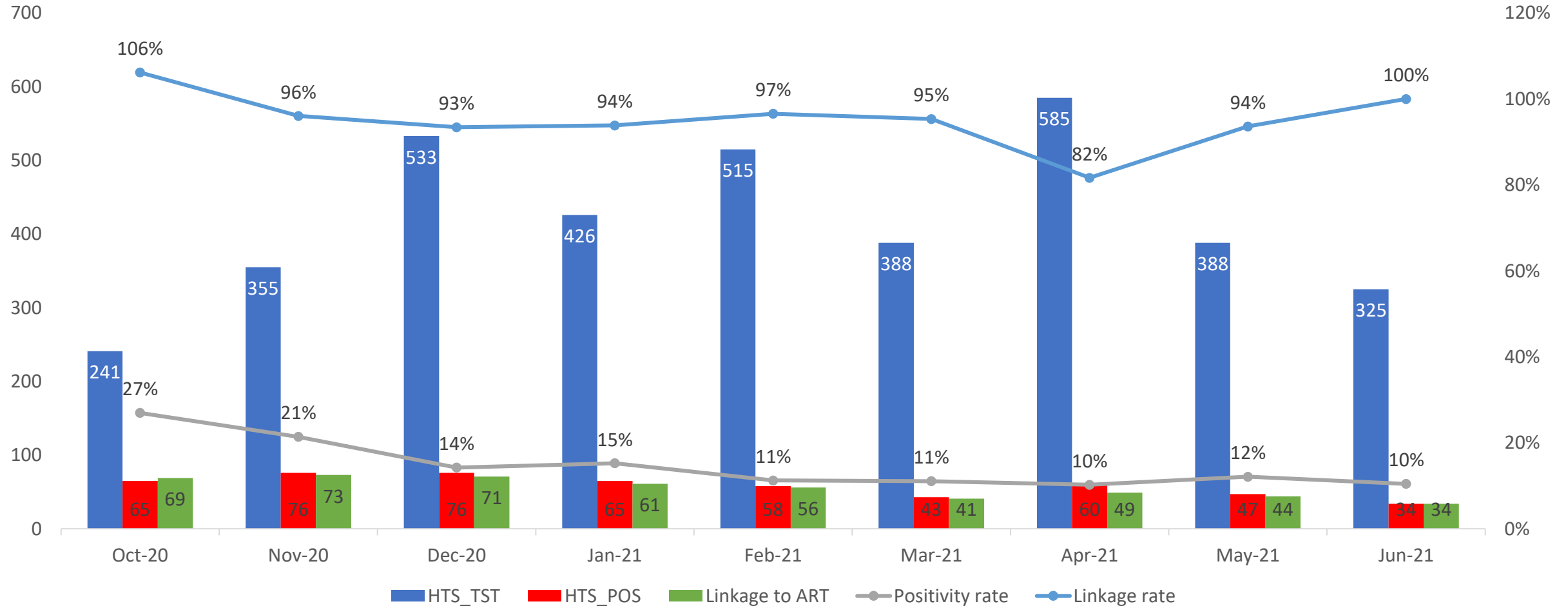
PrEP_New and PrEP_CURR: Inmates Oct 20-Jun21 (16 facilities)



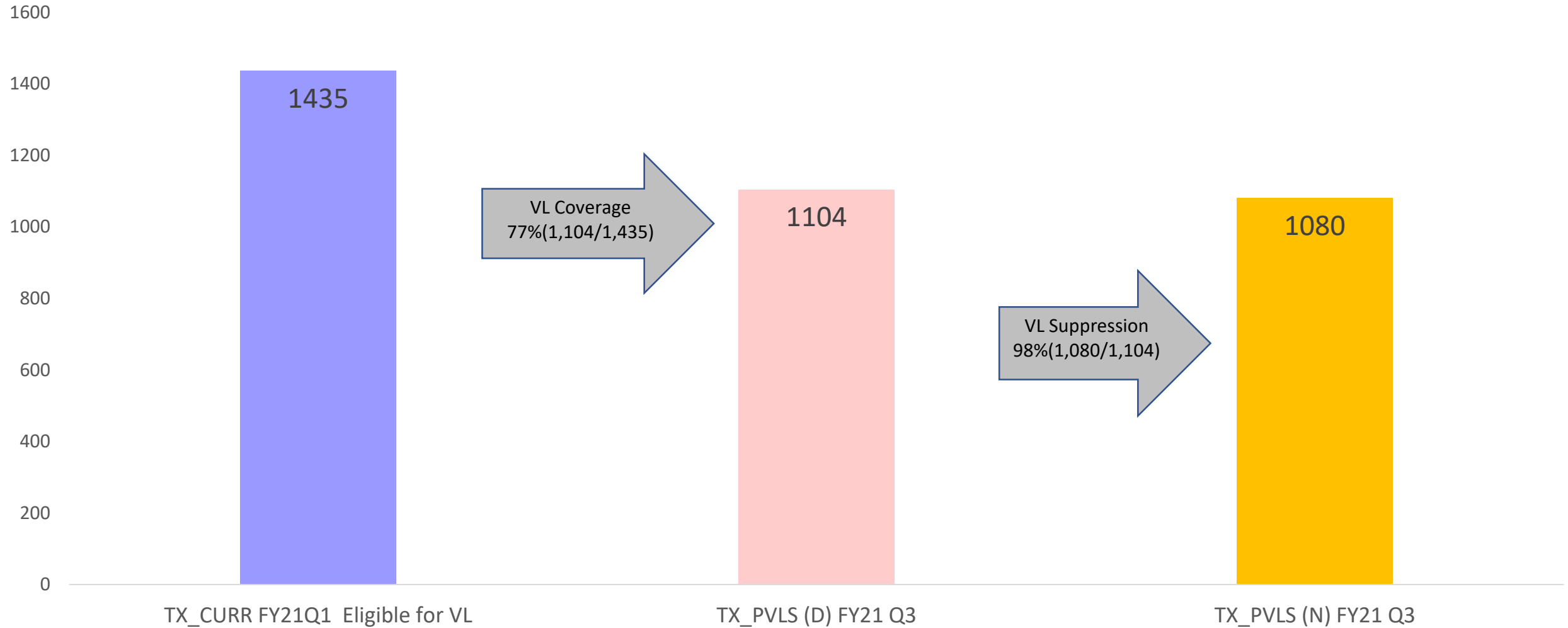
Prevention, Testing & Linkage: Inmates, Oct 20-Jun21 (16 facilities)



Monthly Trends-KP_HTS-TST, HTS_POS, Linkage Oct 20- Jun 21 (N=16)



KP Viral Load



Lessons Learnt

- Collaboration with ZCS and MOH improves HIV service delivery for inmates
- Training and mentoring the ZCS health care workers improves service delivery and enhances program ownership
- Using a DSD peer-to-peer model helps improve KP reach
- VL campaigns improved the VL coverage

Challenges and Recommendations

#	Challenges	Recommendations
1	Inmate transfers without referral letters	Coordination meetings with Provincial Health Coordinators, Correctional Facility Health Coordinators and Warders
2	Inmates change names upon entry in CF, affecting continuity of HIV care	Education on correct details for continued managed
3	Some inmates not willing disclose their home addresses for fears of being investigated further-affecting index testing	Continued education and counselling

Acknowledgements

- Zambia Correctional Services
- Ministry of Health Zambia
- Centers for Disease Control and Prevention-Zambia
- University of Maryland Baltimore
- Ciheb-Zambia
- Inmates

*Thank
you!*