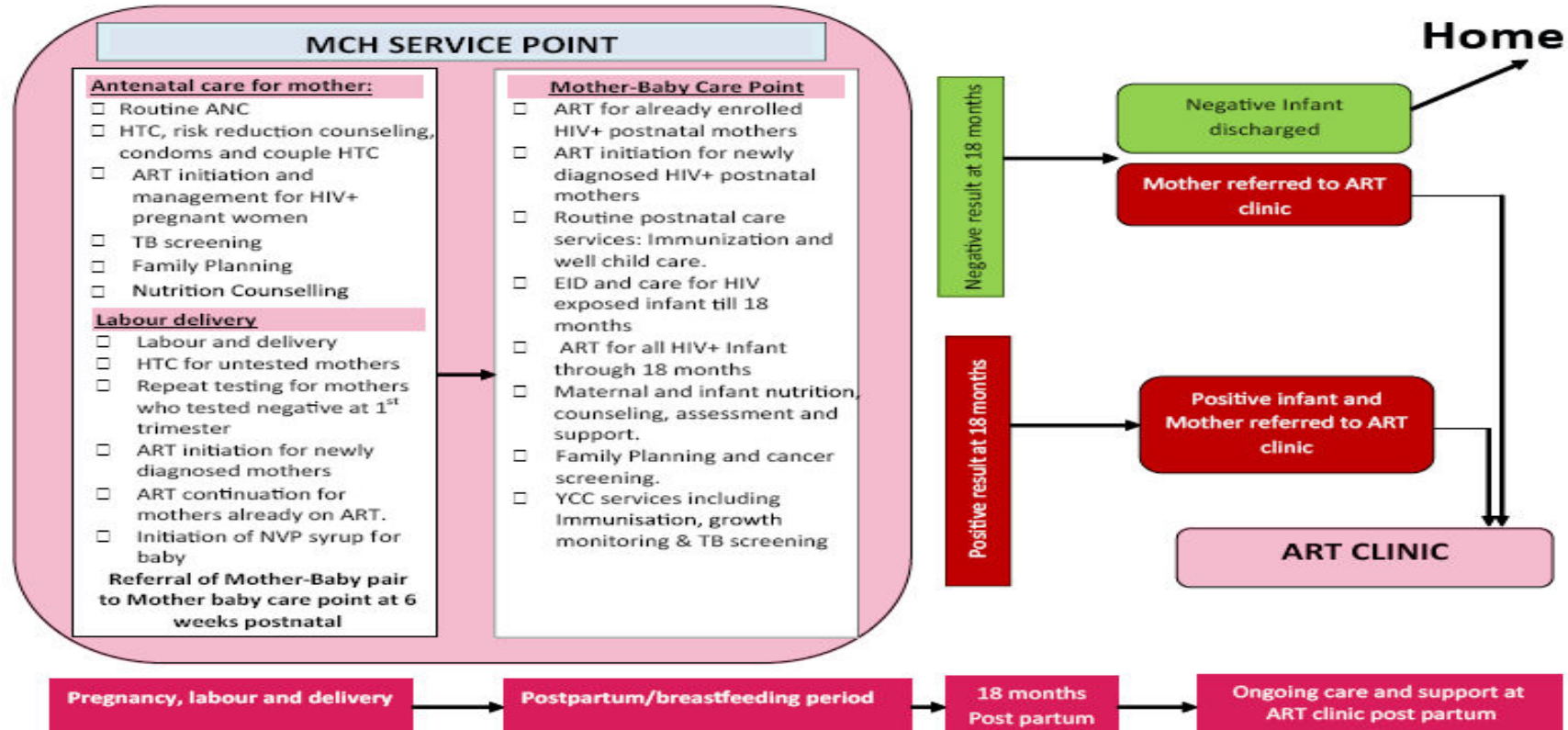




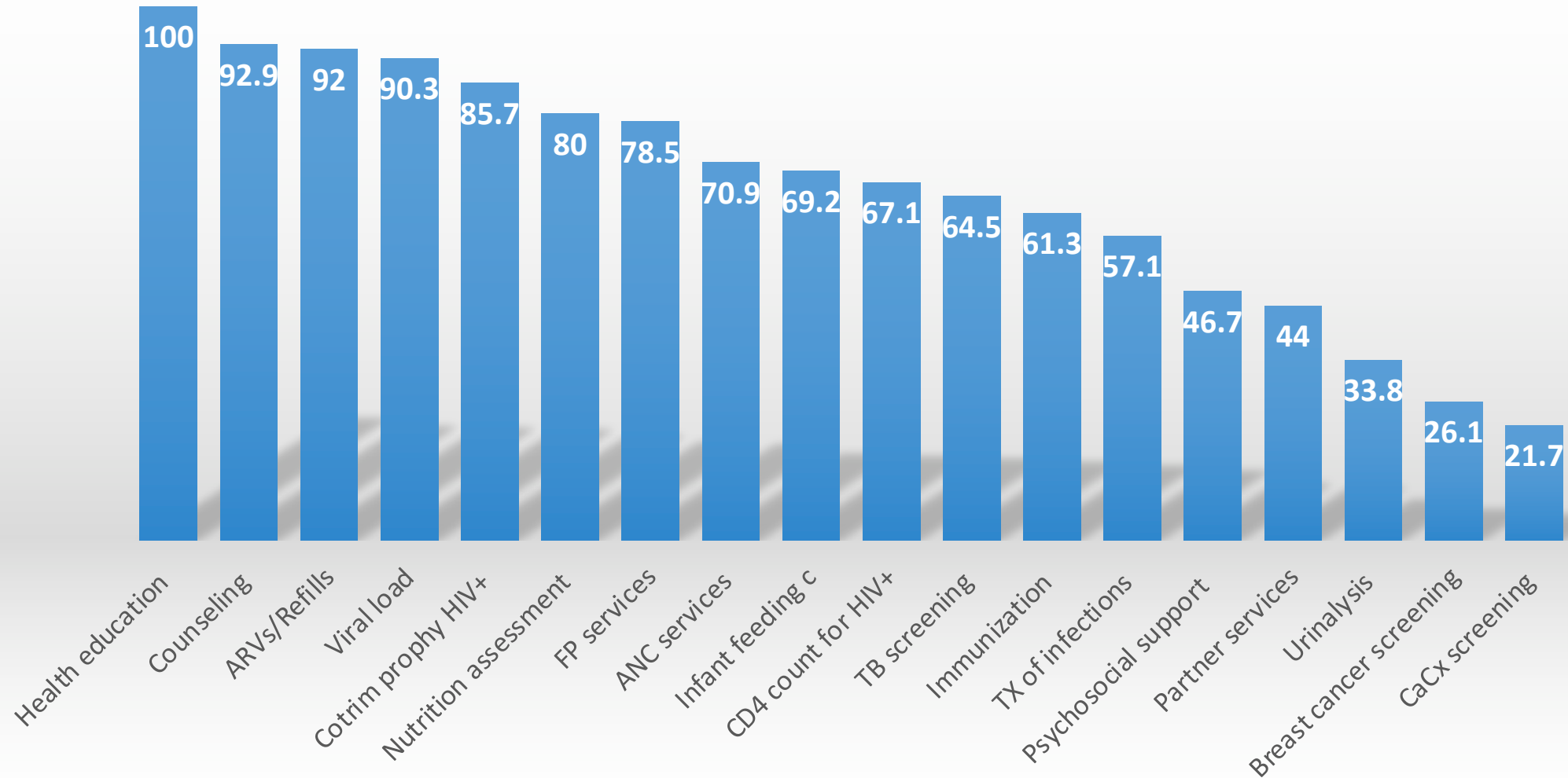
**The Mother Baby Care Point (MBCP)**  
**Uganda: Experiences and Opportunities**  
**for Integration**

# Mother-Baby Care point model

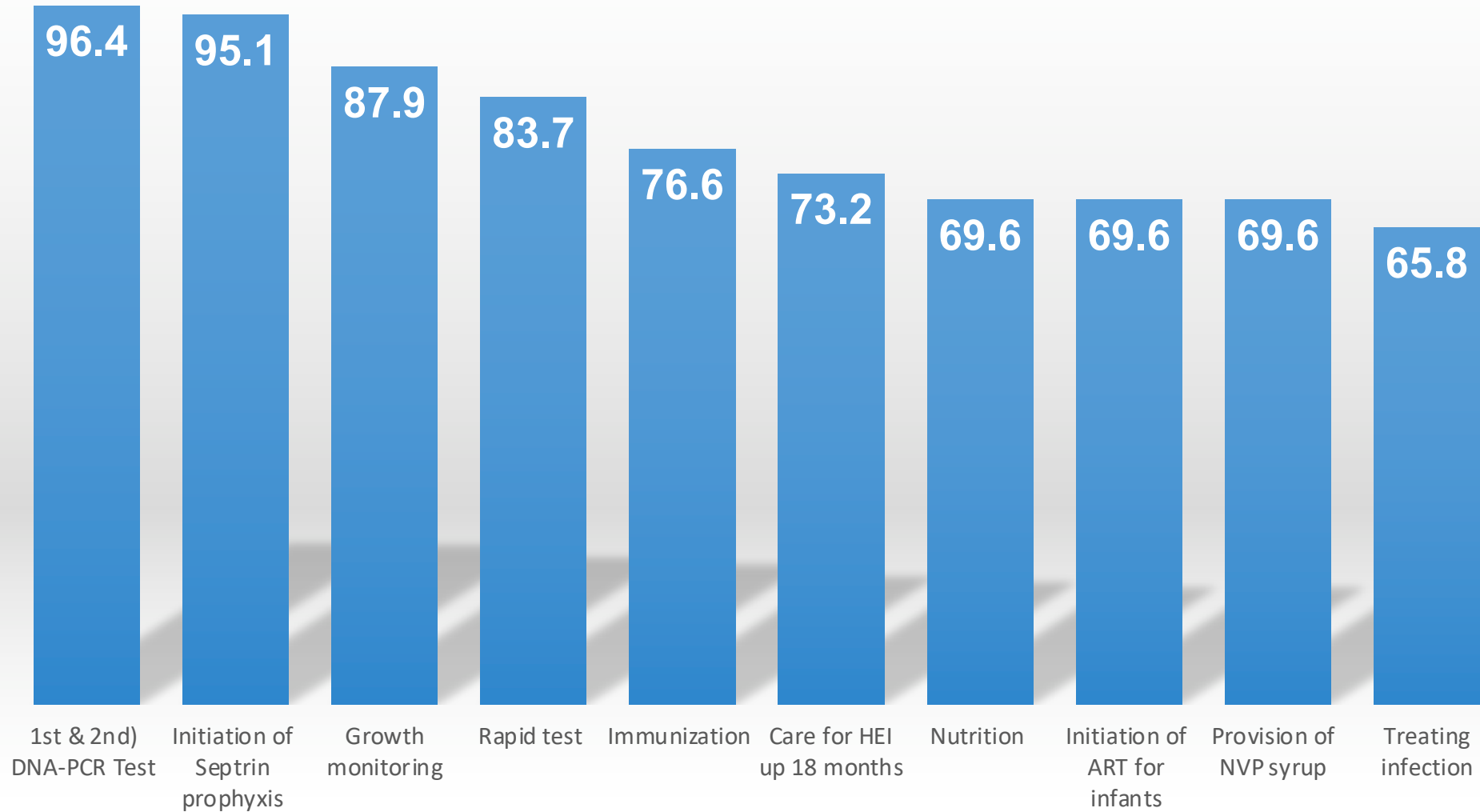
## Mother-Baby Care Point Service Delivery Model



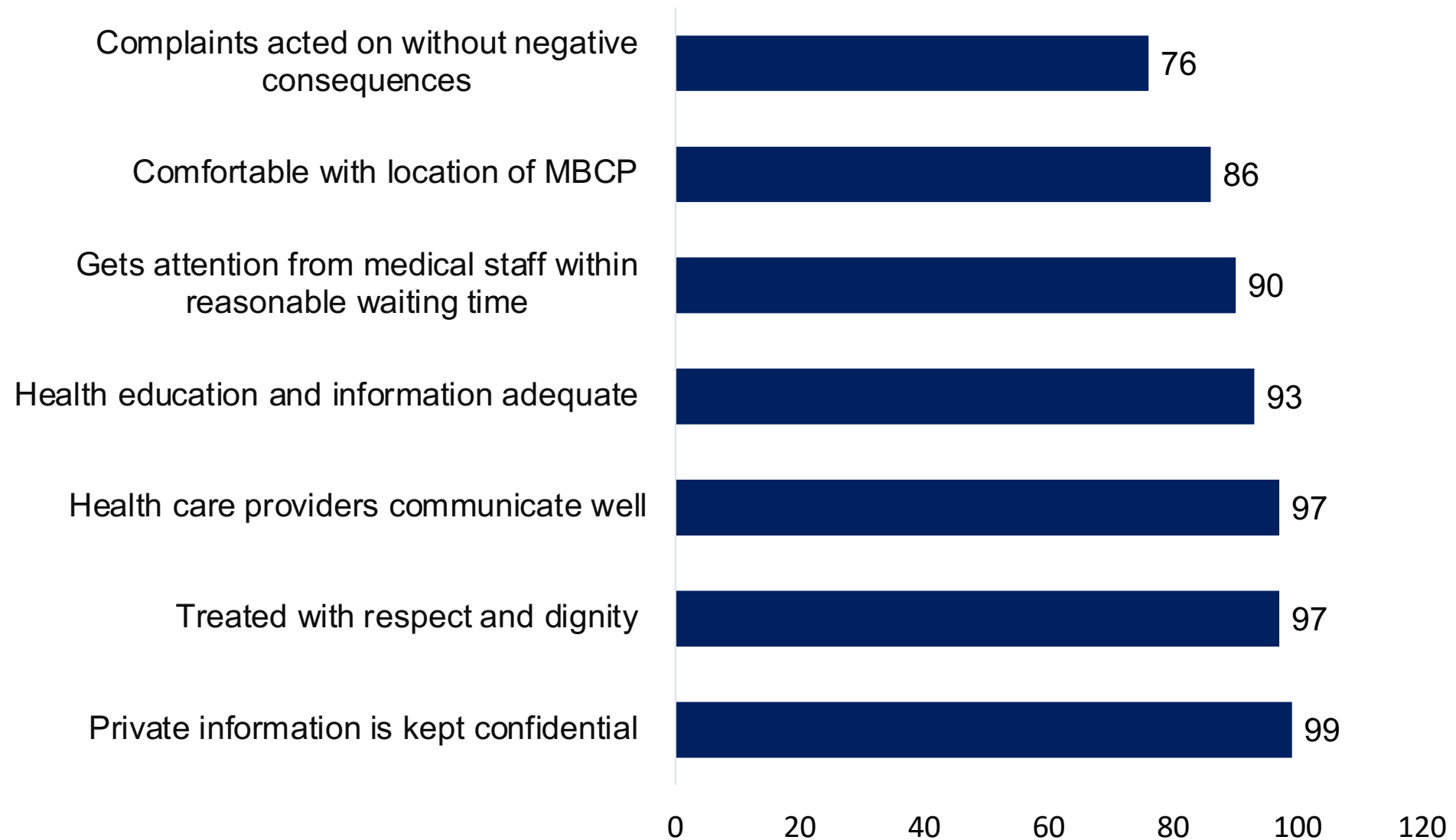
# Services offered to eMTCT mothers at MBCP: Evaluation findings ; 2017



# Services offered to HEI at MBCP



# Services satisfaction by Recipients of care



# Innovations for better quality MBCP

The MBCP is an entry point to several interventions aimed at improving the quantity and quality of service delivered to HIV positive pregnant and lactating women. Interventions introduced through the care point over the last 5 years include:

- **BBMB**
- **EMTCT Family-Connect**
- **Birth Cohort Monitoring**
- **EID/VL Point Of Care (POC) Testing**

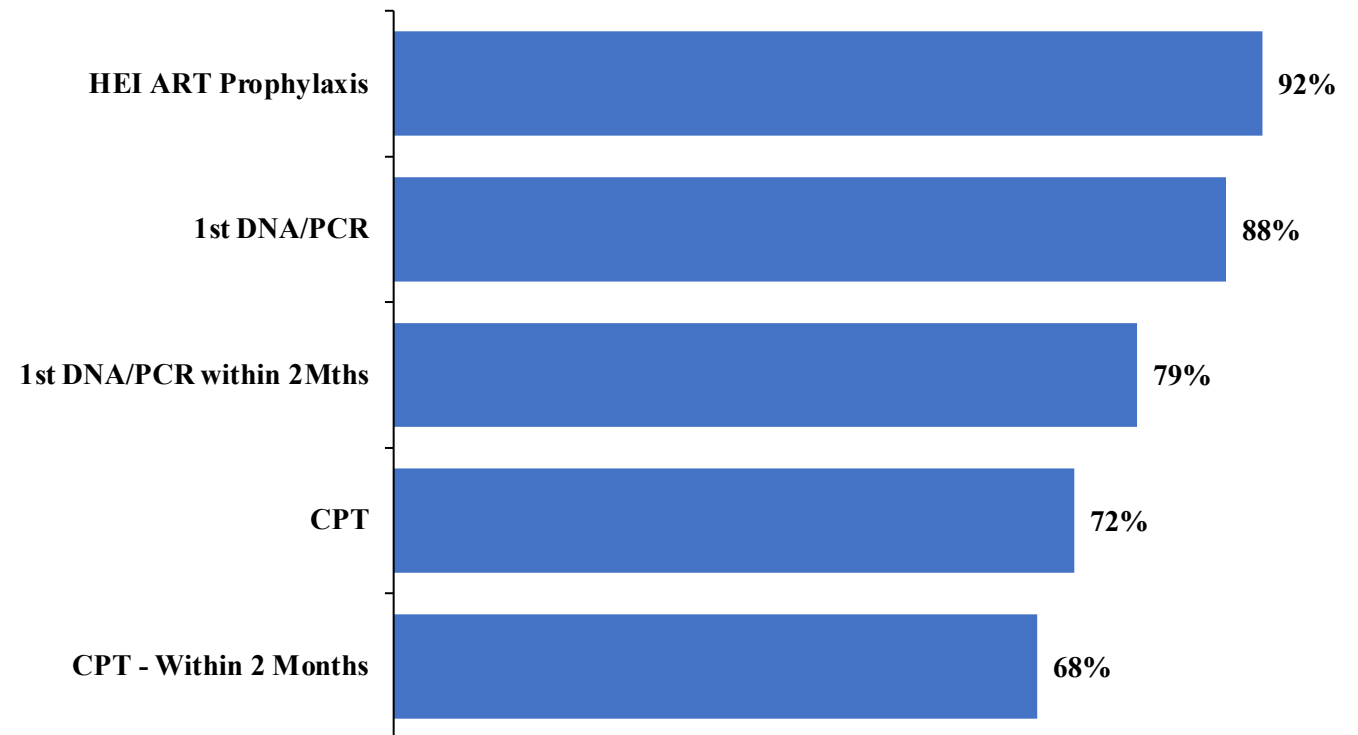
Also, the MBCP is an entry point for EMTCT Quality Assurance and technical capacity-building activities including:

- **Support supervision**
- **Mentorship**
- **Trainings**

# MBCP & EMTCT Service Coverage/Retention

- Progressively reduced the HEI ART prophylaxis gap by more than 20% with about 35% of the Nevirapine prophylaxis initiated for the first time at the MBCP)
- HEI 1<sup>st</sup> DNA/PCR testing, as well as Septrin coverage gaps (Overall and Within 2 Months have also improved over time
- The Graph on the right shows HEIs' services coverage, FY 2021/22

HEI Services Coverage (Estimated Need, N = 83,613 - Spectrum Estimates, 2020)



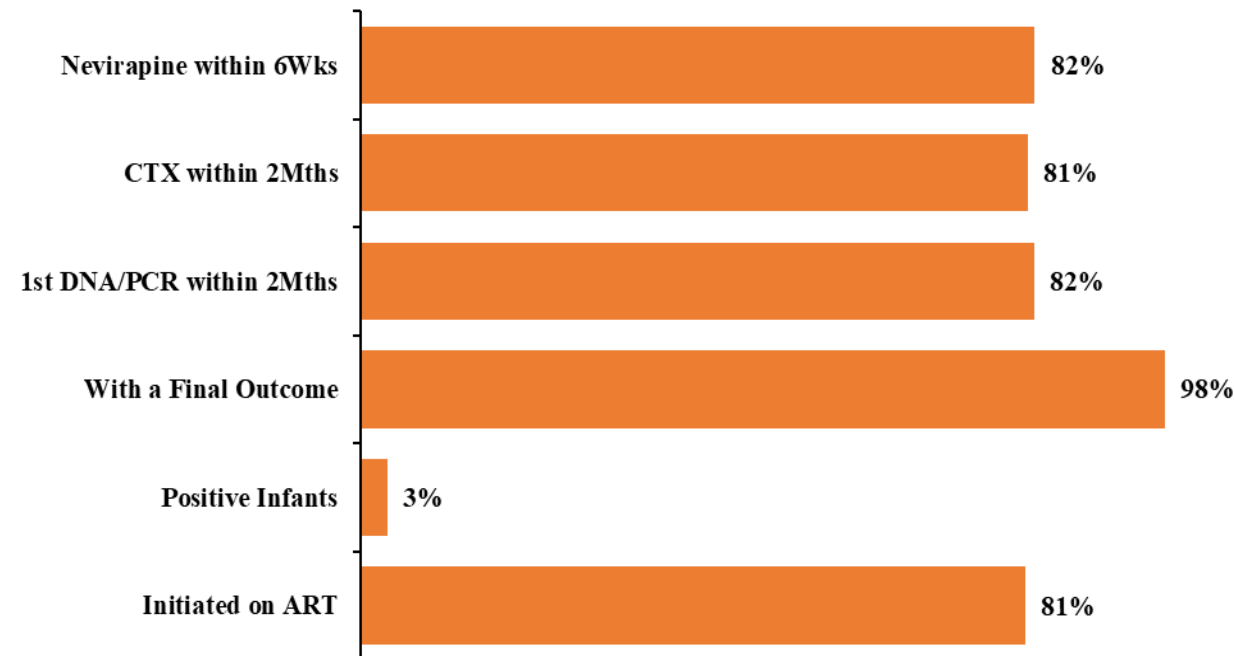
# MBCP & HEI Quality Of Care

The PMTCT program in 2016 introduced Birth Cohort Monitoring for HEIs to:

- **Improve the timeliness of services delivered to HEIs**
- **Retain Mother Baby Pairs throughout the Mother-Child HIV Transmission risk period**
- **Account for all HEIs identified in the public health system**
- **Link all HIV positive infants identified to lifelong ART for reduced morbidity and mortality**

Since the introduction, the country has registered tremendous improvements in the Quality of Care (QoC) for the HEIs in the Birth Cohorts. By the end of the Jul. 2021 – Jun. 2022 FY, the positivity had reduced to less than 5% (3%).

The Graph below shows the QoC for the HEIs registered in the Cohorts 24 months prior to Jul. 2021 to Jun. 2022 (N = 79,476)





# Lessons and opportunities

---

- **MBCP : Promotes and Strengthens service integration HIV and MCH**
- **As an entry point for piloting and adopting innovations/interventions for EMTCT, and MCH**
- Proven results: Sustained 95% maternal ART coverage for over 5 years
- About 30% improvement in the proportion of EMTCT women alive & on ART at 12 months following treatment initiation

*Thank  
you*

