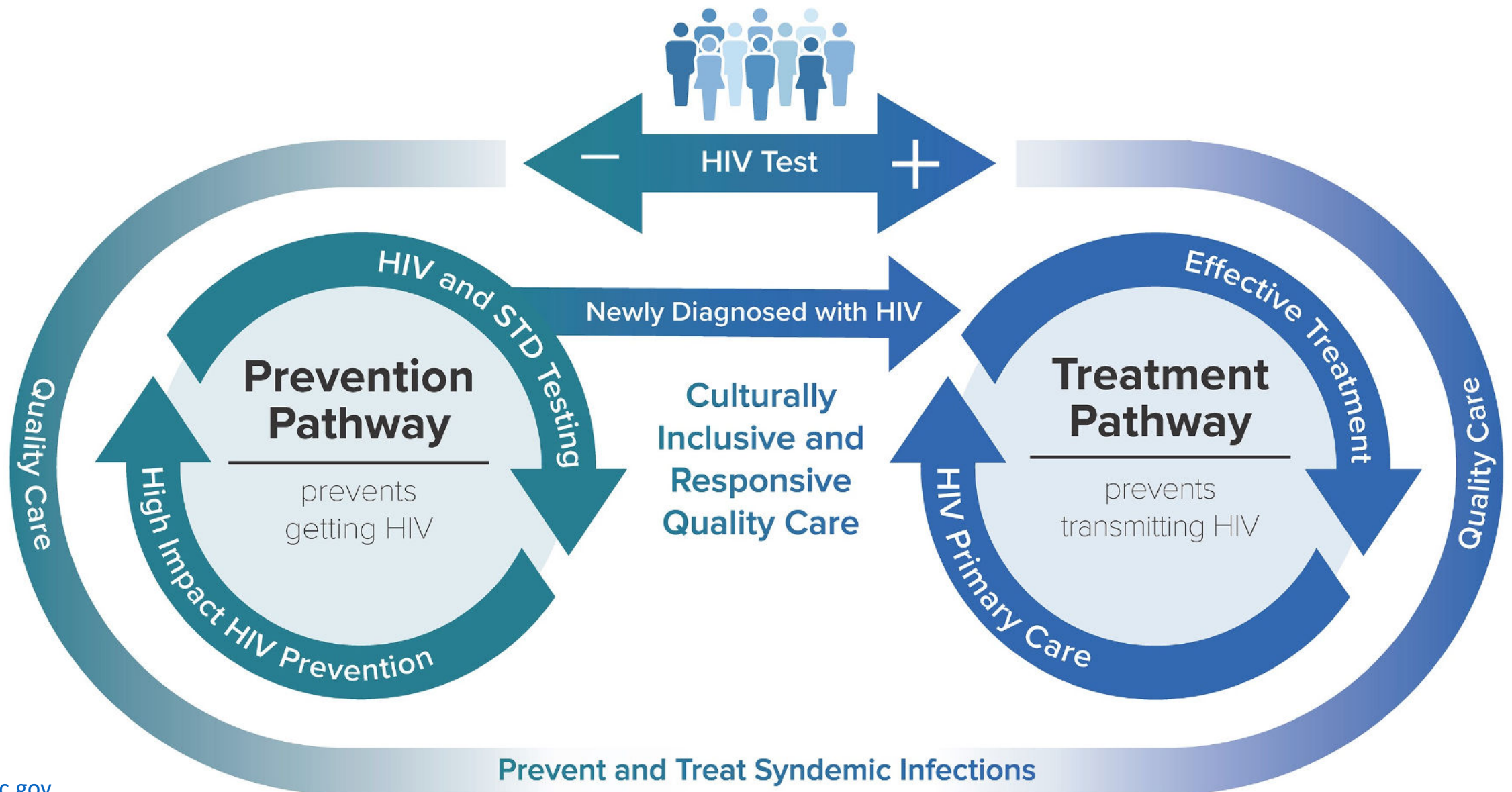


Differentiated HIV Testing & Linkage Services

- As we move into CQUIN 2.0, the network will increasingly focus on differentiated service delivery **across the HIV cascade**
- We are expanding network stakeholder to include leaders of national testing and linkage programs and recipients of testing services
- We are also pleased to be collaborating with the Clinton Health Access Initiative (CHAI) and the South-to-South Learning Network, who bring their expertise to this important topic

Testing is the entryway to **status neutral HIV services**



Strategic Planning for dHTS – many decisions!

Strategic Model Mix:

- Voluntary testing and counseling
- Provider-initiated testing and counseling
- HIV self-testing
- Index testing of biological children
- Index testing of partners
- Social network-based HIV testing services








Optimizing HIV testing:

- Three-test algorithms
- Verification testing prior to ART initiation
- Dual HIV/syphilis testing for priority groups
- Early infant diagnosis testing algorithms
- Repeat testing recommendations
- Integration of HTS with other services



www.differentiatedservicedelivery.org

Differentiated Testing and Linkage Services

	 MOBILIZING	 TESTING	 LINKING
 WHEN	Time of day and frequency	Time of day and frequency	Time period for linking and frequency of tracing
 WHERE	Location of mobilization activities	Health facility Non-health facility Community	Location of linkage activities
 WHO	Who does the mobilization?	Who does the HIV testing?	Who supports linkage to prevention? Who supports linkage to ART initiation?
 WHAT	For HIV testing alone or with other services	For HIV testing alone or with other services	Prevention: SMS/phone Community-based tracing
			ART initiation: SMS/phone Community-based tracing

www.differentiatedservicedelivery.org

Differentiated HIV Testing & Linkage Services

- This session will introduce CQUIN's new capability maturity model for differentiated HTS, and lessons learned during the pilot phase
- The dHTS parallel session later today will showcase case studies from multiple CQUIN partner countries, exploring:
 - HIV case identification and linkage in low HIV-prevalence countries
 - Decentralizing HTS to reach key populations
 - Linkage from testing to prevention
 - Facility-based HIV self testing
 - Data for HTS