

FP metrics among AW, MW, and WLHIV- progress, challenges, and opportunities

Tugwell Chadywanembwa, FP 2030

16 April 2024

Integrating non-HIV Services into HIV Programs

April 15-18, 2024 | Nairobi, Kenya



FP2030: A Global Family Planning Partnership



Outline

- **FP 2030 Background**
- **FP indicators in CQUIN countries**
- **Challenges**
- **Opportunities**

FP2030 is the only global partnership
centered solely on family planning.

FP»2030



THE
CQUIN
NETWORK

Vision Framework

Vision Tagline

Working together for a future where women and girls everywhere have the freedom and ability to lead healthy lives, make their own informed decisions about using contraception and having children, and participate as equals in society and its development.

The change we wish in the world is ...

Voluntary modern contraceptive use by everyone who wants it achieved through individuals' informed choice and agency, responsive and sustainable systems providing a range of contraceptives, and a supportive policy environment.

To realize the vision, countries and partners will...

Expand the Narrative
and Shape the Policy
Agenda

Drive Data and
Evidence-Informed
Decision Making

Increase, Diversify,
and Efficiently Use
Financing

Transform Social and
Gender Norms

Improve System
Responsiveness to
Individual Rights and
Needs

Our commitments, decisions, and efforts are guided by...

- **Voluntary, person-centered, rights-based approaches, with equity at the core**
- **Empowering women and girls and engaging men, boys, and communities**
- **Building intentional and equitable partnerships with adolescents, youth, and marginalized populations to meet their needs, including for accurate and disaggregated data collection and use**
- **Country-led global partnerships, with shared learning and mutual accountability for commitments and results**



What does FP2030 do?

Mobilize and drive commitments at all levels – community to global

Collect and disseminate data: We are a one-stop shop for synthesized family planning data and analysis.

Hold decision makers accountable: We collaborate with advocates at all levels to advance accountability

Collaborate and convene: With our global support network of connections, we get the right people together at the right time to drive the most significant progress.

FP indicators in CQUIN Countries

FP»2030



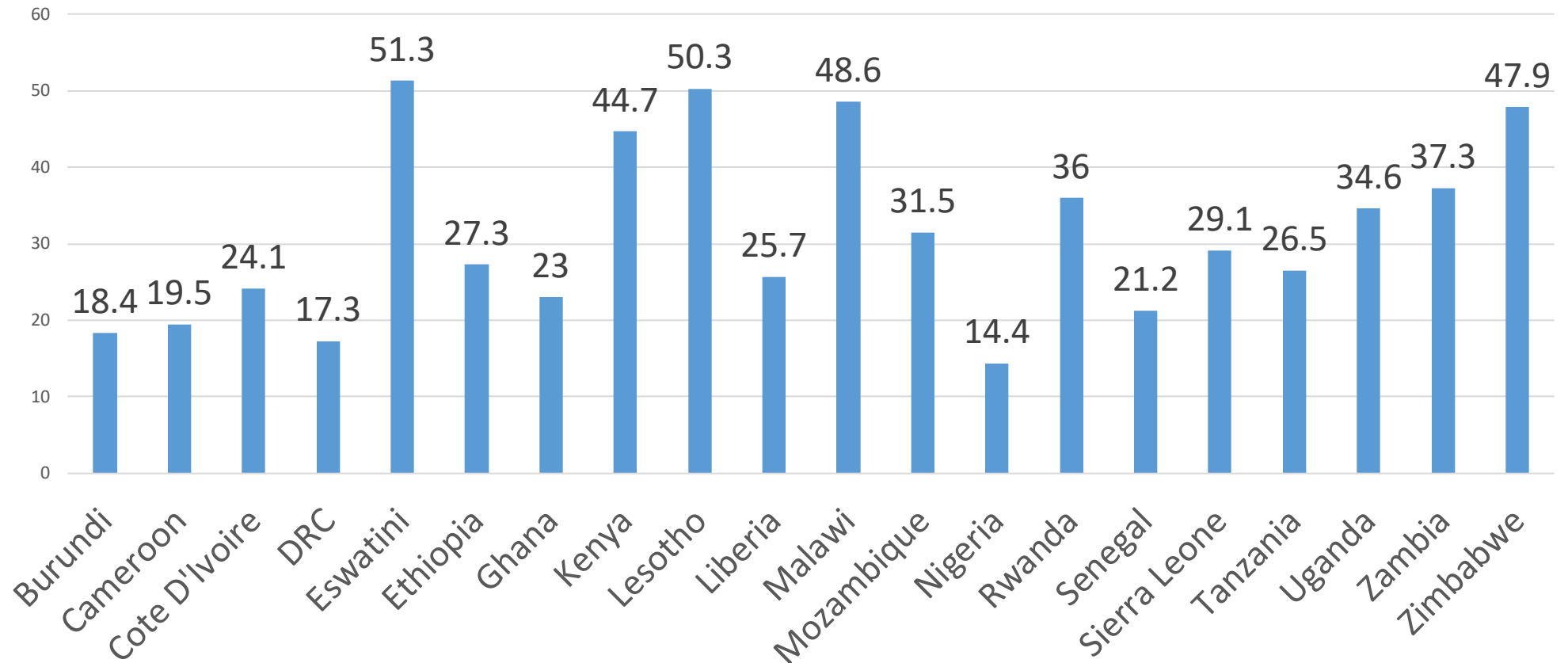
THE
CQUIN
NETWORK

Indicator Definitions

- **AW**-all women of reproductive age (15-49) years
- **MW**-married and in-union women of reproductive age
- **Modern Method**: female sterilization, male sterilization, Intrauterine Device (IUD), injectable, implants, pill, emergency contraception, male condom, female condom, other vaginal methods (foam, jellies/spermicide, diaphragm) Standard Days Method (SDM), Lactational Amenorrhea Method (LAM)
- **mCPR**- The percentage of all women of reproductive age (women 15-49 years of age) who are using (or report their partner is using) a modern contraceptive method in a specific year at a particular point in time.
- **Unmet Need**- The percentage of fecund women of reproductive age who want no more children or to postpone having the next child but are not using a contraceptive method. In addition, women who are currently using a traditional method of family planning and women who are pregnant with or postpartum amenorrheic after an unintended pregnancy are also added to the estimate of women who have an unmet need for modern contraception.
- **Demand Satisfied**- The percentage of women of reproductive age who want no more children or to postpone childbearing who are currently using (or their partners are using) a modern contraceptive method.

mCPR among AW in 20 CQUIN Countries

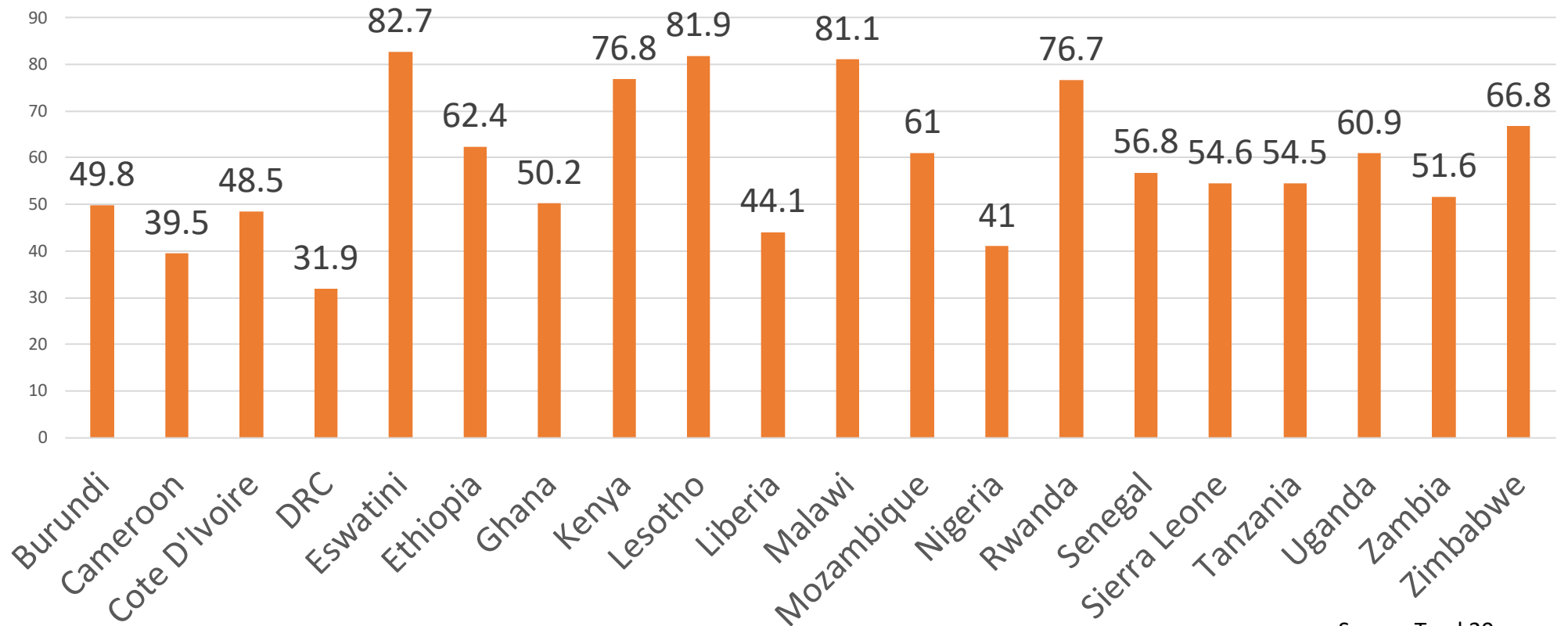
mCPR among AW in CQUIN Countries



Source:Track20

mCPR among MW in 20 CQUIN Countries

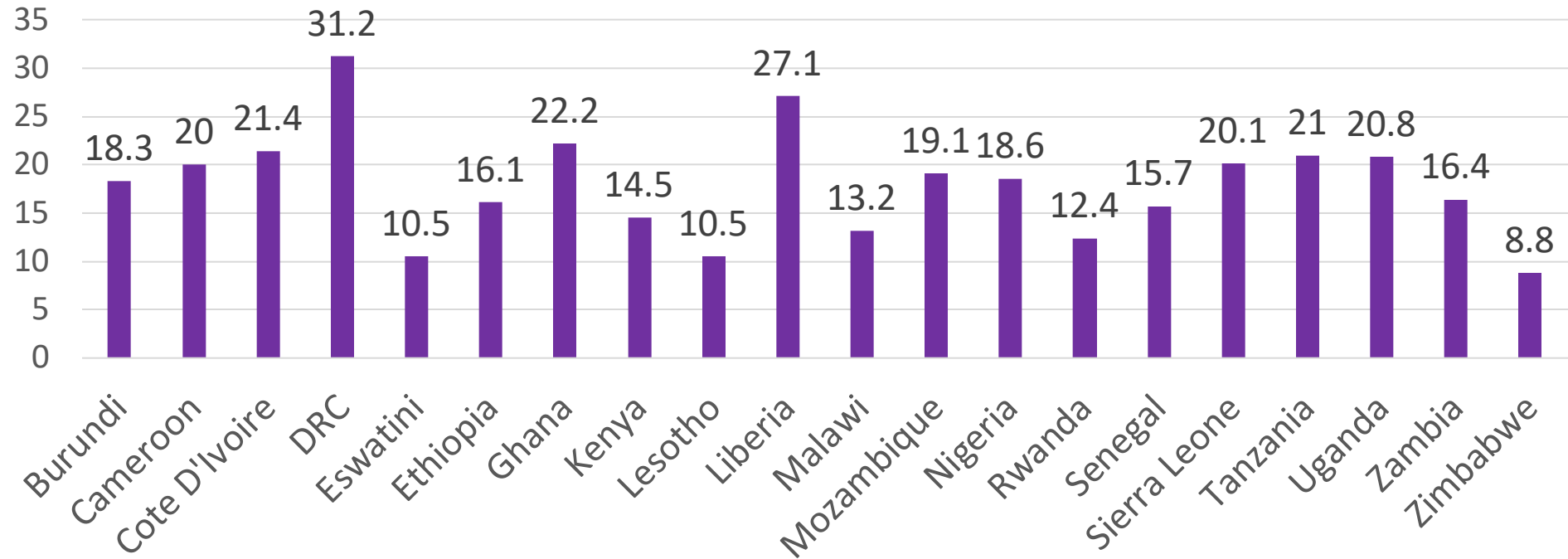
mCPR among MW in CQUIN Countries



Source:Track20

Unmet Need for Modern Methods among AW in CQUIN Countries

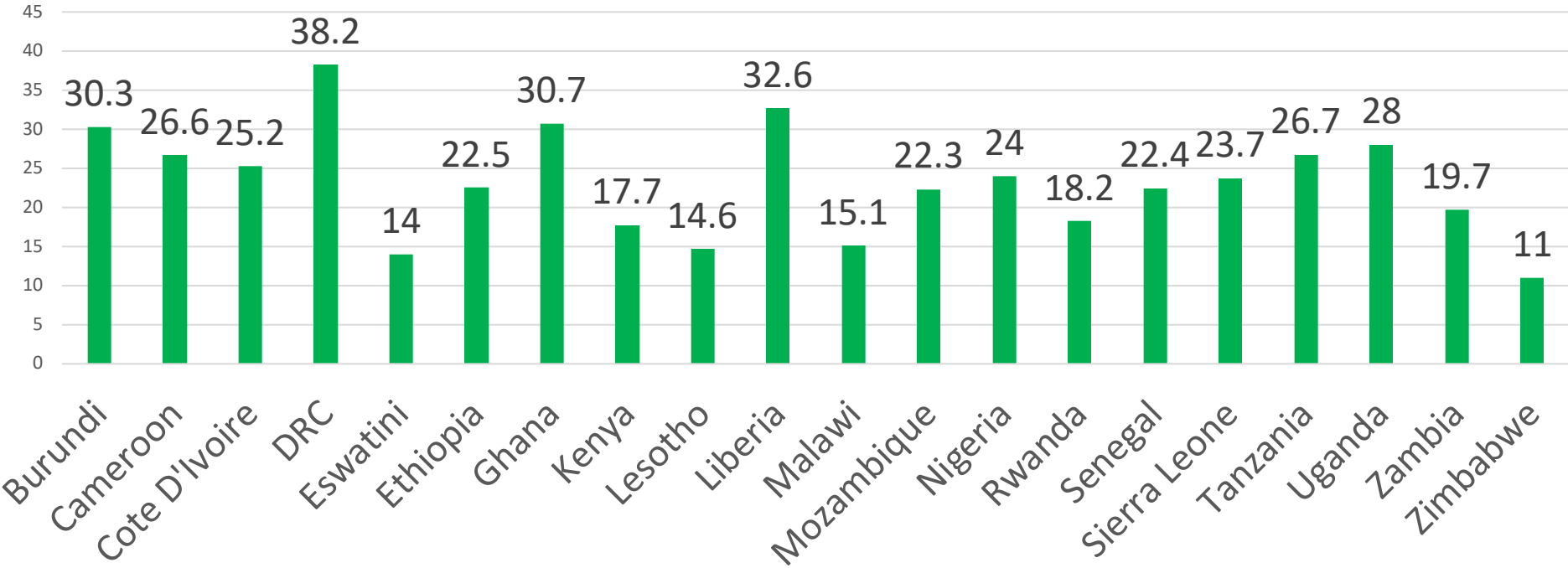
Unmet Need for Modern Methods among AW in CQUIN Countries



Source:Track20

Unmet Need for Modern Methods among MW in CQUIN Countries

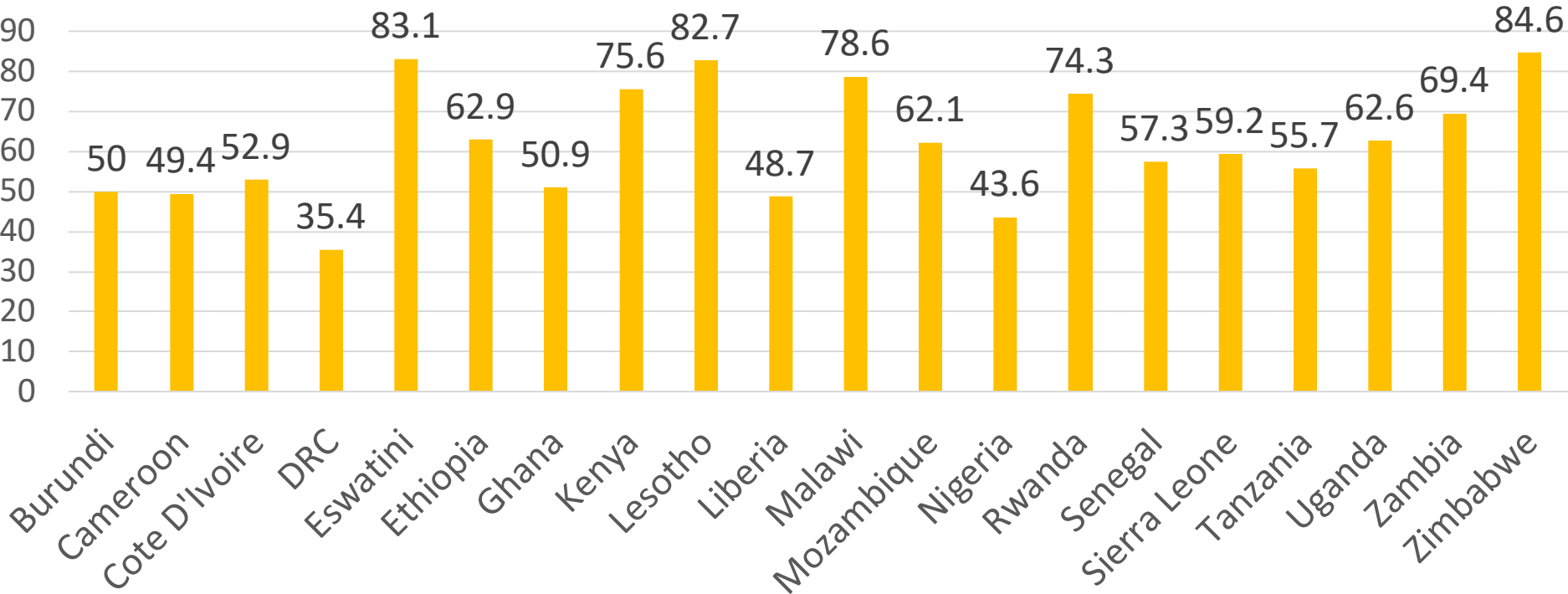
Unmet Need for Modern Methods among MW in CQUIN Countries



Source:Track20

Demand Satisfied with a Modern Method among AW in CQUIN Countries

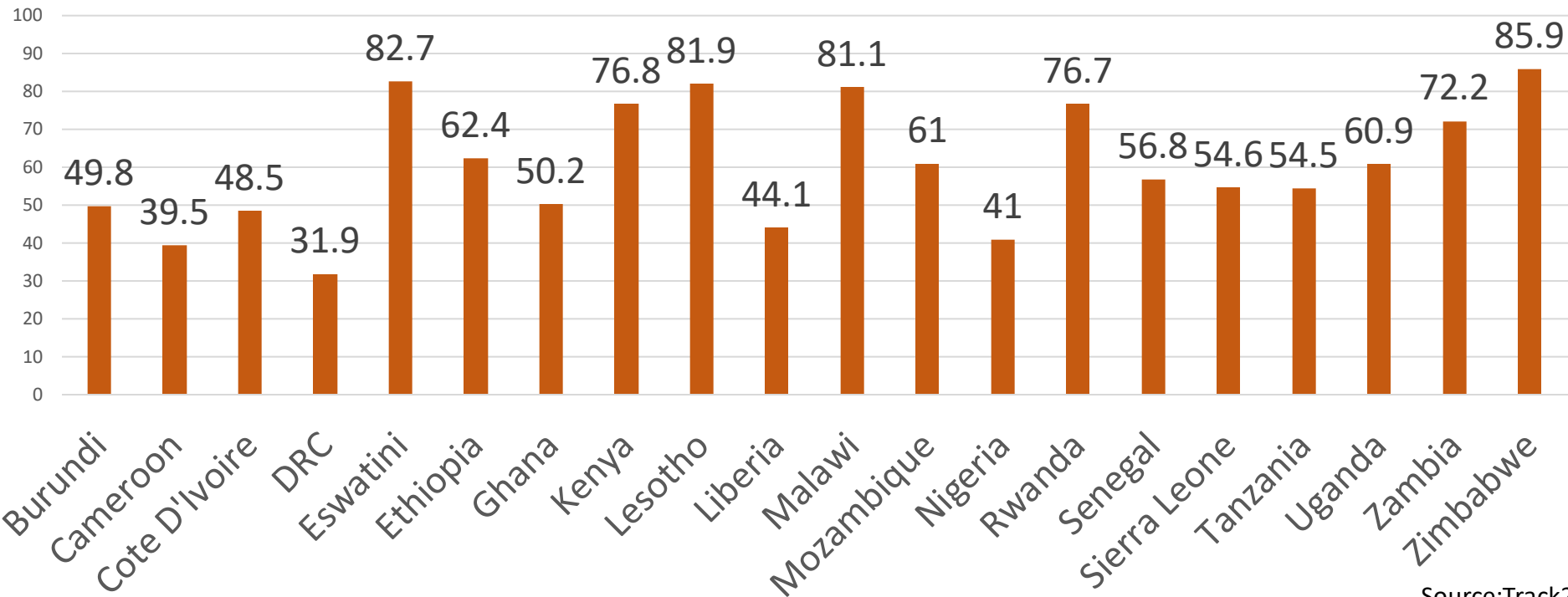
Demand Satisfied with a Modern Method among AW in CQUIN Countries



Source:Track20

Demand Satisfied with a Modern Method among MW in CQUIN Countries

Demand Satisfied with a Modern Method among MW in CQUIN Countries



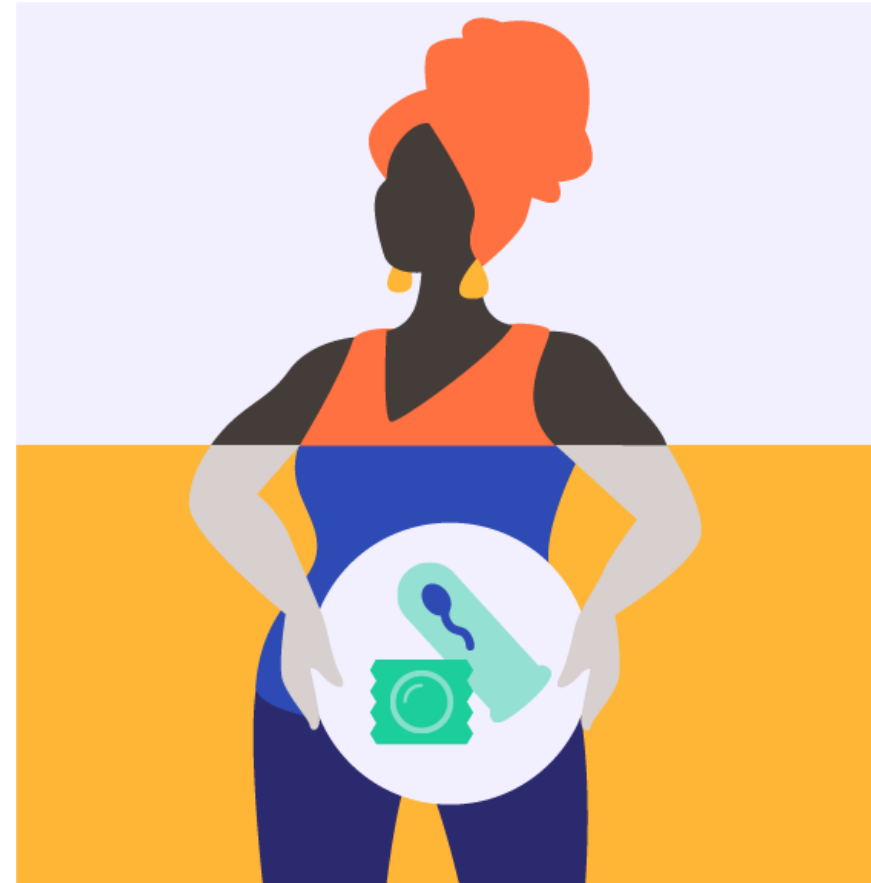
Source:Track20

Challenges & Opportunities

- Lack of FP metrics among WLHIV
- Countries to consider FP2030 Commitments when determining FP targets for WLHIV
- The Global FP2030 PME Working can deliberate on possible indicators to track
- Possible opportunity to have FP metrics among WLHIV through a coordinated delivery of integrated services
- Availability of CQUIN partners
- Country FP2030 commitments

Family Planning & HIV Integration

- Working on an advocacy agenda with CASPR partners
- High Impact Practice approach
- Collaborate with countries to develop integration indicators
- Collaboration with CQUIN
- Consider indicators on the global family planning measurement framework



FP2030 Newsletters

Available in **English, French, and Spanish**

Key updates on the FP2030 Support Network and **global family planning field**

Dozens of **new resources** shared each month

Sign up for newsletters:

www.fp2030.org/#subscribe

www.fp2030.org/fr#subscribe

www.fp2030.org/es#subscribe





FP >> 2030

PHOTO CREDIT: Juan Arredondo/Getty Images/Images of Empowerment

Questions and discussion



Thank You!

