

SOP for screening and management of NCDs among PLHIV

CLIFF MOSE - EGPAF

CQUIN Integrating non-HIV Services into HIV Programs Meeting

April 15-18, 2024 | Nairobi, Kenya



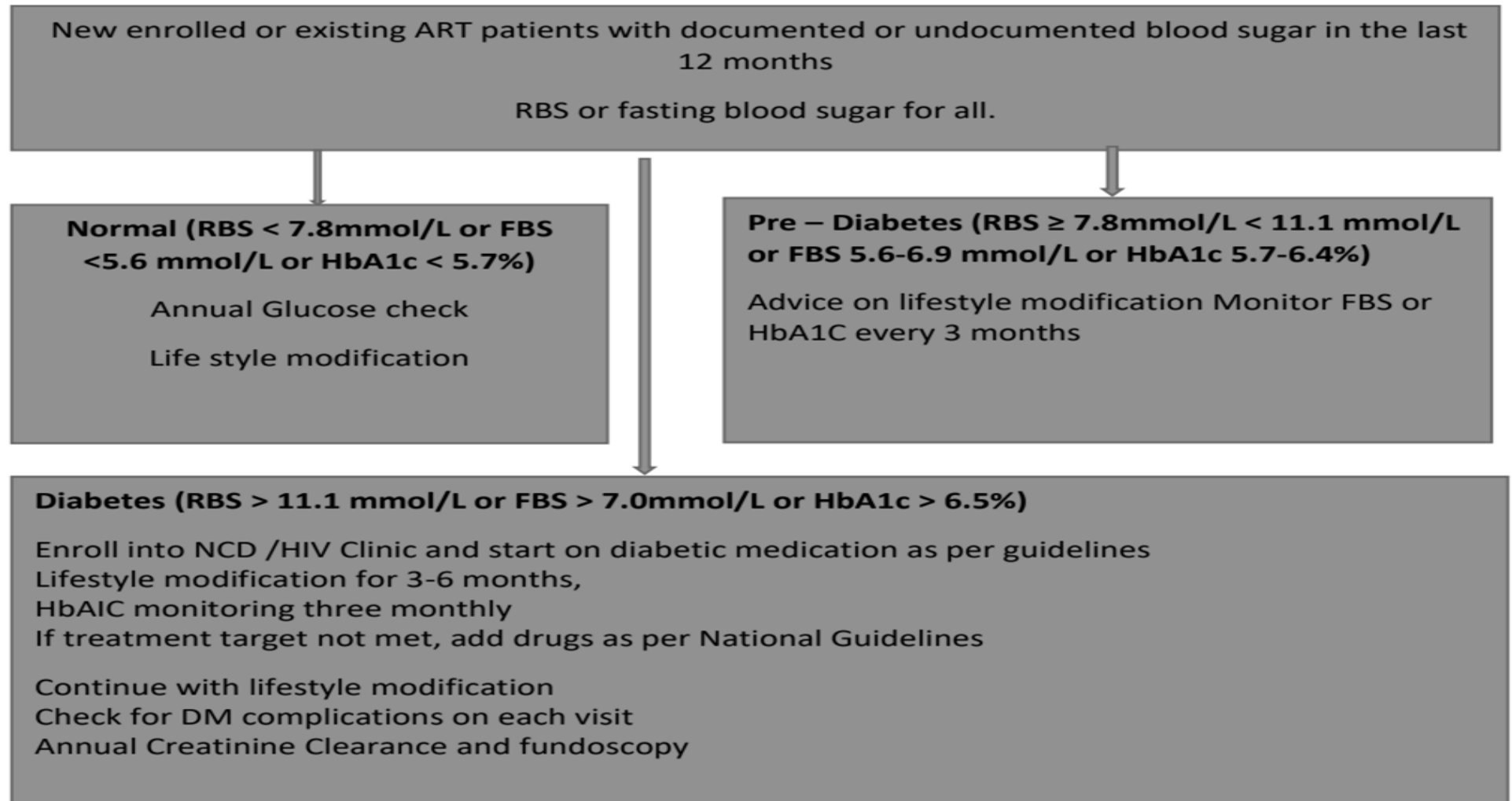
INTRODUCTION

- To improve screening and management of NCDs among PLHIV, we developed an SOP that acts as a reference and clinical decision support tool for nurses and clinicians. This was necessitated by the low screening rates in supported facilities
- This SOP;
 - Guides screening and management of NCD in HIV clinics including medical equipment and supplies needed
 - It gives considerations to be made in organizing patient flow and integration models at the facility and community levels
 - It borrows from existing national guidelines for cardiovascular disease management and provides reference values and decision points in patient care management
- The purpose of the SOP: To provide guidance on screening, diagnosis and management of diabetes and hypertension among PLHIV

NCD Screening and Management Requirements

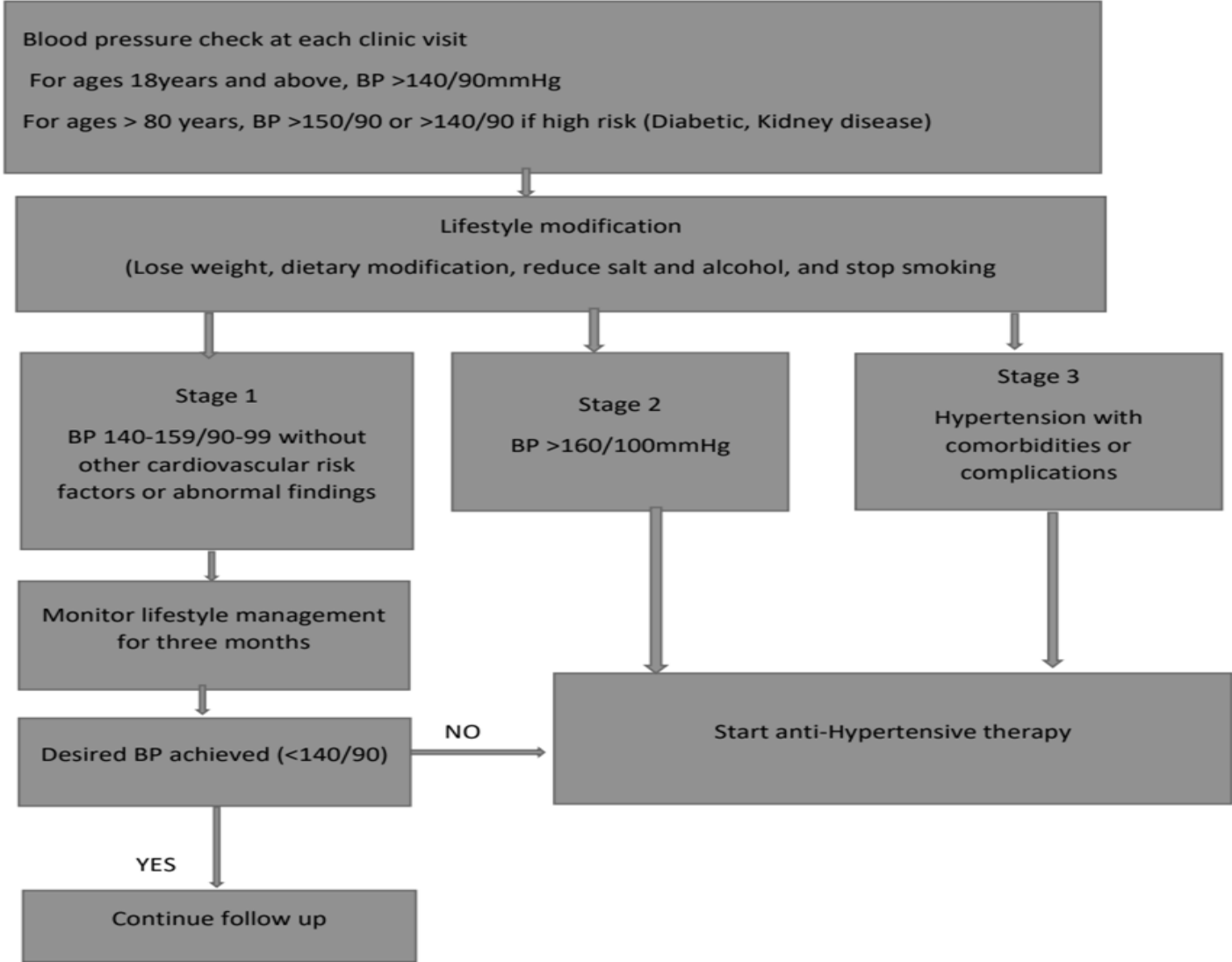
- Weighing scales
- Height meter
- BP machines
- BMI charts
- Glucometer and strips
- DM/HTN screening register
- DM/HTN management register
- DM/HTN DAR
- Kenya EMR
- Pulse oximeter
- Appointment management system
- DM/HTN monthly reporting tool

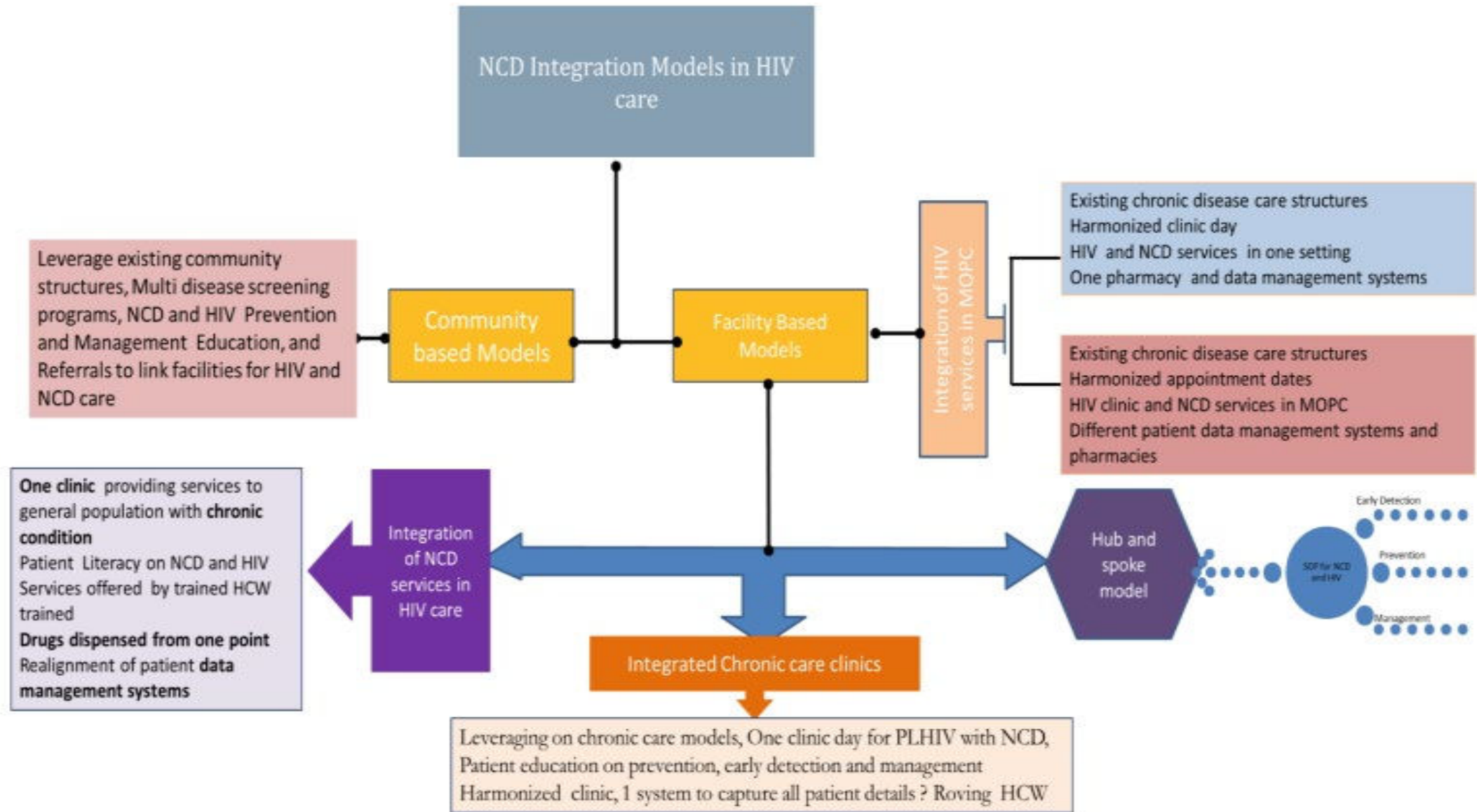
Screening, Diagnosis and Management of Prediabetes & Diabetes among PLHIV



Source: Kenya ART guideline 2022

Screening, Diagnosis and Management of hypertension among PLHIV





Source: Kenya National Guidelines for Cardiovascular disease Management – 2018

Process

1. Registration desk and /or waiting bay

- Patient education on NCD prevention, early detection and management
- Health talks on Lifestyle modification
- Smoking and alcohol cessation
- Dietary changes, weight loss and physical activity.
- Self-Care and NHIF information.

2. Triage and /or nutrition desk

- Vital signs -Blood pressure, temperature, pulse and blood Oxygen level
- Anthropometric Measurements- Height, Weight, BMI and Waist circumference
- Nutrition assessment, categorization, counselling and management.
- Insurance/NHIF Inquiry.

Cont...

3. Adherence Desk

- Treatment Preparation- HIV
- Treatment Literacy – NCD and HIV
- Social and economic evaluation.
- Behavior assessment smoking, drinking and other substance use evaluation
- Education on;
 - Medication adherence
 - Cost of investigations and medication
 - Appointment management. Dietary changes, weight loss and physical activity.

Cont...

4. Clinical Services

- Clinical History and Examination.
- Standard Package of Care for PLHIV taking control of the HIV/AIDS epidemic 4
- Patient literacy on HIV, NCDs, self-care and cost of treatment.
- Mental health assessment
- Cancer screening
- Treatment and follow up for DM/Hypertension, and/ or referral for further management accordingly. .

Cont...

5. Laboratory Investigations

- Blood Glucose (RBS, FBS, HbA1c)
- Renal - Urinalysis, Creatinine Levels
- Plasma lipid profiles
- FHG
- CD4 and Viral load
- Radiology: Chest Xray, ECG, Echocardiogram and Mammograms.
- PSA levels
- PAP smear



Elizabeth Glaser
Pediatric AIDS Foundation
Fighting for an AIDS-free generation

Thank You!

