

# Linking Men To Post HIV Test Services in Mozambique

**Dr. Isabel Sathane**

Ministry Of Health, Mozambique



# Outline

- Background
- The National Approach to Improving Linkage to Services for Men
- Challenges
- Successes
- Next Steps

# Background



of adults living with HIV knew their HIV status

*INSIDA 2021*



of those who were aware of their HIV status were on ART



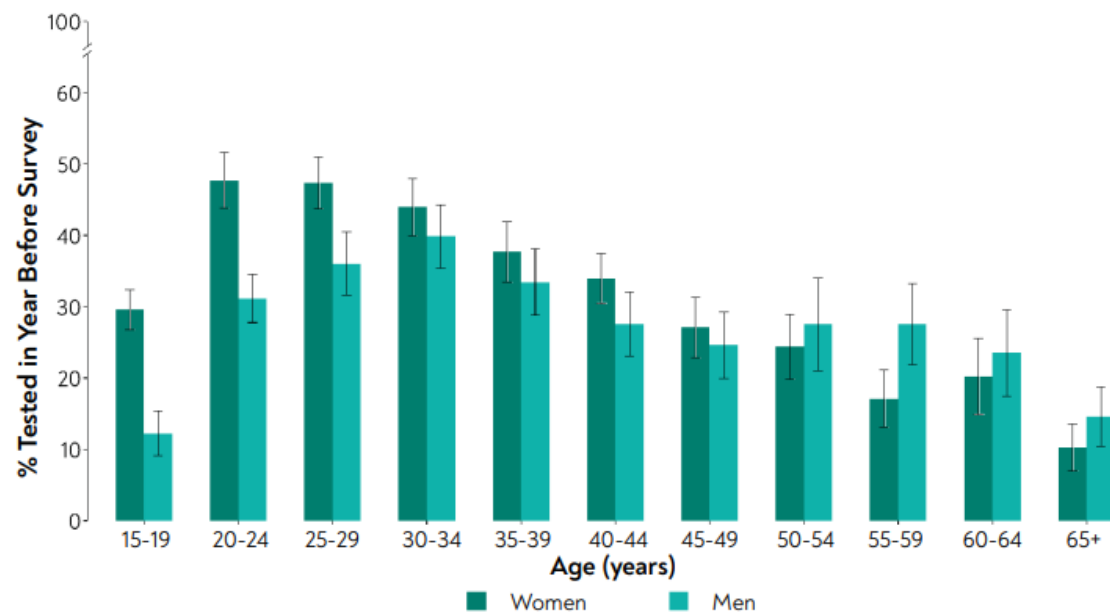
of those who were on ART had viral load suppression

- Mozambique has adopted the UNAIDS goals of 95-95-95 by 2025, which will allow the country to achieve control of the **second largest HIV epidemic** in the world.
- According to the latest population-based survey, **only 71.6% of the estimated 2.4 million PLHIV living in the country know their status**

# Background

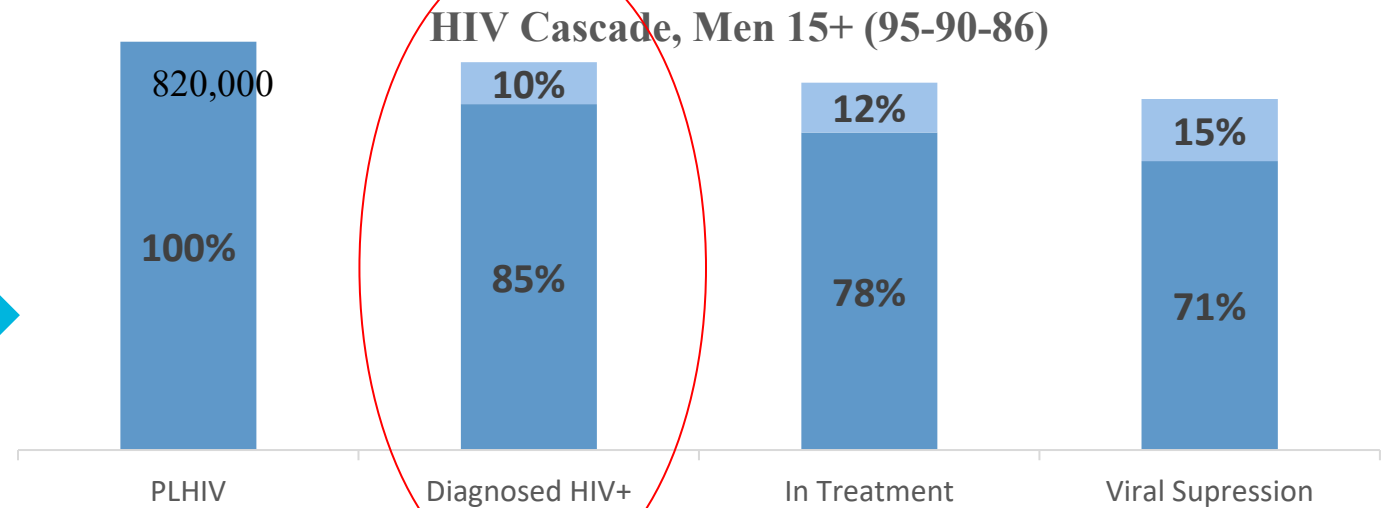
- Following HIV testing services prompt linkage to prevention and treatment is critical
- Scale-up of effective linkage strategies is essential to achieving the global 95-95-95 goals.
- Whereas linkage to care including same-day treatment initiation for all people with HIV is now routinely implemented in testing programmes, linkage to HIV prevention interventions including behavioral or biomedical strategies, for HIV-negative individuals remains sub-optimal.

**Proportion of adults who reported having received an HIV test in the 12 months before the survey by age and sex, INSIDA 2021**

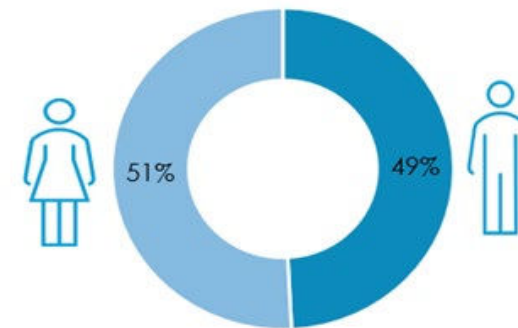


# Current HIV Epidemic Among Men

## HIV Prevalence by sex, INSIDA 2021



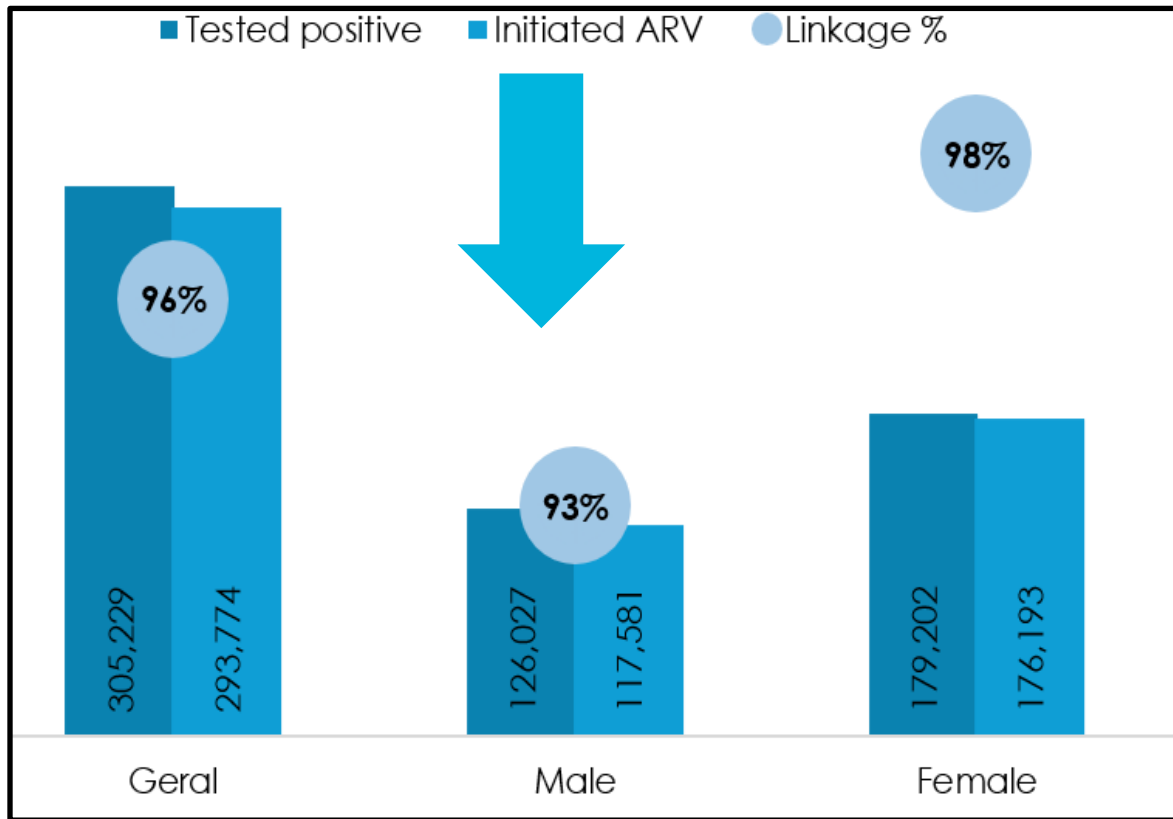
**HIV Self Testing** has been demonstrated to be an important complementary strategy for reaching men



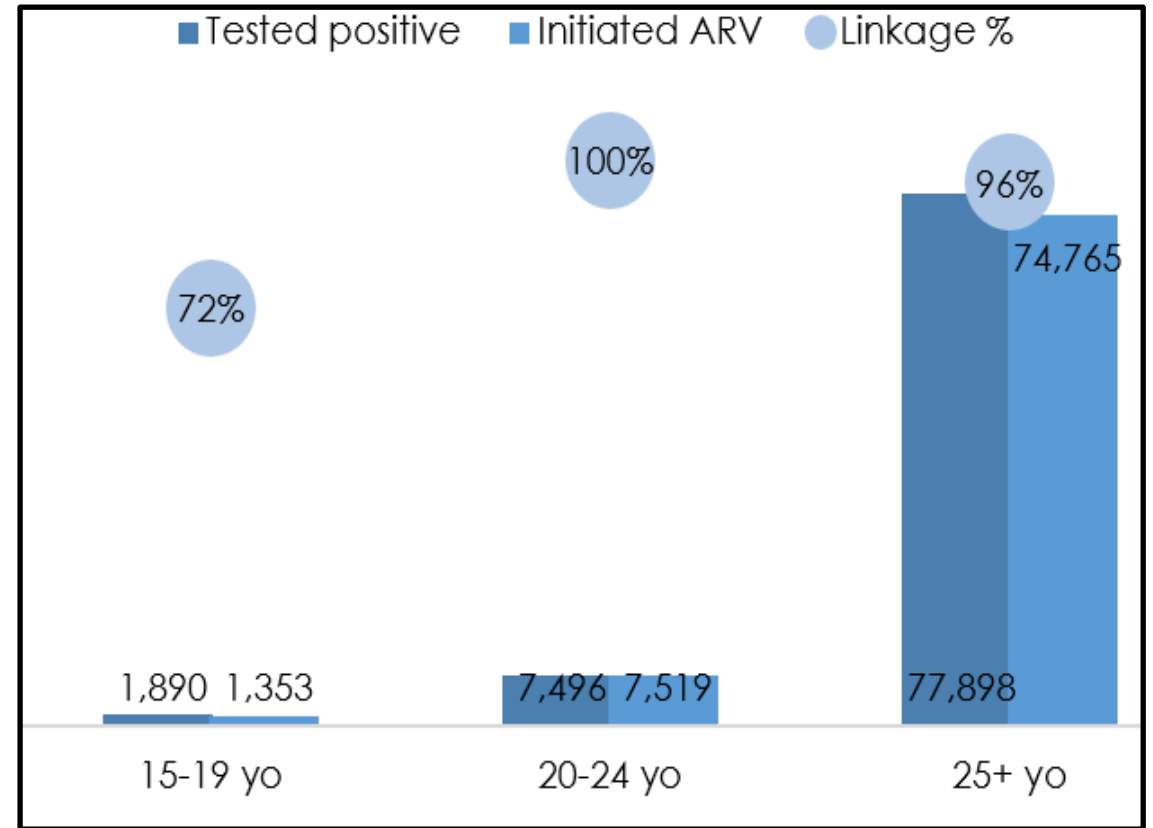
HIVST Kits distributed by sex, Jan-Dec 2023.

# Linkage to HIV Treatment Among Men

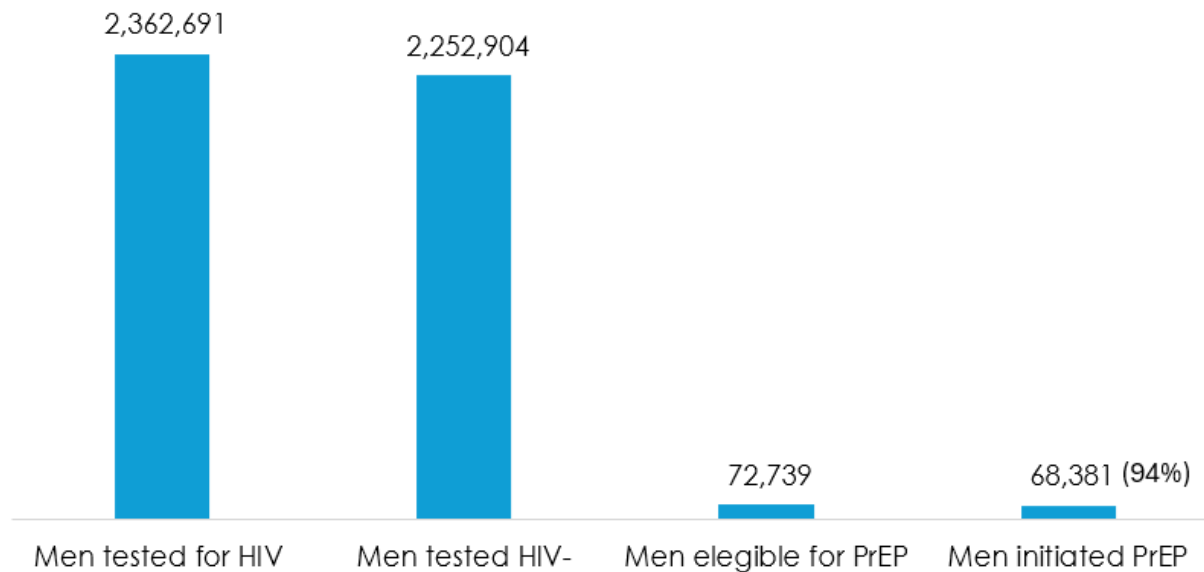
## Proxy Linkage by Sex 2023



## Proxy Linkage for Men by Age, 2023



# Access and Linkage to PrEP for Men



PrEP among Men, Jan-Dec 2023

- PrEP is offered at 560 sites (32% of all ART sites)
- There is need to strengthen linkages to HIV prevention, specific PrEP services highlighted by the 4%\* or less screening for eligibility criteria
- More efforts are required to ensure that individuals at high risk of HIV are provided with appropriate prevention services and counselling to ensure they remain negative.

# The National Approach to Improving Linkage for Men to Post HIV Testing Services



**Communication campaigns** with evaluations to understand the impact of demand creation activities and adjust strategies as needed



**Mobile brigade modality** integrated with testing and initiation of ART and PrEP at a truck or bus stop, focused to reach men



**MOH led data review monthly meetings** with the provinces focused on improving data quality



# National Approach to Increase Demand for HIV Testing Among Men

## National media campaigns for demand creation for Men HIV testing services

**Vamos todos testar**

REPÚBLICA DE MOÇAMBIQUE  
Ministério da Saúde

António Nhanala  
Activista Social  
Zambézia

TESTA LÁ

Alô Vida! 84146  
tmcel 82149 ou 1490  
PENSA \*660#  
ISAH VISÃO PARA AJUDA HUMANITÁRIA

REPÚBLICA DE MOÇAMBIQUE  
Ministério da Saúde

"Se o teu parceiro também for positivo, ambos devem manter-se em tratamento para proteger o vosso futuro e o da criança."

Alô Vida!  
PENSA \*660#  
PEPFAR  
jhpiego

REPÚBLICA DE MOÇAMBIQUE  
MINISTÉRIO DA SAÚDE

**MÊS DO TRABALHADOR**

Todos merecem ser tratados com respeito, independentemente do estado de HIV. Juntos, podemos criar um ambiente de trabalho livre de discriminação.

PEPFAR  
FUNDAÇÃO ABEL GLASER  
CONTRA O SIDA PEDIÁTRICO

Alô Vida! 84146  
tmcel 82149 ou 1490  
PENSA \*660#

# Mobile Brigades Focused on Men



## Methodology

Mapping male concentration areas: bars, markets, bus stops, night clubs, etc. at catchment areas of supported HF

### Male champions and community leaders:

- Identify eligible men for prevention services
- Fill out the catchment form (including date and location for testing services)
- Share the forms with the HTS/linkage supervisors at the HF

- ICAP lay counselors' supervisors share the complete forms with the community counselors.
- The community counselors provide HTS at the community level (date and place agreed with the client)

### Clients with a positive result

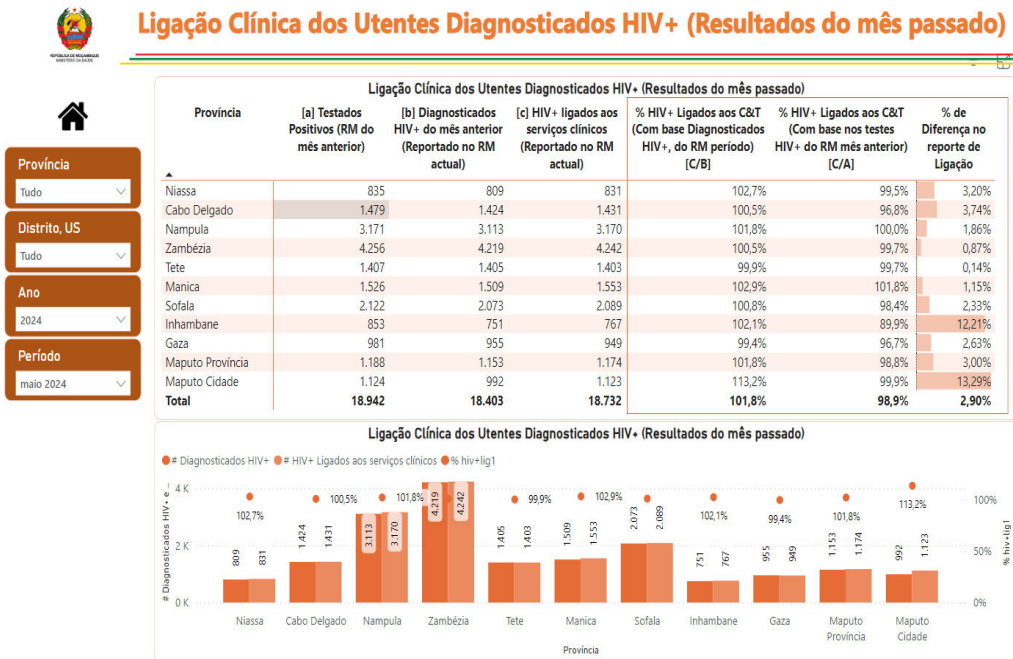
Are linked to the ART services at community level (MB/MC) or HF, according to their preference

### Clients with a negative result

Are linked to the combined prevention services (including PrEP) at community level (MB/MC) or HF, according to their preference



# Monthly Data Review Meetings



## National Dashboard, 2024

- Every month, all provinces receive feedback on data quality issues for their validation process.
- Subsequent meetings are scheduled to discuss completeness, programmatic performance and achievement of targets using the dashboard.
- National data checks and monthly calls help to increase data quality and increase opportunities to review data quality with provincial leadership while building capacity and creating a culture of data use

# Challenges

## Stigma and Health Literacy

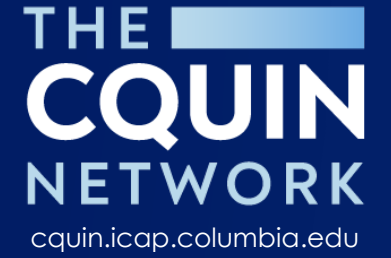
- Community resistance to participating in HTS services during mobilization process.
- Clients may experience difficulties in accepting a positive HIV test result.
- High refusal rates to initiate the PrEP due to fear to adverse effects.

## Monitoring and Evaluation Systems

- The HTS monthly report does not report linkage to C&T data disaggregated by sex and age group through national system.
- The HTS tools does not include data to capture linkage to prevention services for those who tested negative.

## Next steps

- Implementation of a pilot electronic system to monitor all cases with a positive result and linkage to services.
- Update all HTS tools to report prevention services data by age and sex disaggregates.
- Add self-test kits distribution through outreach contact guides as an alternative to conventional HIV testing.
- Include workplaces in implementation design and roll out plans.
- Empower household mobilization through adolescent and youth mentors and male champions.
- Annual data quality assessment with HTS indicators.



# Thank You!

