



Tanzania Country Updates

Dr. Emmanuel Kimario
Ministry of Health, Tanzania



CQUIN 8th Annual Meeting | December 9-13, 2024 – Johannesburg, South Africa

Presentation Outline

- **Where are we now?**

- Progress towards 95:95:95 targets
- Treatment: capability maturity model (CMM) self-staging results
- DART model mix and MMD
- AHD: CMM self-staging results
- dHTS: CMM self-staging results

- **How did we get here?**

- Stakeholder coordination and prioritization processes
- Engagement with CQUIN
- Update on Country Action Plans
- Update on Integrating Non-HIV and HIV Services
- Program sustainability efforts and opportunities
- Successes and Challenges
- **2025 Priorities**

Outline

- **Where are we now?**

- Progress towards 95:95:95 targets
- Treatment: capability maturity model (CMM) self-staging results
- DART model mix and MMD
- AHD: CMM self-staging results
- dHTS: CMM self-staging results

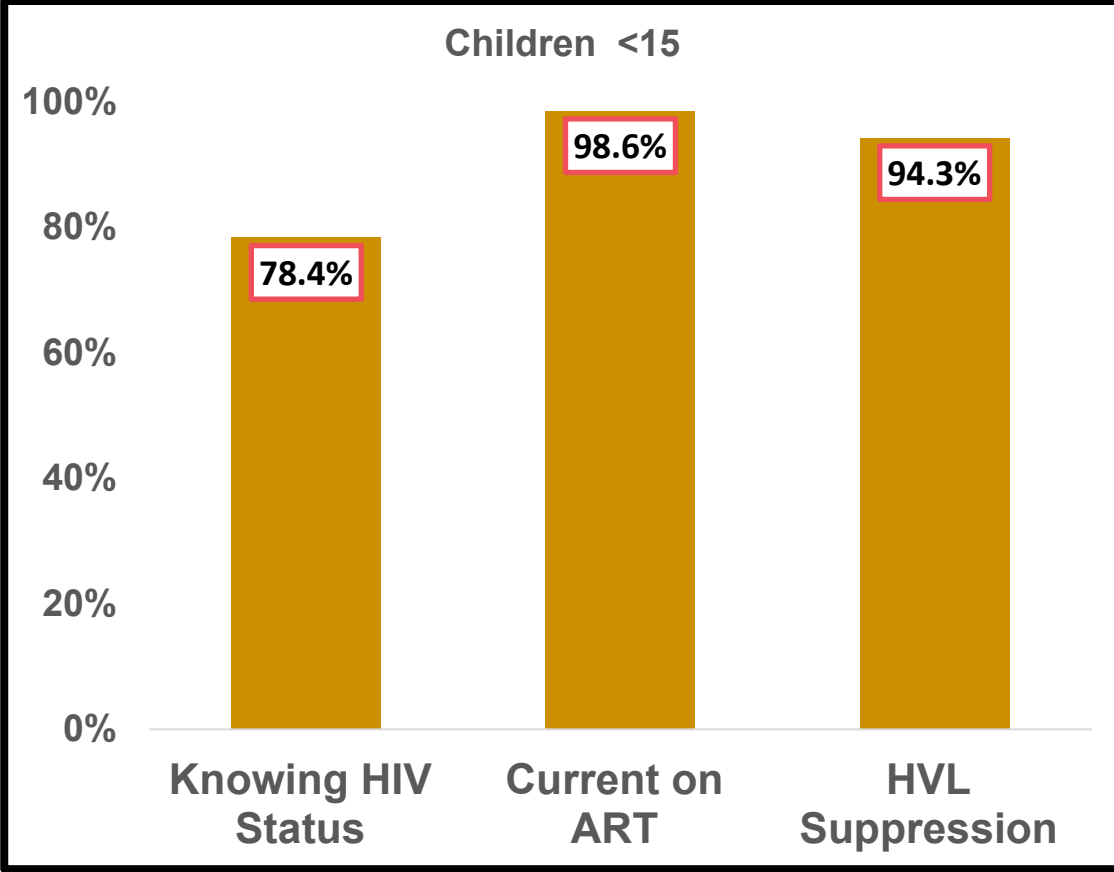
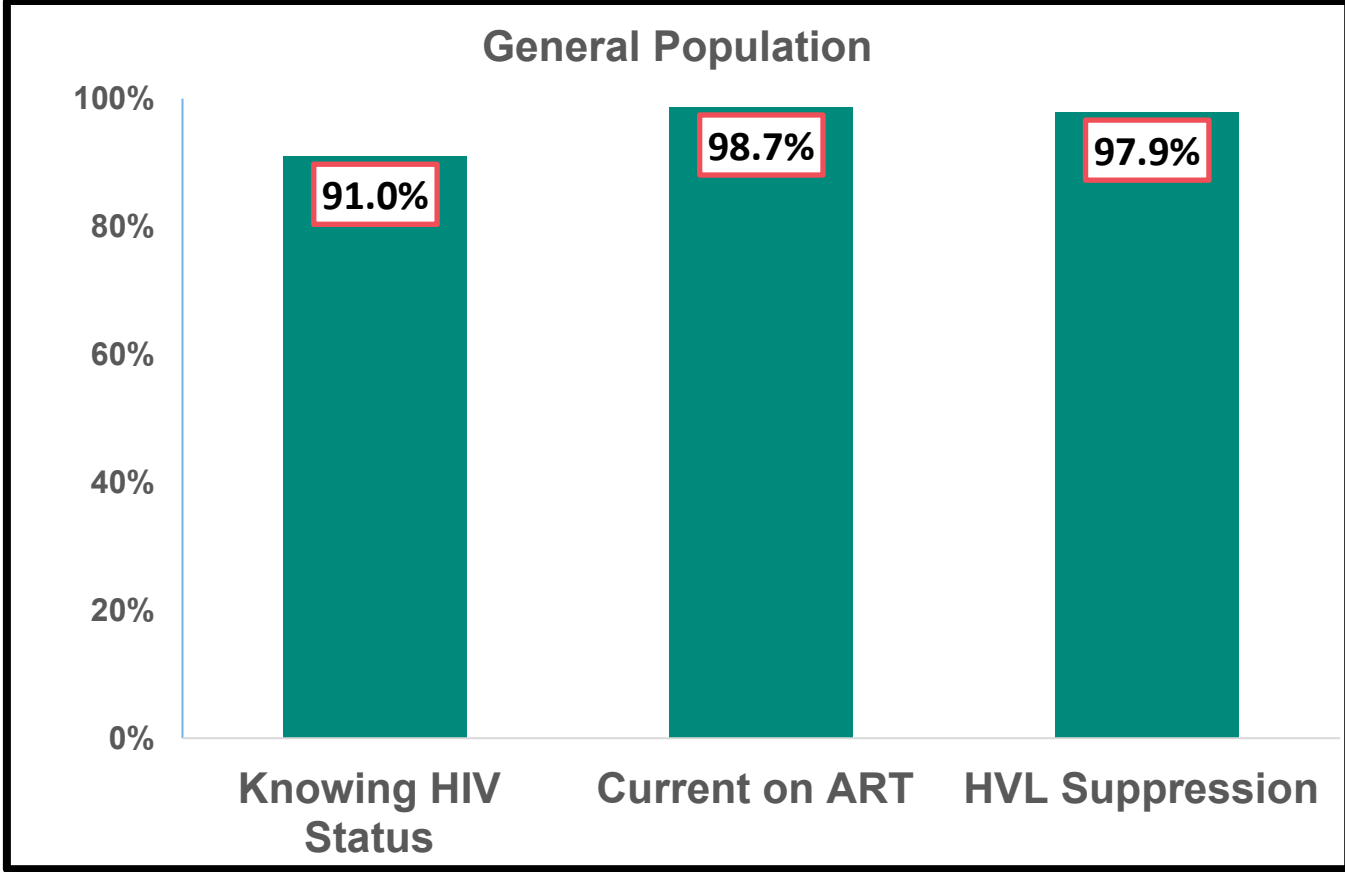
- **How did we get here?**

- Stakeholder coordination and prioritization processes
- Engagement with CQUIN
- Update on Country Action Plans
- Update on Integrating Non-HIV and HIV Services
- Program sustainability efforts and opportunities
- Successes and Challenges
- **2025 Priorities**

Progress towards the 95:95:95 targets as of Sept 2024

Targets have been attained for 2nd and 3rd 95 for GP

Source: DHIS2 2024



Tanzania Treatment CMM Results: 2024

Policies				
Guidelines				
Scale Up Plan				
Coordination			M&E	
Community		Facility Coverage	Key Populations	
Training		AHD	MCH	
Procurement	Diversity	TB/HIV	Family Planning	
Client Coverage	Impact	NCD/HIV	Quality	
Most mature		Least mature		

- Maturity attained mainly in the enabling domains (10/19 in Dark or Light Green)
- Least mature domains are integration, Quality and M&E domains

Tanzania Treatment CMM Results: Change Over Time-1

Improved in 7 domains:

- Policies
- Community
- Training
- Client coverage
- TB/HIV
- MCH and
- Quality

Stagnated in two domains:

- NCDs
- FP

Regression in 3 domains attributed to:

- M&E Systems
- Key population
- Facility Coverage

Domains	2022	2023	2024
Policies	Green	Light Green	Dark Green
Guidelines	Green	Green	Dark Green
Diversity	Light Green	Light Green	Light Green
Scale Up Plan	Orange	Green	Dark Green
Coordination	Orange	Green	Dark Green
Community	Light Green	Light Green	Dark Green
Training	Green	Green	Dark Green
M&E System	Light Green	Green	Orange
Procurement	Green	Green	Dark Green
Facility Coverage	Light Green	Yellow	Yellow
Client Coverage	Green	Green	Dark Green
AHD	Orange	Orange	Yellow
Key Populations	Red	Green	Orange
TB/HIV	Red	Red	Yellow
MCH	Red	Red	Orange
NCD/HIV	Grey	Yellow	Yellow
Family Planning	Orange	Orange	Orange
Quality	Orange	Red	Orange
Impact	Light Green	Green	Light Green

Tanzania Treatment CMM Results: Change Over Time-2

Reasons for Regression

- **M&E**

- ❖ National M&E system produces summaries of ART, retention and VL suppression rates disaggregated by facility but not community-based models

- **Key Populations**

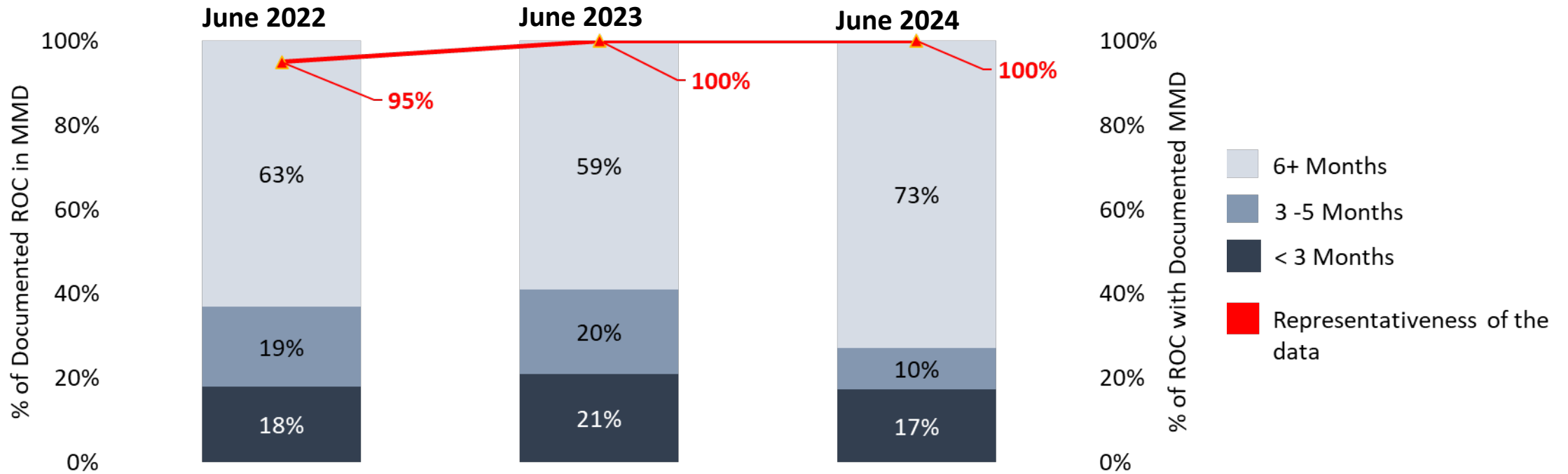
- ❖ Guidelines define a minimum package, but targets not set based on recent estimates

- **Facility Coverage**

- ❖ Newly accredited ART sites have not yet implemented DSD (part of the denominator)

Domains	2022	2023	2024
Policies	Green	Light Green	Dark Green
Guidelines	Green	Light Green	Dark Green
Diversity	Light Green	Light Green	Light Green
Scale Up Plan	Orange	Light Green	Dark Green
Coordination	Orange	Light Green	Dark Green
Community	Light Green	Light Green	Dark Green
Training	Light Green	Light Green	Dark Green
M&E System	Light Green	Light Green	Orange
Procurement	Light Green	Light Green	Dark Green
Facility Coverage	Light Green	Yellow	Yellow
Client Coverage	Light Green	Light Green	Dark Green
AHD	Orange	Orange	Yellow
Key Populations	Red	Light Green	Orange
TB/HIV	Red	Red	Yellow
MCH	Red	Red	Orange
NCD/HIV	Grey	Yellow	Yellow
Family Planning	Orange	Orange	Orange
Quality	Orange	Red	Orange
Impact	Light Green	Light Green	Light Green

Tanzania Differentiated Treatment: Multi-month Dispensing 2022-2024



- The coverage for PLHIV on 6+ MMD improved from 59% in 2023 to 73% in 2024 due to:
 - Improved enhanced adherence counselling led to improved adherence and enrollment into 6+MMD
 - Availability of ART commodities

Tanzania AHD CMM Results – Trend over time 2022-2024

- Improvement in SOPs, Diagnostic capability 2, Client coverage 1 and 3, supply chain and M & E system
- Regression on 2 domains:
 - **Diagnostic capability 1**
 - ❖ ART sites increased to 7,805, from 7,072 while CTC facilities capable of assessing PLHIV for AHD by CD4 test only slightly increased from 3,572 to 3,659 Giving a HF coverage of 47% in 2024 down from 51% in 2023
 - **Impact**
 - ❖ Evaluation not yet done as the implementation of AHD services started in 2022

Domains	2022	2023	2024
Policies	Light Green	Medium Green	Dark Green
Guidelines	Medium Green	Medium Green	Dark Green
AHD Scale-up Plan	Orange	Orange	Orange
SOPs	Medium Green	Light Orange	Dark Green
Coordination	Medium Green	Medium Green	Dark Green
ROC Engagement	Light Orange	Medium Green	Dark Green
Training	Light Green	Medium Green	Light Green
Supply Chain	Yellow	Yellow	Dark Green
M&E System	Yellow	Medium Green	Dark Green
Diagnostic Capability 1	Yellow	Light Green	Yellow
Diagnostic Capability 2	Yellow	Red	Light Green
Facility Coverage	Medium Green	Yellow	Yellow
Client Coverage 1	Yellow	Red	Light Green
Client Coverage 2	Yellow	Red	Orange
Client Coverage 3	Light Green	Yellow	Dark Green
Client Coverage 4	Yellow	Medium Green	Light Green
Quality	Yellow	Yellow	Orange
Impact	Red	Light Green	Red

Tanzania AHD CMM 2024

Policies				
Guidelines				
SOPs				
Coordination				
ROC Engagement	Training			
Client Coverage 3	Diagnostic Capability 2		AHD Scale-up Plan	
Supply Chain	Client Coverage 1	Diagnostic Capability 1	Client Coverage 2	
M&E System	Client Coverage 4	Facility Coverage	Quality	Impact
Most mature				Least mature

- Improvement observed in Client Coverage 3, Client Coverage 2, Client Coverage 1, Diagnostic Capability 2, Supply Chain, and SOPs domains compared to 2023
- Regression noted in Diagnostic Capability 1 and Quality domains
- The Impact domain remains the least mature, due to absence of completed evaluations

Tanzania Differentiated Testing CMM – 2024

- Improvement observed in 11 out of 22 domains:
 - Enhanced understanding of the staging criteria and the CMM
 - Availability of resources to implement prioritized post-staging action plans
- Regression noted in 2 out of 22 domains:
 - Strategic Model Mix: The national dHTS guidelines have not been updated in the last five years
 - Community Engagement: Introduction of more rigorous staging criteria
- Most mature staging (light and dark green): Maintained in 7 out of 22 domains
- Least mature staging (yellow): Maintained in 2 out of 22 domains

Domains	2023	2024
Policy: Strategic Model Mix	Light Green	Red
Policy: Optimizing HIV Testing	Light Green	Yellow
Policy: Linkage	Light Green	Light Green
Finance/Resource Allocation	Light Green	Dark Green
SOPs	Light Green	Dark Green
Scale-up Plan	Light Green	Dark Green
Community Engagement	Light Green	Light Green
Private Sector Engagement	Light Green	Light Green
Coordination	Light Green	Dark Green
dHTS Training	Light Green	Dark Green
M&E	Light Green	Dark Green
Procurement/Supply Chain	Light Green	Dark Green
Population Coverage	Light Green	Light Green
Linkage to Tx: Timely Linkage	Light Green	Dark Green
Linkage to Tx: Verification	Light Green	Dark Green
Linkage to Prevention	Light Green	Dark Green
EQA/IQC	Yellow	Yellow
Proficiency Testing	Yellow	Yellow
Clinical Services	Red	Red
Impact: Knowledge of Status	Red	Red
Impact: Linkage to Tx	Red	Light Green
Impact: Linkage to Prevention	Red	Yellow

Overview of HIV Program 2024 CMM Results

- Most enabling domains are mature
- Least mature domains are Impact and Quality domains
- To achieve maturity, focus will be on the following domains
 - ❖ Policy; Strategic Model Mix and Optimizing HIV Testing
 - ❖ Clinical services
 - ❖ M & E System
- Plans to integrate outcomes domains:
 - ❖ Strengthened platforms that discuss Integration:
 - NCD - HIV integration TWG (Mar 2024)
 - FP - HIV integration committee

Tanzania

dHTS		DART		AHD	
Domains	2024	Domains	2024	Domains	2024
Policy: Strategic Model Mix	Red	Policies	Green	Policies	Green
Policy: Optimizing HIV Testing	Yellow	Guidelines	Green	Guidelines	Green
Policy: Linkage	Light Green	Diversity	Light Green	AHD Scale-up Plan	Orange
Finance/Resource Allocation	Green	Scale Up Plan	Green	SOPs	Green
SOPs	Green	Coordination	Green	Coordination	Green
Scale-up Plan	Green	Community Engagement	Green	ROC Engagement	Green
Community Engagement	Light Green	Training	Green	Training	Light Green
Private Sector Engagement	Light Green	M&E System	Orange	Supply Chain	Green
Coordination	Green	Procurement	Green	M&E System	Green
dHTS Training	Green	Facility Coverage	Yellow	Diagnostic Capability 1	Yellow
M&E	Green	Client Coverage	Green	Diagnostic Capability 2	Light Green
Procurement/Supply Chain	Green	AHD	Yellow	Facility Coverage	Yellow
Population Coverage	Light Green	Key Populations	Orange	Client Coverage 1	Light Green
Linkage to Tx: Timely Linkage	Green	TB/HIV	Yellow	Client Coverage 2	Orange
Linkage to Tx: Verification	Green	MCH	Orange	Client Coverage 3	Green
Linkage to Prevention	Green	NCD/HIV	Yellow	Client Coverage 4	Light Green
EQA/IQC	Yellow	Family Planning	Orange	Quality	Orange
Proficiency Testing	Yellow	Quality	Orange	Impact	Red
Clinical Services	Orange	Impact	Light Green		
Impact: Knowledge of Status	Orange				
Impact: Linkage to Tx	Light Green				
Impact: Linkage to Prevention	Yellow				

Outline

- **Where are we now?**

- Progress towards 95:95:95 targets
- Treatment: capability maturity model (CMM) self-staging results
- DART model mix and MMD
- AHD: CMM self-staging results
- dHTS: CMM self-staging results

- **How did we get here?**

- Stakeholder coordination and prioritization processes
- Engagement with CQUIN
- Update on Country Action Plans
- Update on Integrating Non-HIV and HIV Services
- Program sustainability efforts and opportunities
- Successes and Challenges
- **2025 Priorities**

Stakeholder coordination and prioritization processes

- DSD are coordinated by the DSDM Taskforce team which meets quarterly to review and discuss DSD implementation status in the country:
 - Includes representatives of the recipient of care organizations, specifically the National Council of People Living with HIV in Tanzania (NACOPHA)
 - The DSD task force formation was conceptualized at last year's CQUIN meeting:
 - MOH secured buy-in from PEPFAR and the Global Fund
 - Receives funding from PEPFAR and the Global Fund

DSD Performance Reviews

The second DPR in the country was conducted in 2024

- **Tool**-structured electronic tool - SURVEY CTO
- **Source documents**-Paper-based registers and EMR
- **Cohorts**: 12, 24, and 36 months
- **Data collection**: 2nd to 23rd, April 2024
- **Sample size**: 3,978 for Patient level records and 71 for health facilities

Selection Criteria:

- NASHCoP purposively selected CDC, USAID, DOD supported regions/facilities in consultation with agency staff
- Dispensary, Health Centre, Regional Referral Hospital and FBOs

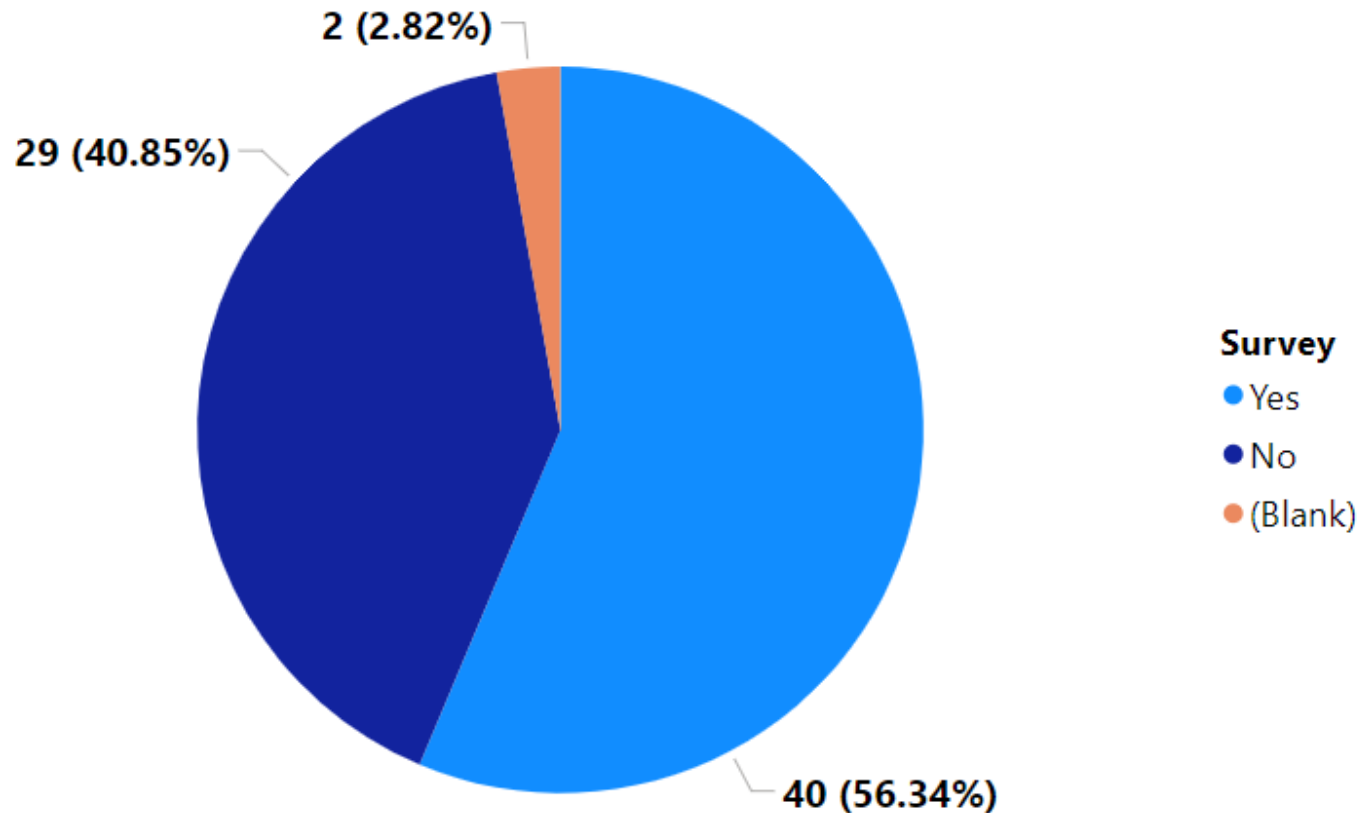
Regions/Facilities :

- Njombe - 18 facilities – USAID (DELLOITE)
- Mbeya - 26 facilities – DOD (HJFMRI)
- Mwanza -27 facilities – CDC (ICAP)

DSD Performance Reviews-2024

- The second DPR in the country was conducted in 2024
 - **Tool**-structured electronic tool - SURVEY CTO
 - **Source documents**-Paper-based registers and EMR
 - **Cohorts**: 12, 24, and 36 months
 - **Data collection**: April 2-23, 2024
 - **Sample size**: 3,978 patient-level records and 71 health facilities
- **Selection Criteria:**
 - NASHCoP purposively selected CDC, USAID, and DOD-supported regions/facilities in consultation with agency staff, including dispensaries, health centers, regional referral hospitals, and FBOs
- **Regions/Facilities: Njombe**: 18 facilities – USAID (DELLOITE); **Mbeya**: 26 facilities – DOD (HJFMRI) and **Mwanza**: 27 facilities – CDC (ICAP)

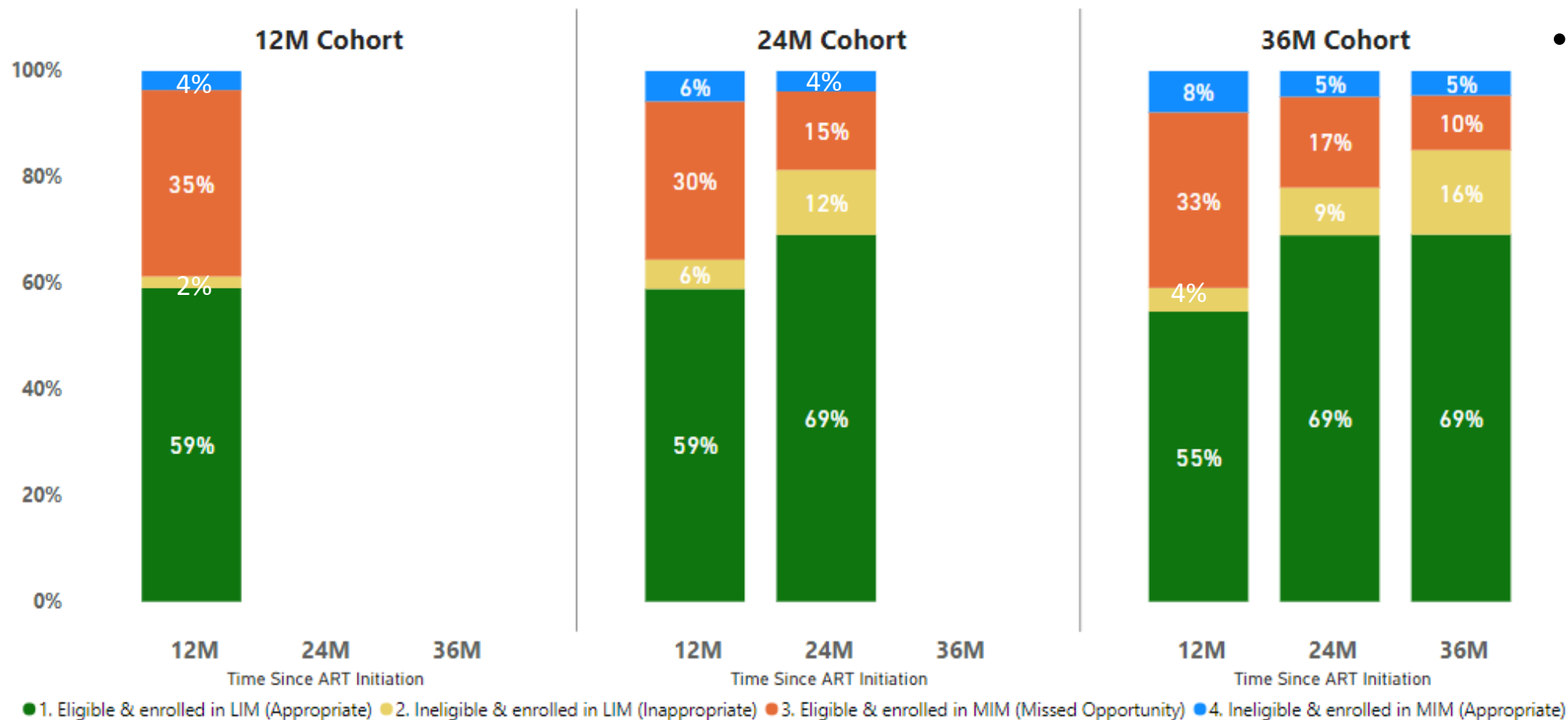
DSD Performance Reviews: Providers Satisfaction surveys



Client satisfaction surveys had been conducted in 56% of health facilities where DPR was conducted

DSD Performance Reviews: Main Findings

Patient-level data abstraction - Appropriateness/Fidelity

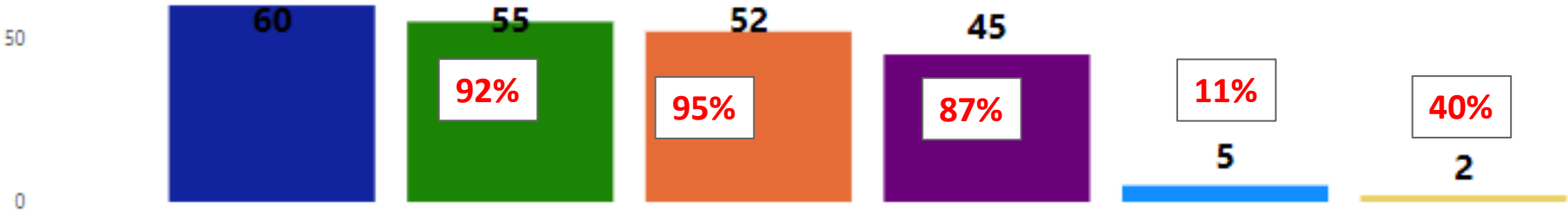


- Most RoCs are appropriately enrolled in (LIM), as evidenced by an increase in enrollment from **55%** in 2022 to **69%** in 2024 for the 36-month cohort

DPR: High Viral Load Cascade All cohorts by Time Point

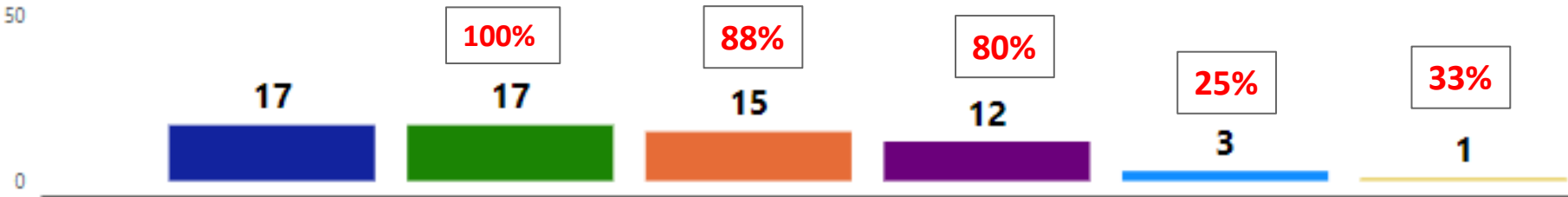
First 12 months after ART initiation all cohorts

2787
Total VL Results Available at 12M



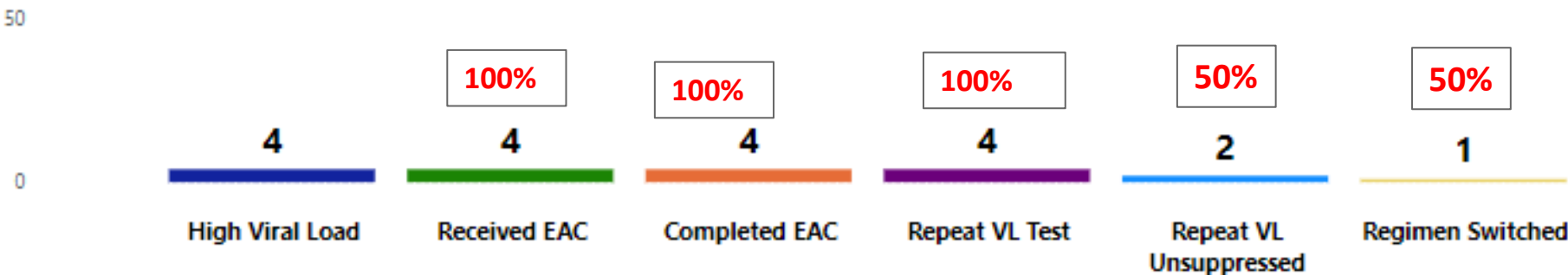
At 24 months after ART initiation all cohorts

1486
Total VL Results Available at 24M

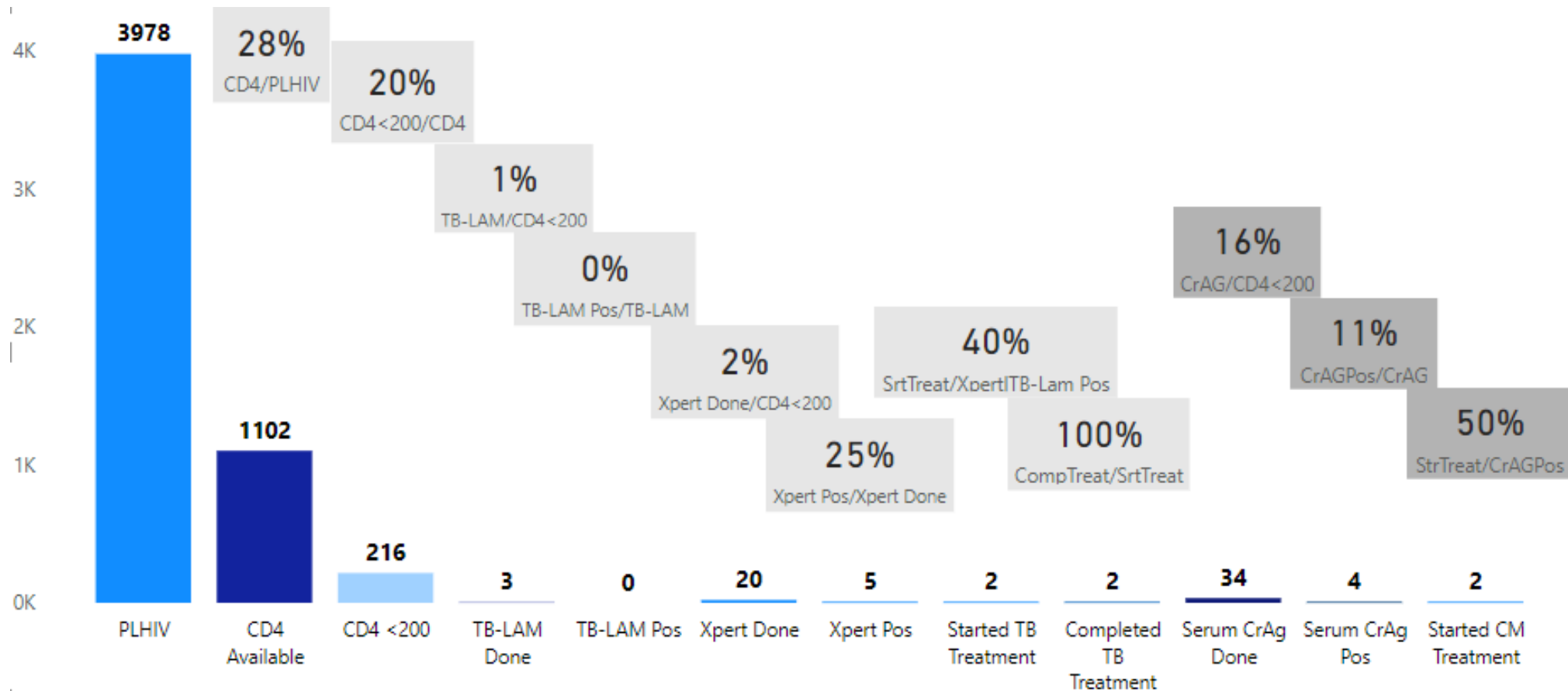


At 36 months after ART initiation all cohorts

628
Total VL Results Available at 36M



DPR: National AHD Cascade ART Initiation-All Cohorts



- For those with CD4 less than 200, 3 (1%) RoCs had a TB-LAM and 20 (2%) Xpert test done
- The two initiated on TB treatment, had 100% completion

Update on Country Action Plans from 2023 Meetings-1

- **Successfully completed activities include:**
 - Oriented Konga and group leaders on revised guidelines incorporating community ART
 - Engaged Konga and group leaders to sensitize RoC on community ART uptake
 - Assessed and accredited eligible health facilities to provide ART services
 - Finalized the AHD scale-up plan
 - Built capacity of HCWs in delivering Differentiated Service Delivery and AHD
 - Developed and disseminated AHD Standard Operating Procedures
 - Developed an AHD dashboard visualization within the CTC2/3 database
 - Transitioned to the provision of shorter TPT regimens
 - Scaled up Cryptococcal Meningitis (CM) prophylaxis to over 500 high-volume sites

Update on Country Action Plans from 2023 Meetings-2

- **Ongoing activities include:**
 - Rolling out point-of-care CD4 testing
 - Developing M&E systems for AHD indicators to capture the full cascade
 - Increasing the number of health facilities providing comprehensive management of AHD services
 - Disseminating new eligibility criteria for the less intensive model of DSD

Update on Integrating Non-HIV and HIV Services

- Ministry of Health has revised the National HIV guideline and has incorporated the Non- communicable diseases and Mental Health
- The Ministry has initiated the HIV and NCD integration TWG which coordinates the integration of HIV and NCD services in the country
- HIV and NCD TWG include members from the recipient of care organization representatives NACOPHA
- HIV and NCD integration indicators are incorporated into the CTC2 database

Program sustainability efforts and opportunities

- **Regarding the Sustainability plan**
 - The Ministry has initiated a DSD task force team for the Sustainability plan
 - Funding for the DSD task force team has been included in the country write-up for CDC and Global Fund

DSD Implementation Successes in 2024

- Inclusion of DSD activities in a country plans
- Existence of an active national DSD Task Force
- DPR implementation in three regions
- Orientation of HCWs on AHD
- Integration of HIV and non-HIV services e.g FP and HTN

Outline

- **Where are we now?**

- Progress towards 95:95:95 targets
- Treatment: capability maturity model (CMM) self-staging results
- DART model mix and MMD
- AHD: CMM self-staging results
- dHTS: CMM self-staging results

- **How did we get here?**

- Stakeholder coordination and prioritization processes
 - Engagement with CQUIN
 - Update on Country Action Plans
 - Update on Integrating Non-HIV and HIV Services
 - Program sustainability efforts and opportunities
 - Successes and Challenges
- **2025 Priorities**

DSD priorities for 2025

DSD-related goals and projections for 2025

- Commencement of DSD implementation in private pharmacies
- Scale up of comprehensive AHD services in District Hospitals

From other countries in the CQUIN network in the coming year, we wish to learn:

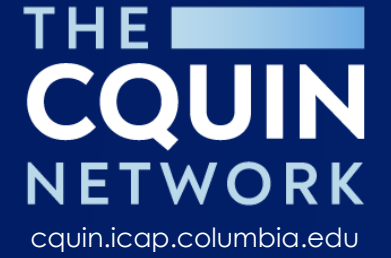
- Other LIM DSD model to improve ART access for RoCs

Acknowledgements

- MOH-NASHCoP
- NACOPHA
- PORALG
- PEPFAR
- Global Fund
- UN agency-UNICEF, WHO,UNAIDS
- Healthcare workers
- PLHIV Communities
- Implementing Partners

Come and see the beauty of Tanzania





Thank You!

