

Integrated Service Delivery: Framing Remarks

Dr Tendai Nyagura, Consultant



Session 17 Objectives

- To **highlight best practice** case studies of HIV/ non-HIV integration implementation from countries.
- To **highlight the remaining gaps and challenges** to achieve optimal integration
- To **frame some high-level asks** to global stakeholders that can support integration activities for network countries in the short-medium term

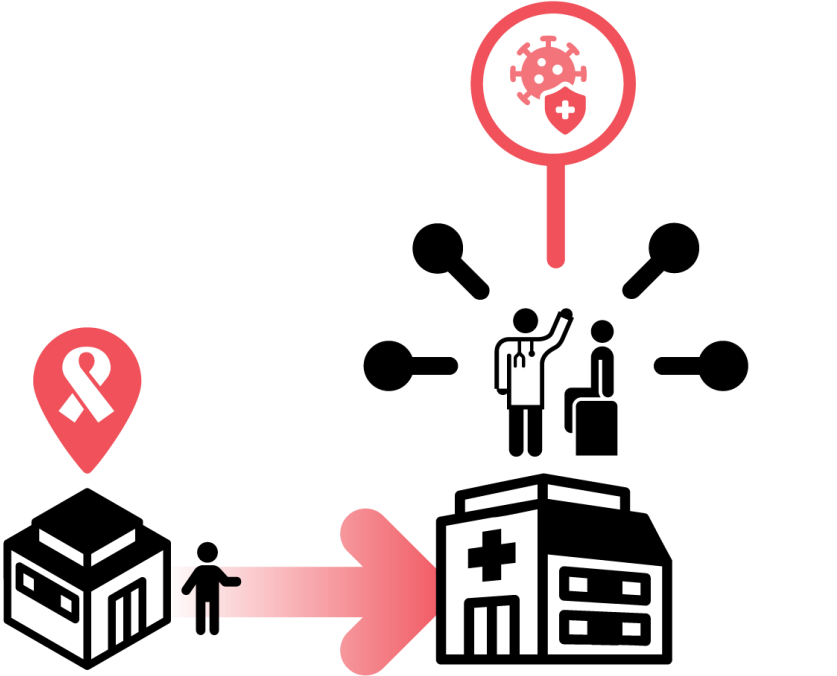
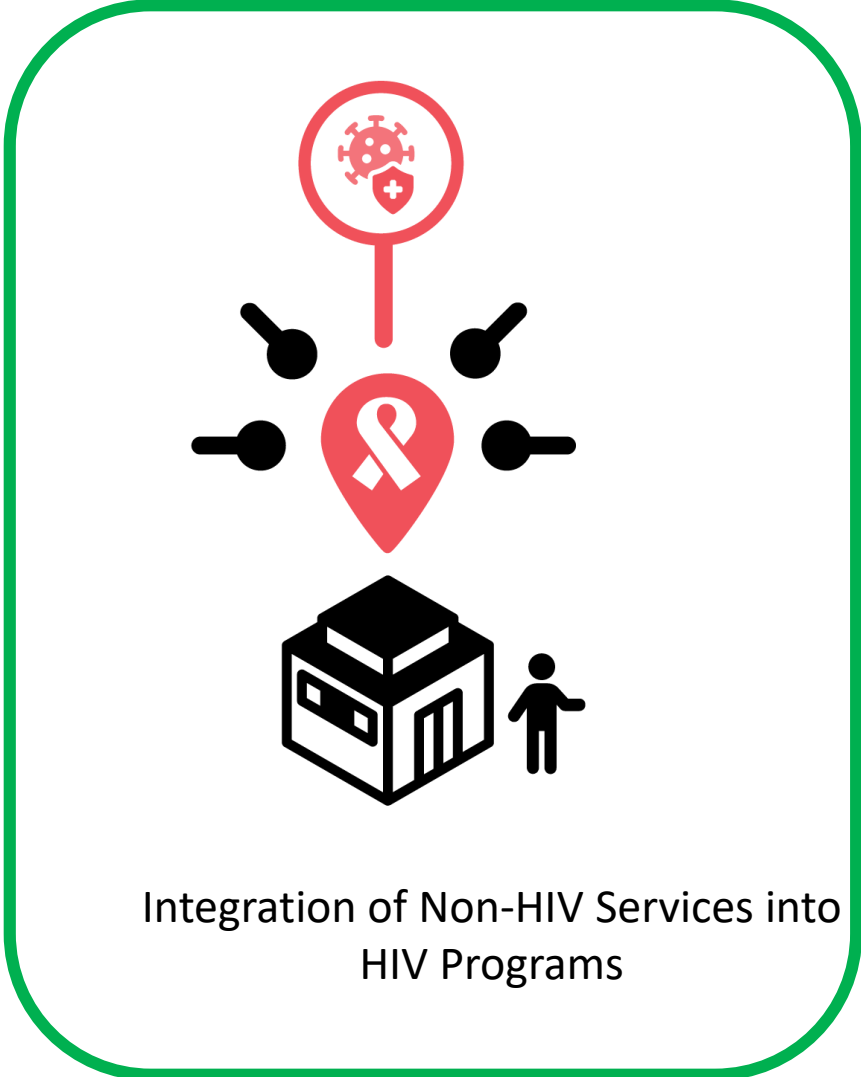


CQUIN's Support to Integration

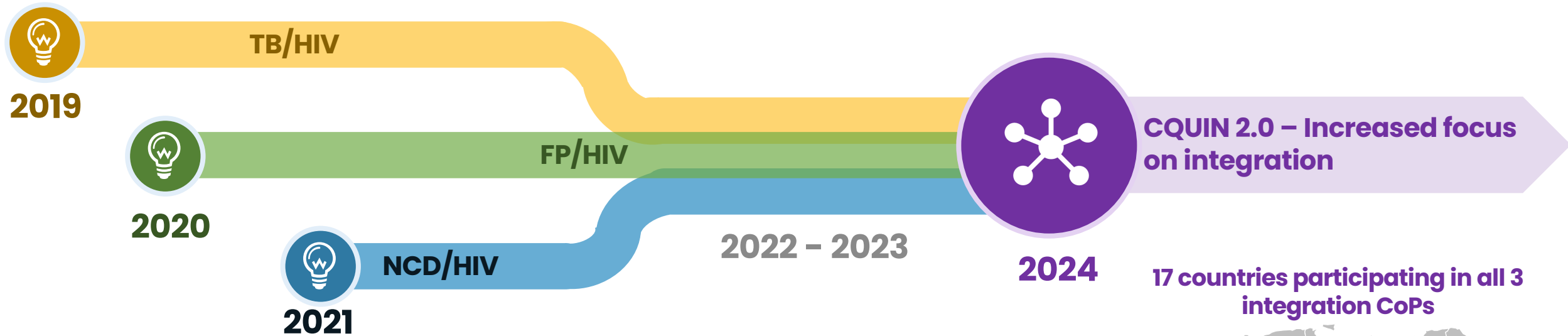
Reminder....Focus on Person-Centered Services



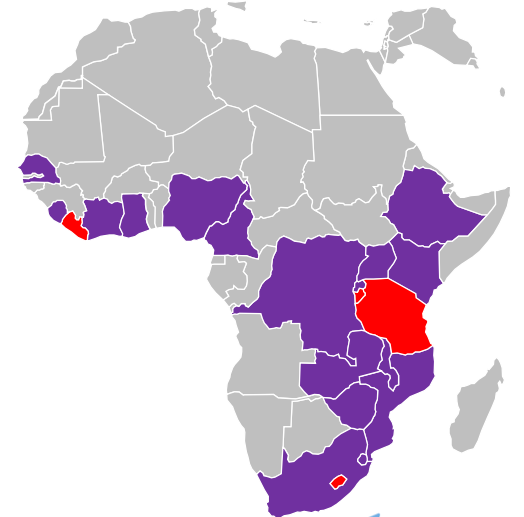
Direction of Integration



CQUIN CoPs Focused on Integration



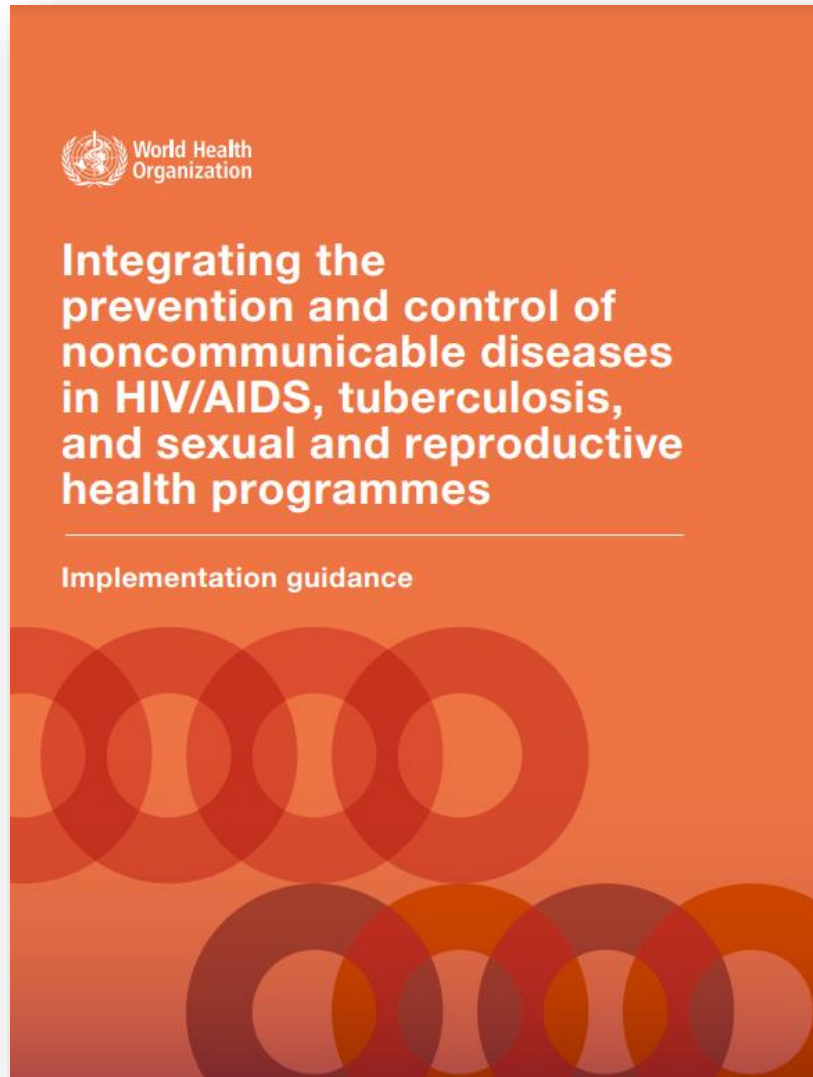
CQUIN’s focus on integration across these three program areas was determined from cross-cutting country priorities identified by CQUIN-member countries over the years



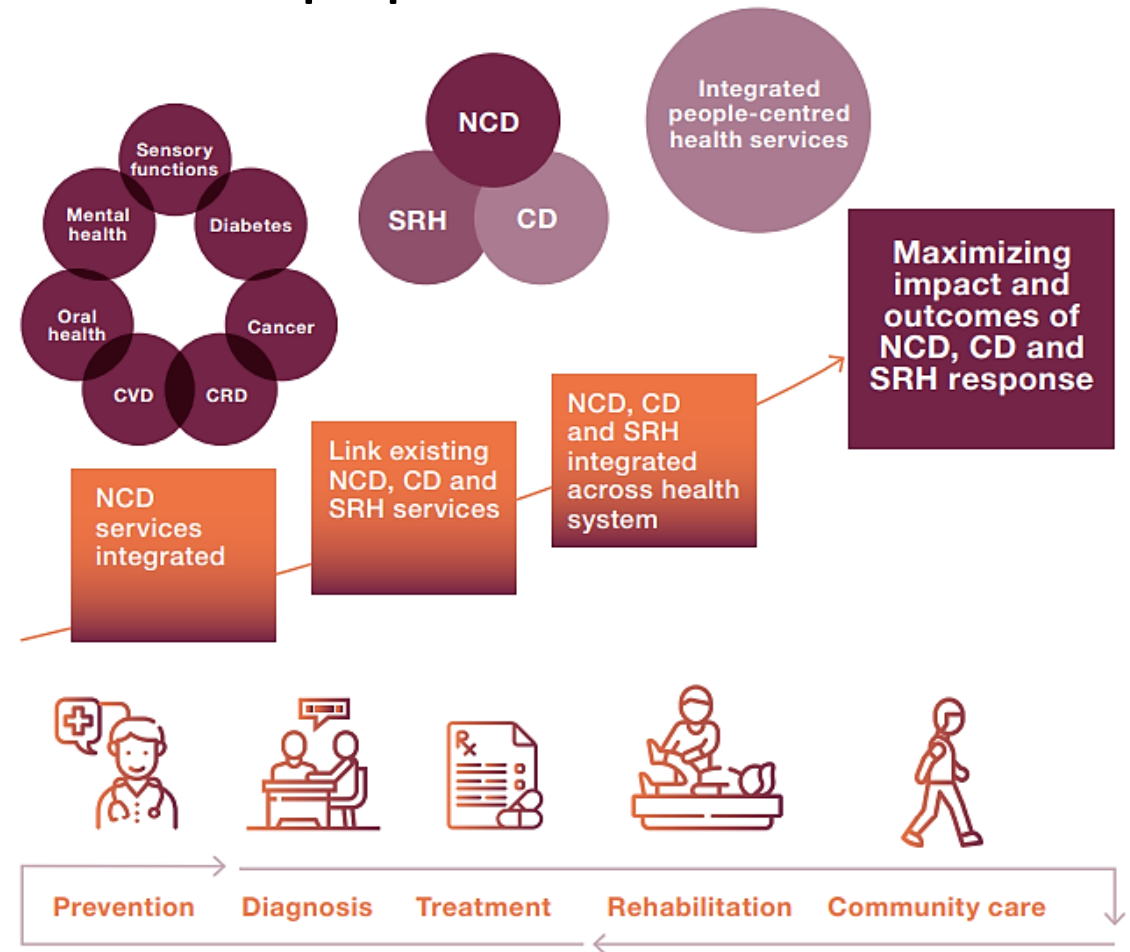


Some Global Initiatives and Guidelines Supporting Integrated Service Delivery

Integration Framework



Continuum of integration of noncommunicable diseases into people-centered health services



CD, communicable disease; CRD, chronic respiratory disease; CVD, cardiovascular disease; NCD, noncommunicable diseases; SRH, sexual and reproductive health.

Integrating the prevention and control of noncommunicable diseases in HIV/AIDS, tuberculosis, and sexual and reproductive health programmes: implementation guidance. Geneva: World Health Organization; 2023. Licence: CC BY-NC-SA 3.0 IGO.

WHO TB/HIV Guidelines and TB/HIV Accelerator Plans

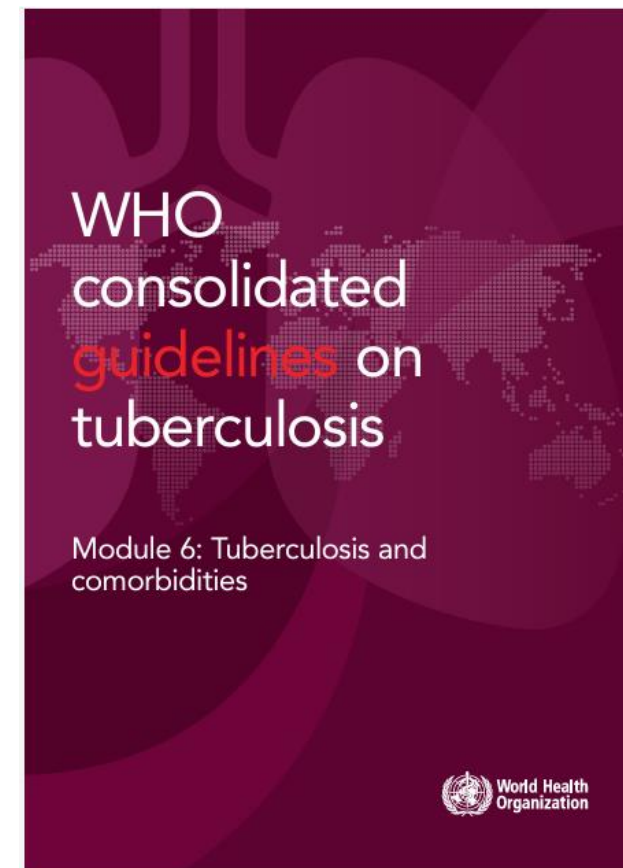


At the UN General Assembly High Level Meeting on TB, PEPFAR Global Health Security Diplomacy (GHSD) committed to detecting 2 million TB cases and prevent 500,000 TB-related deaths among PLHIV by December 2027.

The TAP is a 5-year strategy aimed at enhancing TB case finding in PLHIV, reducing TB-related morbidity and mortality, and contributing to achieving the End TB Strategy Goals by 2030.



Health Minister Joe Phaahla addresses members at the UN General Assembly in New York City on Thursday.



Latest WHO Hypertension Guidelines Enable Better Integration Even Within DSD Models

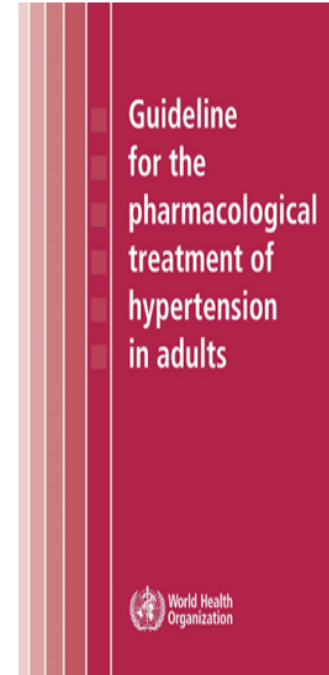
Enablers for DSD for ART and HTN treatment

| ENABLERS | HIV | Hypertension |
|--|---|---|
| Non- toxic regimen | TDF and DTG | Amlodipine +ARB (no cough, ok without monitoring if not available) |
| Simplified clinical guidance | One preferred first line for all | Algorithm with named preferred agents and titration steps (WHO 2021) |
| Effective regimen enabling faster time to control | DTG | Amlodipine/ARB |
| FDC | One pill once a day Simplified supply chain and reduces stock outs | FDC of ARB telmisartan and amlodipine |
| Clinical monitoring tool to determine established on treatment | VL | BP |

CQUIN Integrating non-HIV Services into HIV Programs Meeting | April 15-18, 2024



Guideline for pharmacological treatment of hypertension in adults, 2021



Includes recommendations on:

1. Blood pressure threshold for initiation of pharmacological treatment
2. Laboratory testing
3. CVD risk assessment
4. Drug classes to be used as first-line agents
5. Combination therapy
6. Target blood pressure
7. Frequency of assessment
8. Treatment by nonphysician professionals

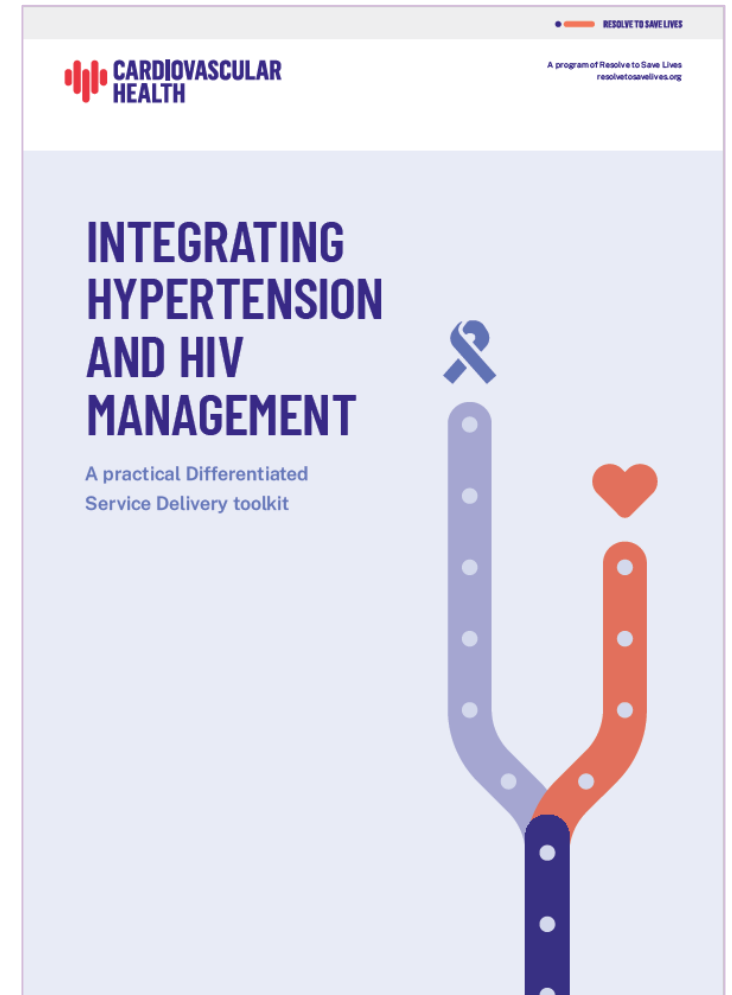
CQUIN Integrating non-HIV Services into HIV Programs Meeting | April 15-18, 2024



HIV-HTN DIFFERENTIATED SERVICE DELIVERY INTEGRATION TOOLKIT

HIV-HTN integration toolkit

- An overview of the general principles of DSD for chronic disease management.
- Guidance on how hypertension management can be integrated into DSD models for ART.
- Case studies and examples of how hypertension management has been integrated into DSD models for ART.
- Adaptable implementation tools developed for DSD and HIV-hypertension service integration programs



Global Guidance Updates: NCD DSD Integration 2024 Decision Framework Supplement: Chronic Conditions

Differentiated service delivery for chronic conditions

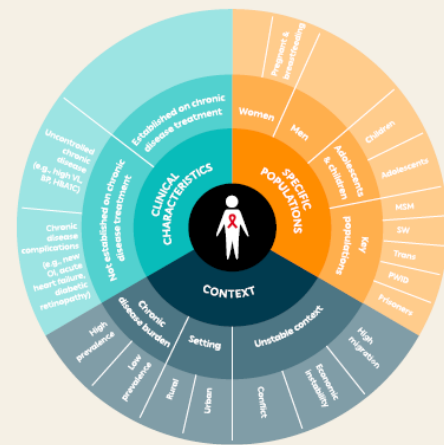
A supplement to *A Decision Framework for antiretroviral therapy delivery*



- An overview of why DSD is needed beyond HIV
- The key enablers for DSD for chronic conditions
- Examples of how the building blocks of DSD can be used for chronic conditions
- Examples of how service delivery for chronic conditions may be integrated

Example of use of DSD building blocks across the hypertension care cascade

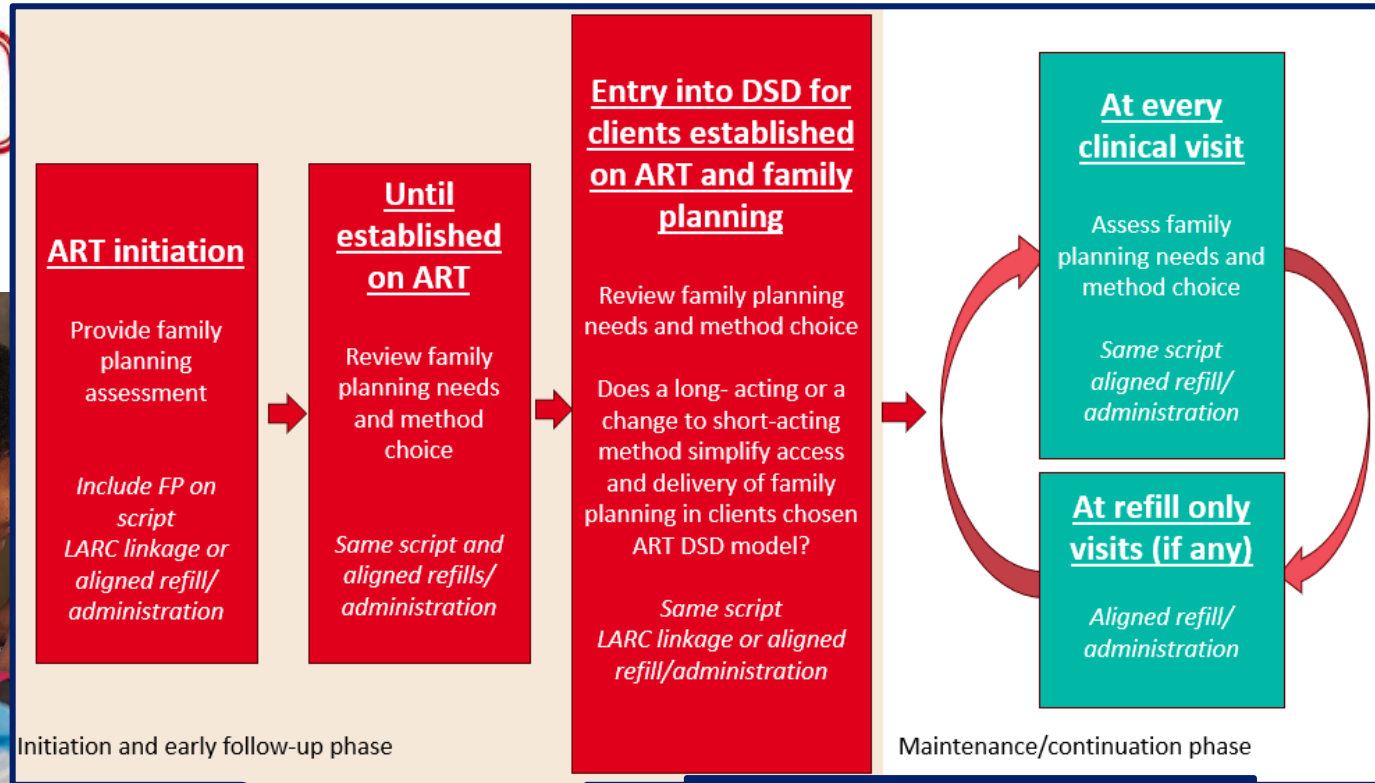
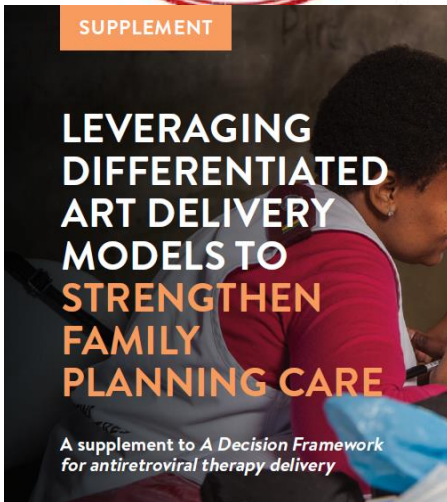
| | Diagnosis | Initiation | Titration | Continuation for those established on treatment |
|-------|---|---|---|---|
| WHEN | For people living with HIV at initiation, entry into DSD or at each annual clinical visit General population according to risk criteria (e.g., age, body mass index) | For people living with HIV at initiation, entry into DSD or at each annual clinical visit General population at time diagnosis is made | Monthly visits until blood pressure is controlled | Six-monthly clinical visits Three-monthly refills |
| WHERE | Outpatient department (OPD) at hospital Primary care Community | OPD at hospital Primary care For people living with HIV, same clinic as ART | OPD at hospital Primary care For people living with HIV, same clinic as ART | OPD at hospital Primary care For people living with HIV, same clinic as ART |
| WHO | Doctor, nurse, community health worker (CHW) | Doctor, nurse For people living with HIV, same healthcare worker (HCW) who provides ART | Doctor, nurse For people living with HIV, same HCW who provides ART | Doctor, nurse (clinical visit and refill visits); CHW, peers (refill visits) For people living with HIV, same HCW who provides ART |



Available [here](https://www.differentiatedservicedelivery.org)
www.differentiatedservicedelivery.org

Global Guidance Updates: Family Planning

2025 Decision Framework Supplement: DSD for Family Planning



Update to include:

- FP DSD (not only integration)
- Revised WHO FP and integration guidance
- Account for increasing self-care methods
- Integrating FP and PrEP DSD

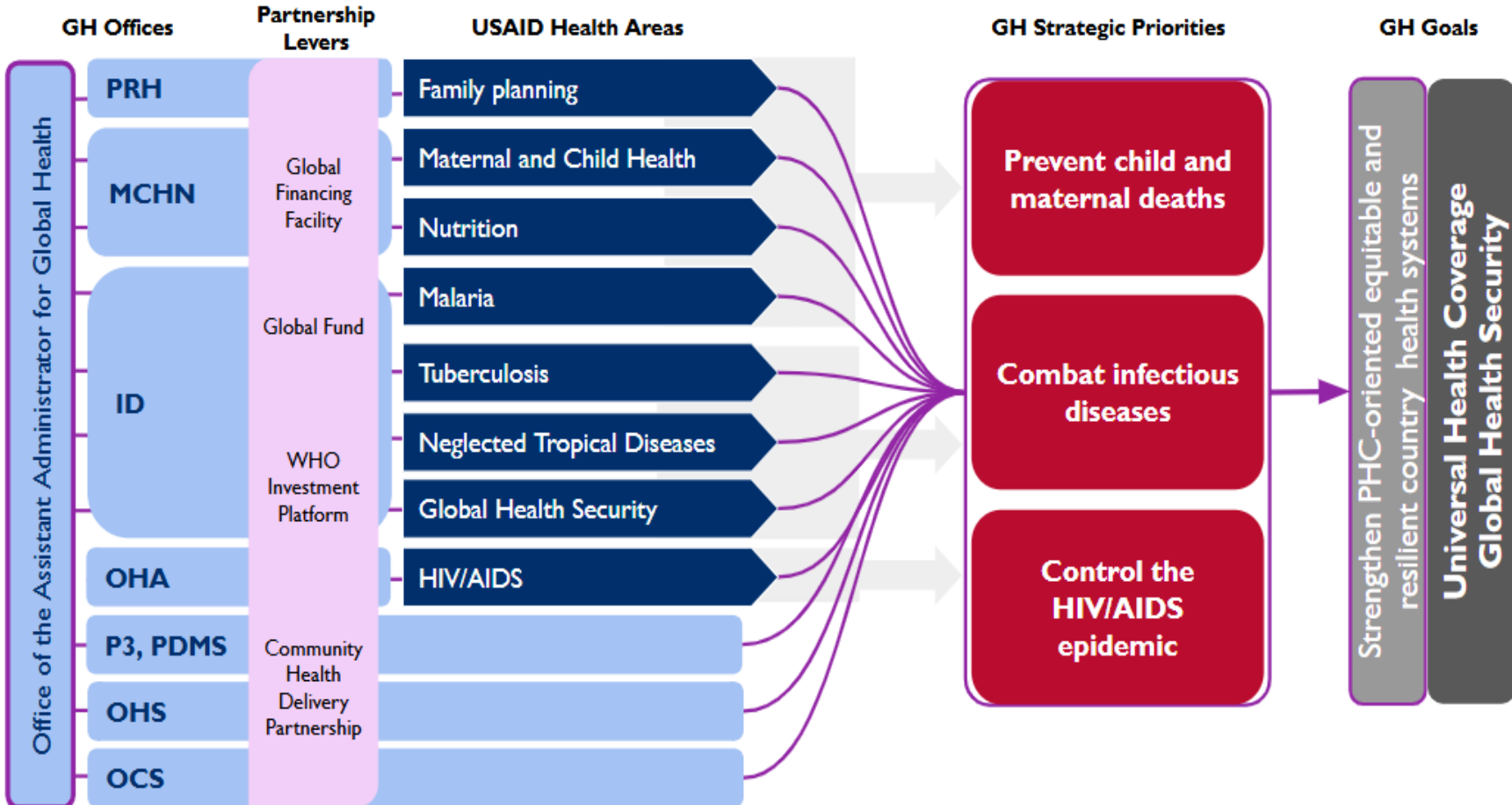
2018 version available [here](http://www.differentiatedservicedelivery.org)
www.differentiatedservicedelivery.org

2024 CQUIN
integration meeting
presentation [here](#)

**UPDATED VERSION:
EXPECTED BY MARCH 2025**

USAID's "Primary Impact" Efforts

Primary Health Care at USAID



— PHC efforts

- USAID is taking a deliberate approach across all the health areas we support to **better coordinate across disease areas** and strengthen service delivery for those core strategic priorities at the PHC level
- This involves better **integration at service delivery points**, and creating stronger, more **integrated health systems**.



Where Are Our Challenges ?

Shared Themes Emerging From the CQUIN Integration Program Areas - 2023

[TB/HIV, FP/HIV and NCD/HIV Integration]

Integrated service delivery

- Limited implementation guidance, SOPs, HCW training, performance indicators in support of service integration, and supply of commodities, medicines

Data for Decision Making

- Vertical HIV and non-HIV M&E systems
- Lack of integration M&E framework with targets and coverage data

Coordination

- Limited supportive policies
- Siloed funding and decision-making
- Limited national coordination mechanisms

Recipient of Care Engagement

- Limited awareness of the need and benefits of integrated programs
- Limited inclusion of integration into community-led monitoring programs



CQUIN CMM Integration Domains: Country Staging and Prioritization

FP/HIV Integration

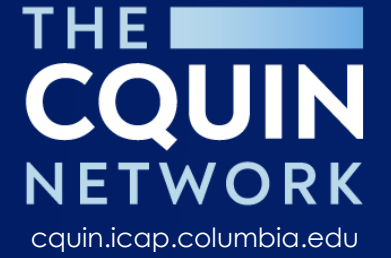
| Country | 2023 Score | 2024 Projected Score | 2024 Score |
|---------------|------------|----------------------|------------|
| Burundi | Red | Yellow | Yellow |
| Cameroon | Orange | Yellow | Orange |
| Cote d'Ivoire | Red | Yellow | Orange |
| DR Congo | Orange | Yellow | Green |
| Eswatini | Orange | Yellow | Orange |
| Ethiopia | Yellow | Green | Green |
| Ghana | Orange | Yellow | Orange |
| Kenya | Orange | Yellow | Orange |
| Lesotho | Orange | Grey | Orange |
| Liberia | Orange | Yellow | Orange |
| Malawi | Orange | Yellow | Orange |
| Mozambique | Red | Orange | Red |
| Nigeria | Orange | Orange | Orange |
| Rwanda | Orange | Green | Orange |
| Senegal | Orange | Yellow | Red |
| Sierra Leone | Orange | Grey | Orange |
| South Africa | Orange | Yellow | Orange |
| Tanzania | Orange | Grey | Orange |
| Uganda | Orange | Green | Green |
| Zambia | Orange | Yellow | Orange |
| Zimbabwe | Orange | Yellow | Orange |

TB/HIV Integration

| Country | 2023 Score | 2024 Projected Score | 2024 Score |
|---------------|------------|----------------------|------------|
| Burundi | Green | Dark Green | Dark Green |
| Cameroon | Yellow | Green | Orange |
| Cote d'Ivoire | Yellow | Green | Yellow |
| DR Congo | Orange | Yellow | Green |
| Eswatini | Yellow | Grey | Yellow |
| Ethiopia | Yellow | Yellow | Yellow |
| Ghana | Red | Grey | Red |
| Kenya | Yellow | Grey | Green |
| Lesotho | Green | Grey | Green |
| Liberia | Red | Orange | Yellow |
| Malawi | Orange | Green | Yellow |
| Mozambique | Dark Green | Grey | Yellow |
| Nigeria | Dark Green | Grey | Green |
| Rwanda | Yellow | Dark Green | Green |
| Senegal | Yellow | Yellow | Yellow |
| Sierra Leone | Yellow | Grey | Yellow |
| South Africa | Yellow | Green | Yellow |
| Tanzania | Red | Dark Green | Yellow |
| Uganda | Yellow | Green | Yellow |
| Zambia | Green | Dark Green | Yellow |
| Zimbabwe | Yellow | Green | Yellow |

NCD/HIV Integration

| Country | 2023 Score | 2024 Projected Score | 2024 Score |
|---------------|------------|----------------------|------------|
| Burundi | Red | Yellow | Red |
| Cameroon | Yellow | Green | Yellow |
| Cote d'Ivoire | Red | Orange | Orange |
| DR Congo | Orange | Yellow | Red |
| Eswatini | Yellow | Yellow | Yellow |
| Ethiopia | Yellow | Yellow | Yellow |
| Ghana | Yellow | Grey | Yellow |
| Kenya | Yellow | Grey | Yellow |
| Lesotho | Red | Yellow | Yellow |
| Liberia | Red | Orange | Yellow |
| Malawi | Orange | Yellow | Yellow |
| Mozambique | Red | Orange | Red |
| Nigeria | Yellow | Yellow | Yellow |
| Rwanda | Red | Yellow | Red |
| Senegal | Red | Orange | Red |
| Sierra Leone | Yellow | Grey | Orange |
| South Africa | Yellow | Green | Red |
| Tanzania | Yellow | Green | Yellow |
| Uganda | Yellow | Green | Yellow |
| Zambia | Yellow | Green | Yellow |
| Zimbabwe | Yellow | Grey | Yellow |



Thank You!

