



**Global Health Security
and Diplomacy**
U.S. DEPARTMENT *of* STATE



PEPFAR
U.S. President's Emergency Plan for AIDS Relief

Sustainable Person-Centered Services for PLHIV

Ritu Pati, MD, MPH

Senior Advisor, HIV Treatment and Clinical Integration

Session 2 of CQUIN Annual Meeting

December 10, 2024

To advance towards Sustainability, we must **be Bold and have the Courage to follow through**

FUTURE STATE GOAL – 2030 and Beyond

The large majority of HIV prevention, care and treatment programs will be led and delivered by government OR delivered by other domestic entities with community engagement and government accountability

PEPFAR, alongside communities and other partners, will have a **central role** in advancing this goal



PEPFAR is advancing all 4 lanes of **SUSTAINABILITY** for 2030 and beyond

Political

Continuous commitment from governments that achieving 2030 goals and maintaining gains beyond 2030 is a major security, development and health priority

Programmatic

HIV epidemic under control with capable country-led systems and institutions in place to deliver impactful and equitable HIV prevention and treatment services

Financial

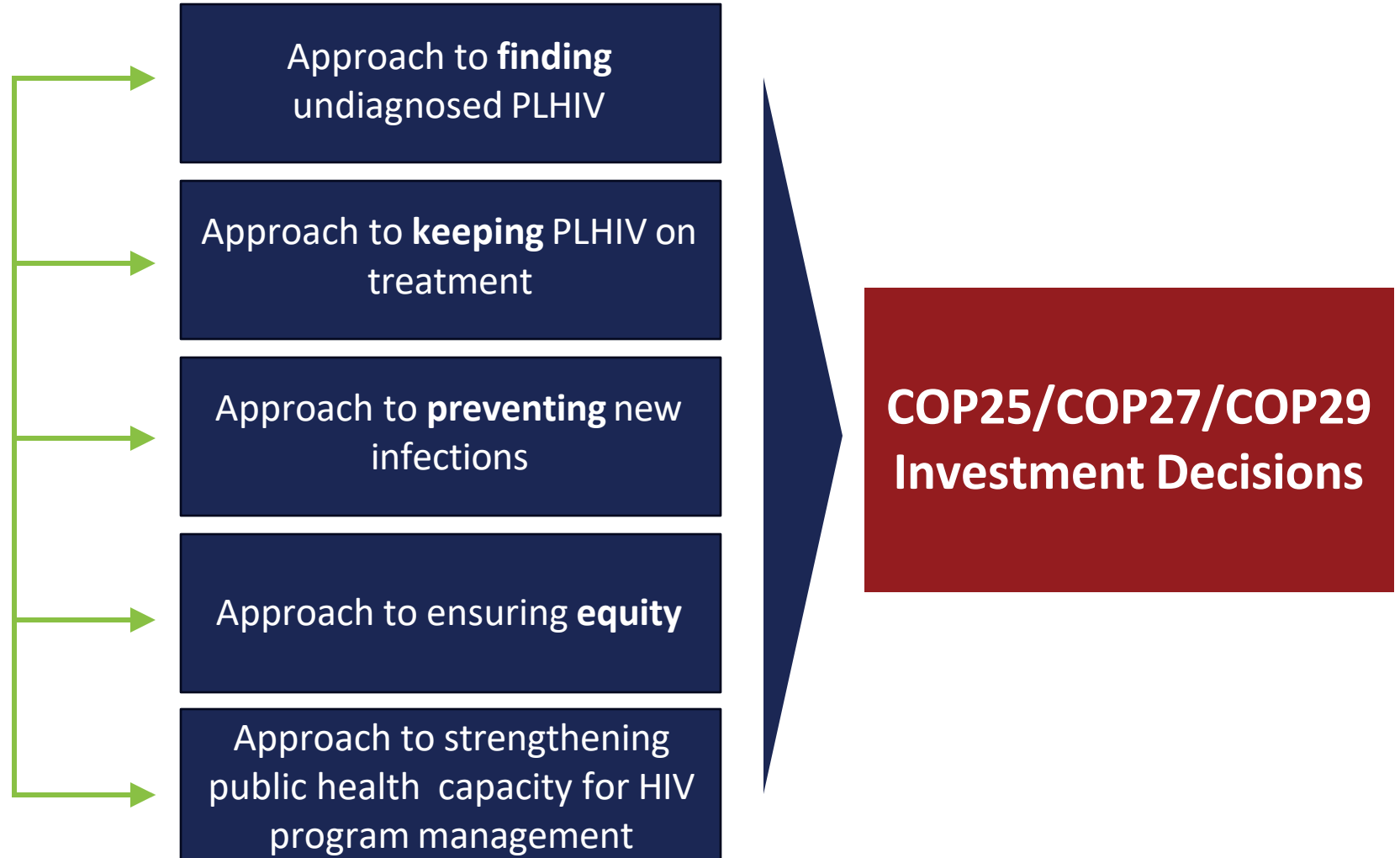
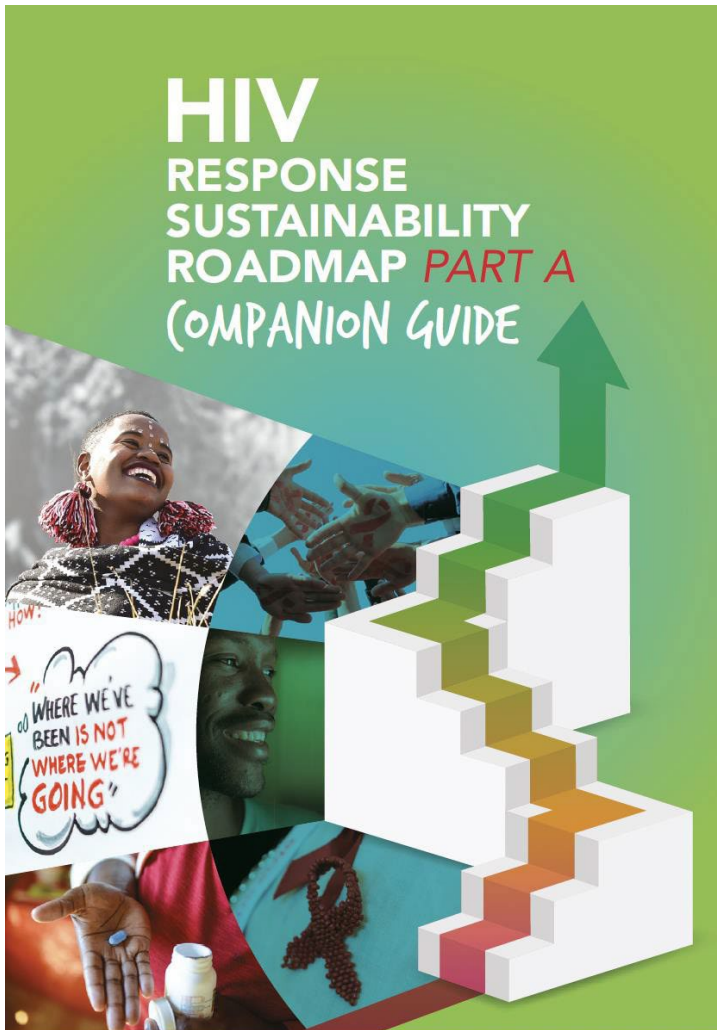
Increased share of the financial resources required for the HIV response **from domestic sources** rather than international donors

Partnership

Greater mobilization of support from non-traditional HIV entities (i.e., development banks, private sector, etc.) to advance HIV outcomes



Meaningful Country-Led Roadmaps Matter: PEPFAR investments, operations in COP25 will be informed by vision presented in Sustainability Roadmaps



What will it take?

Components for the Future of HIV Service Delivery

Simplification

Standardization of implementing partner support to common nationally defined models

Differentiation

Tailor the intensity of interventions based on epidemiological makers of HIV outcomes and equity gaps

Innovation & Science

Translate evidence-based insights to scale (e.g., reducing HIV incidence through the introduction of long-acting PrEP)

Integration

Integrate HIV services with other health services to provide person-centered care and improve outcomes for PLHIV

